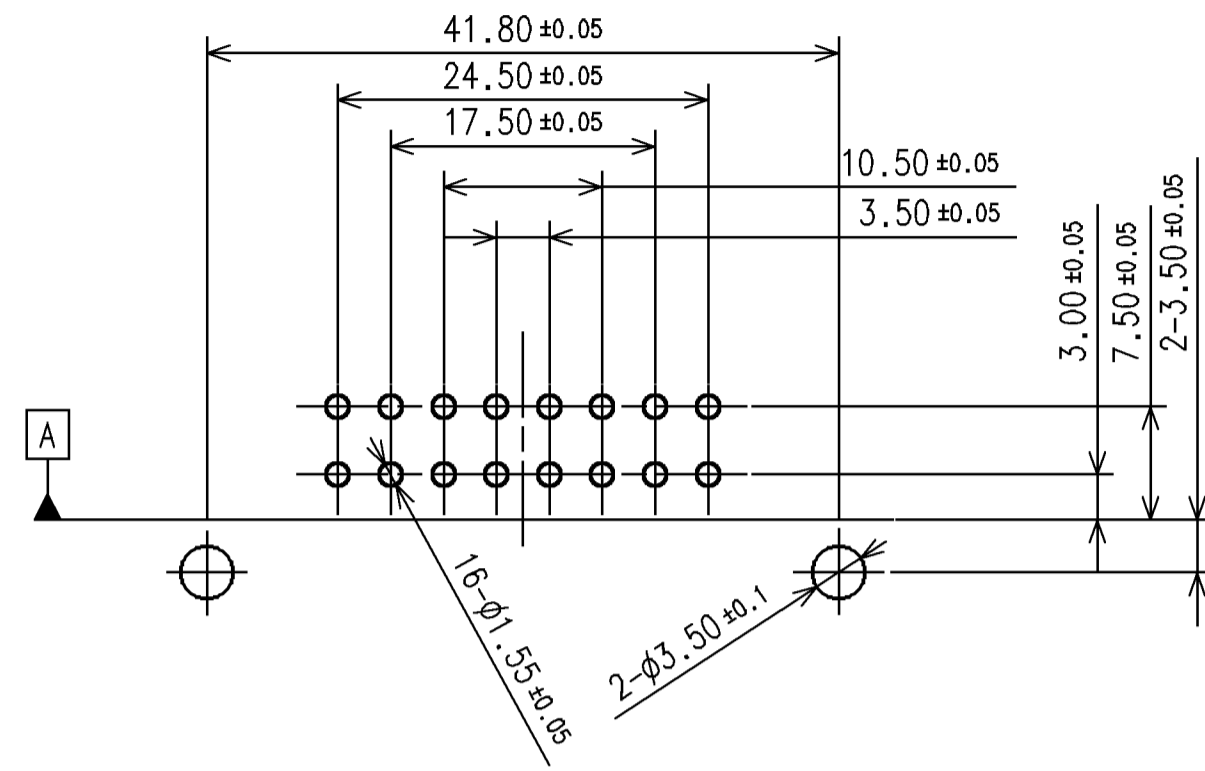
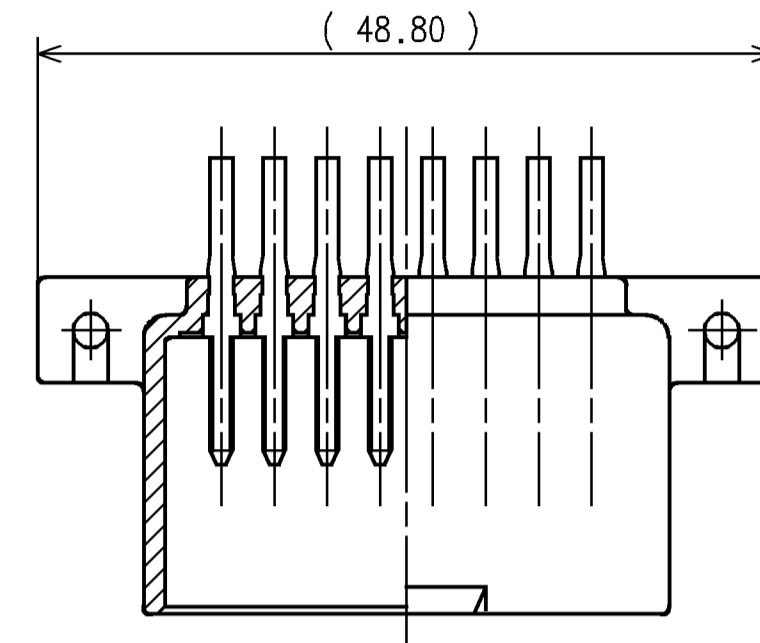


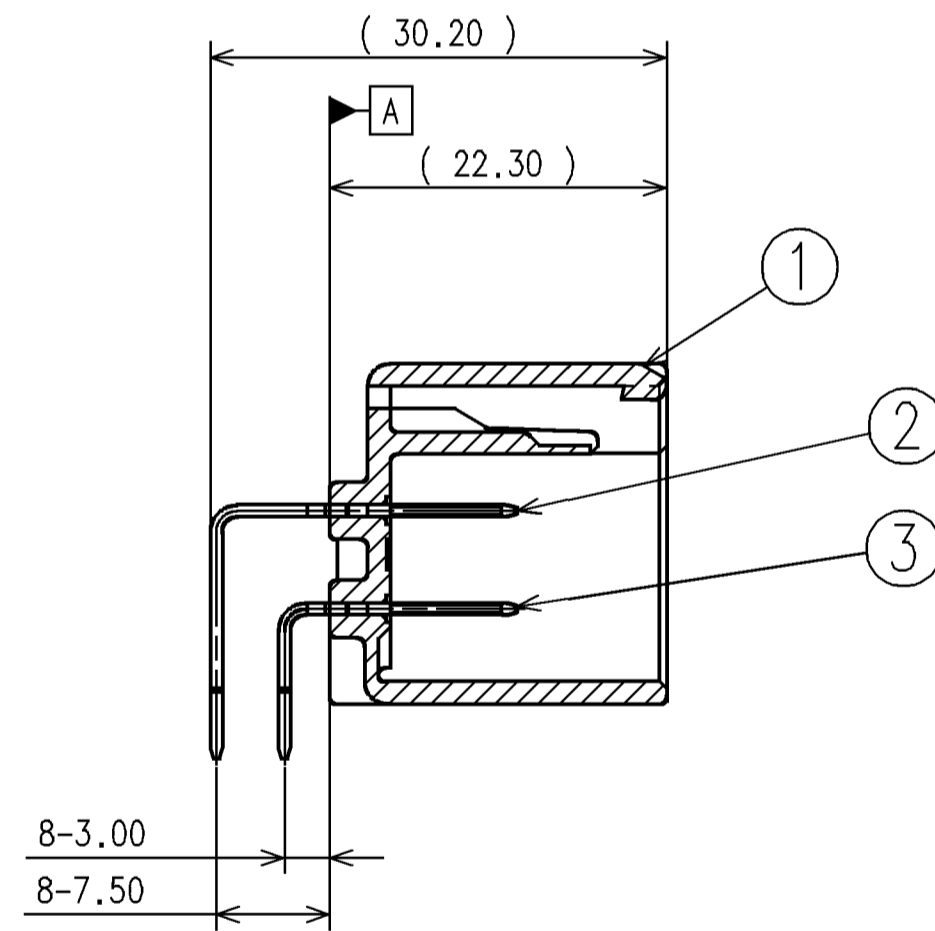
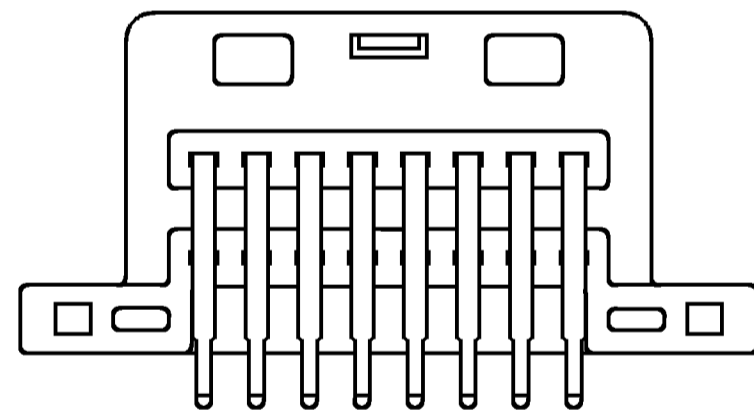
ASSY. PART NUMBER	NO.	PART NUMBER	PART NAME	MATERIAL	QUANTITY
7386-5567-6R	①	7186-5567-60	16P 1.5 UNSEALED MALE PCB HEADER HOUSING (H)	PPA+GF	1
	②	7114-4170-R2	1.5 PCB HORIZONTAL TERMINAL	BRASS	8
	③	7114-4171-R2	1.5 PCB HORIZONTAL TERMINAL	BRASS	8



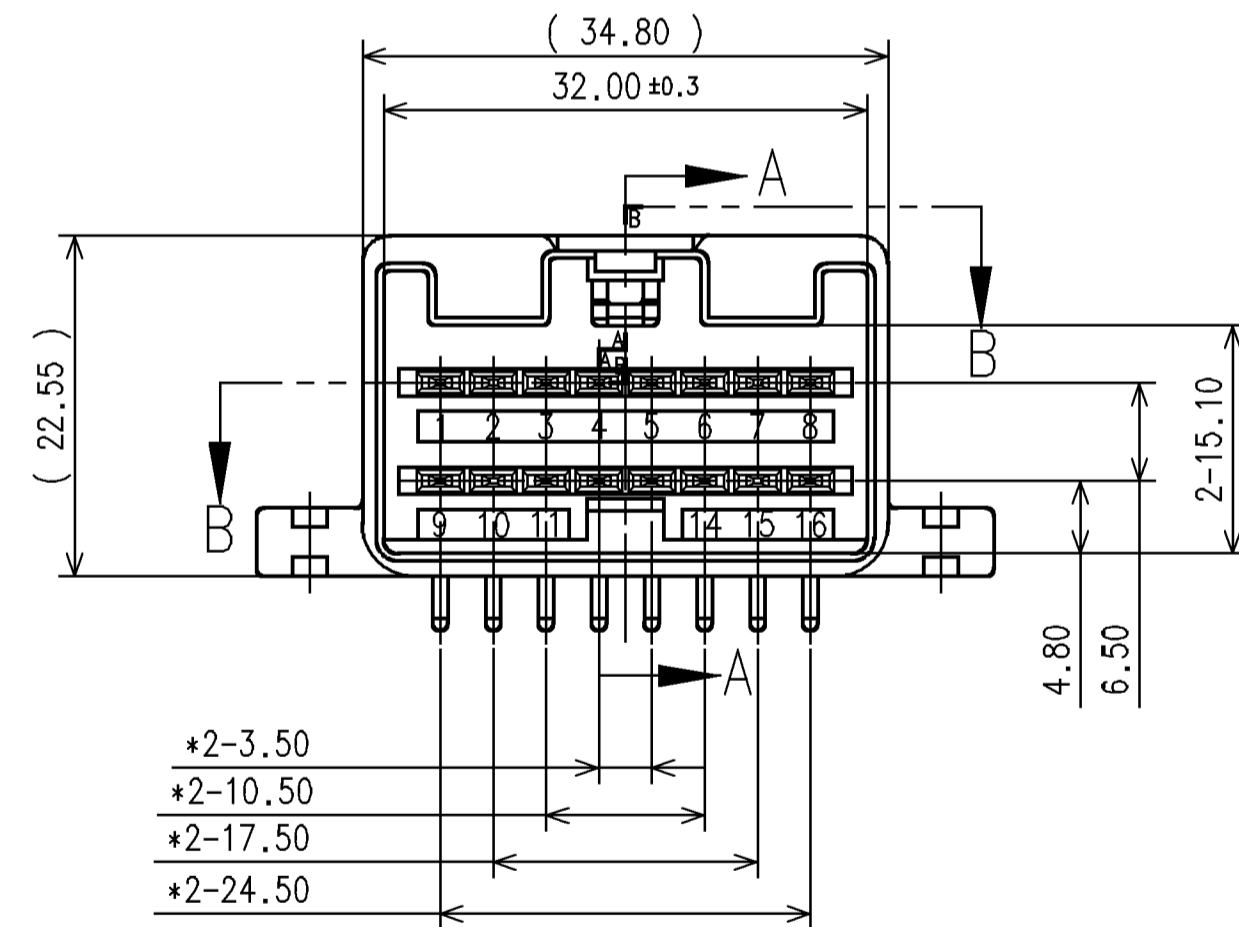
FOOTPRINT REQUIREMENT REFERENCE



SECTION B-B



SECTION A-A



- NOTES:
- PARTS MUST BE PURCHASED FROM YAZAKI.
  - PARTS MUST BE FREE FROM FLASH AND IMPERFECTION THAT AFFECT FUNCTION.
  - MATING PART NUMBER: 7283-6453-60 OR EQUIVALENT.
  - AFTER BEING PRESSED IN, THE TERMINALS MUST BE FREE OF PLASTIC RESIN.
  - THE TERMINALS MUST NOT BE LOOSE AFTER BEING INSERTED UNDER PRESSURE.
  - RECOMMENDED FASTENING TAPPING SCREW PER JIS B1122 & B1007: M3XL6 PANHEAD SECOND CLASS.
  - RECOMMENDED TIGHTENING TORQUE FOR SCREW ASSEMBLY: 0.65Nm~0.80Nm.
  - PART DESIGNED TO SATISFY USCAR-2, REVISION 5, NOVEMBER 2007, CLASS 2.
  - PART TO COMPLY WITH YPES-31-038 REQUIREMENTS.
  - \* DIMENSIONS ARE TO BE MEASURED AT THE INTERFACE AND AT THE SOLDER TAIL.
  - THIS DRAWING IS TO BE USED FOR INTERNAL YAZAKI PSW SUBMISSION.

GENERAL TOLERANCE							
	10 MAX	50 MAX	100 MAX	250 MAX	250 OVR	ANGLE	ECCENT
A	± 0.15	± 0.2	± 0.3	± 0.5	± 0.75	± 30'	0.1
B	± 0.2	± 0.3	± 0.55	± 0.95	± 1.4	± 30'	0.1
Ⓞ	± 0.3	± 0.5	± 0.8	± 1.4	± 2	± 30'	0.15
SPECIFIED						MASS	g

CUSTOMER		MATL. SPEC.	TREAT & FIN.	ISSUE MARK
CUSTOMER PART NO.	CUSTOMER DWG NO.	SEE TABLE	N/A	
OFFICE YNA	TRIAL PART NO.	NAME 16P 1.5 UNSEALED MALE PCB HEADER ASSEMBLY (H) LEAD-FREE COMPLIANT		
VENDOR	VENDOR NO.	PART NO. 7386-5567-6R		
		CH. CODE 7386-5567-6R:R		SET DWG NO.
		DWG NO. 7386-5567-6R:R		
		YAZAKI CORPORATION		

LET	DATE	REVISION RECORD	C11-A372 NO.	MMR	CHKD
-	04-27-2011	NEW	C11-A372	MMR	

# Mouser Electronics

Authorized Distributor

Click to View Pricing, Inventory, Delivery & Lifecycle Information:

[Yazaki:](#)

[738655676R](#)