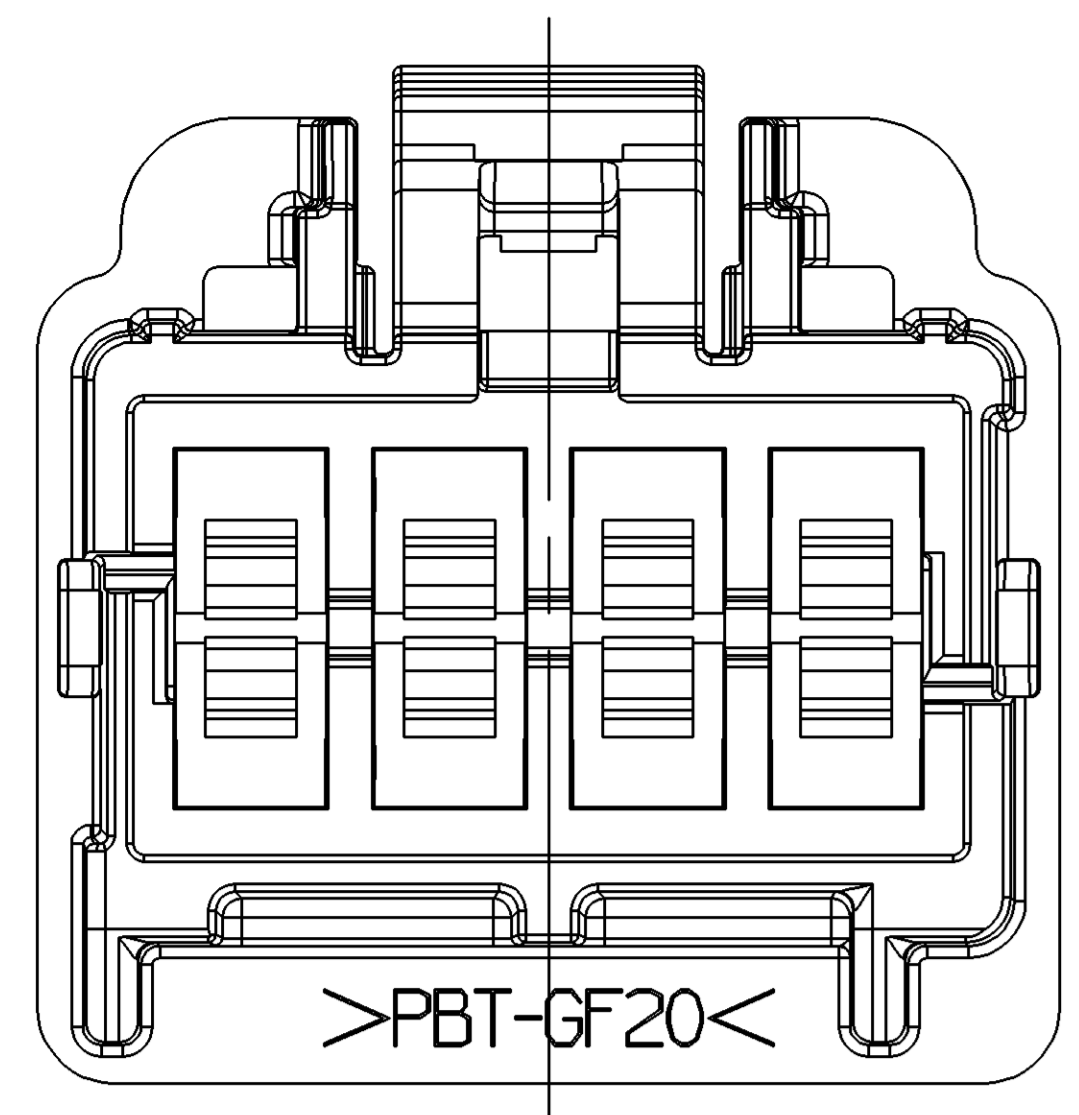
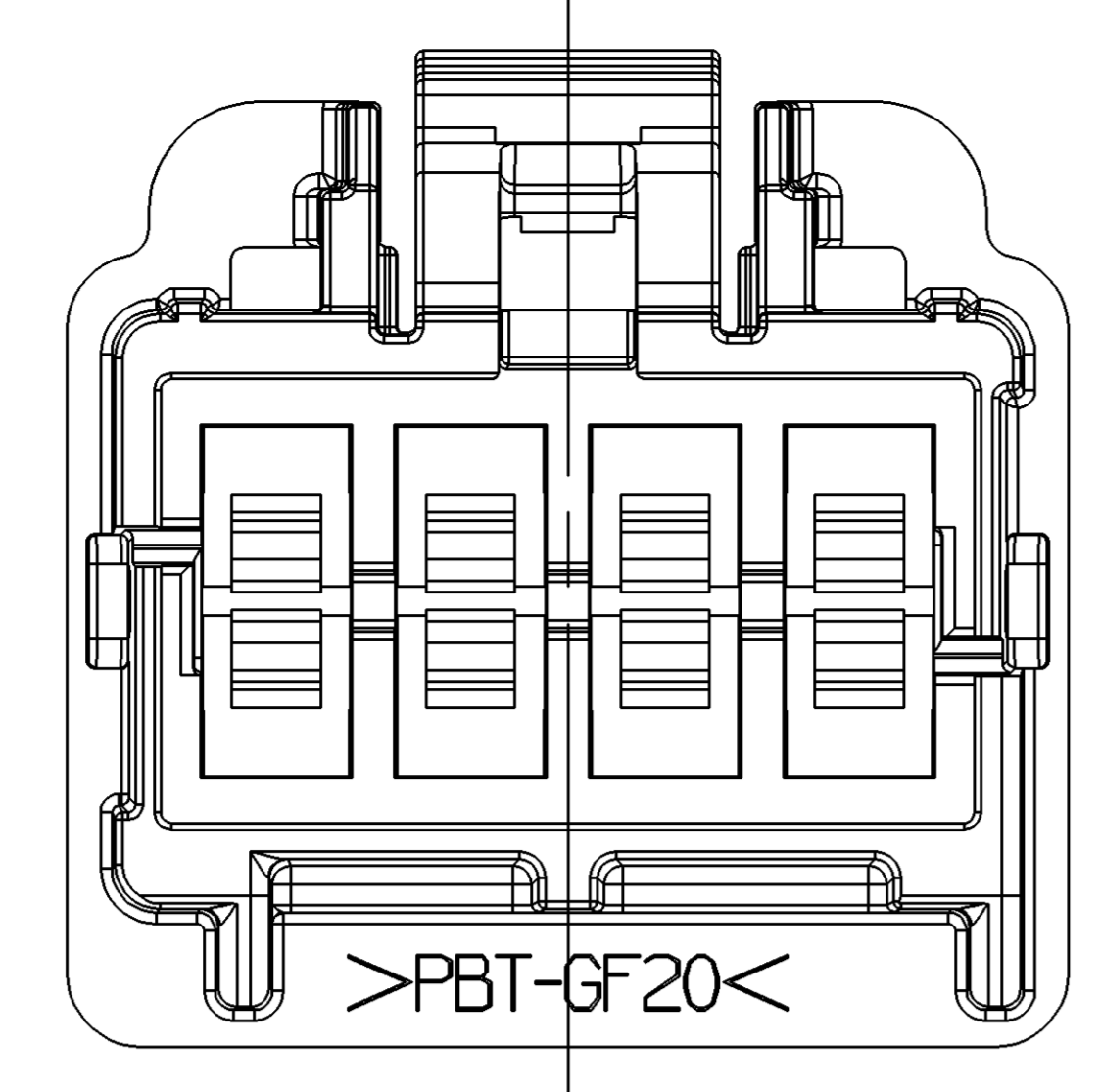


SYMBOL DEFINITION		MISSING SYMBOLS	
A DIMENSION WITHOUT AN INSPECTION REPORT SYMBOL DOES NOT REQUIRE INSPECTION. IT MAY BE CONTROLLED ON THE INDIVIDUAL COMPONENT DRAWING.	TOTAL NO OF INSPECTIONS REQUIRED	NO MISSING SYMBOL NUMBER	
	13		
	LAST NO. USED		
	11		

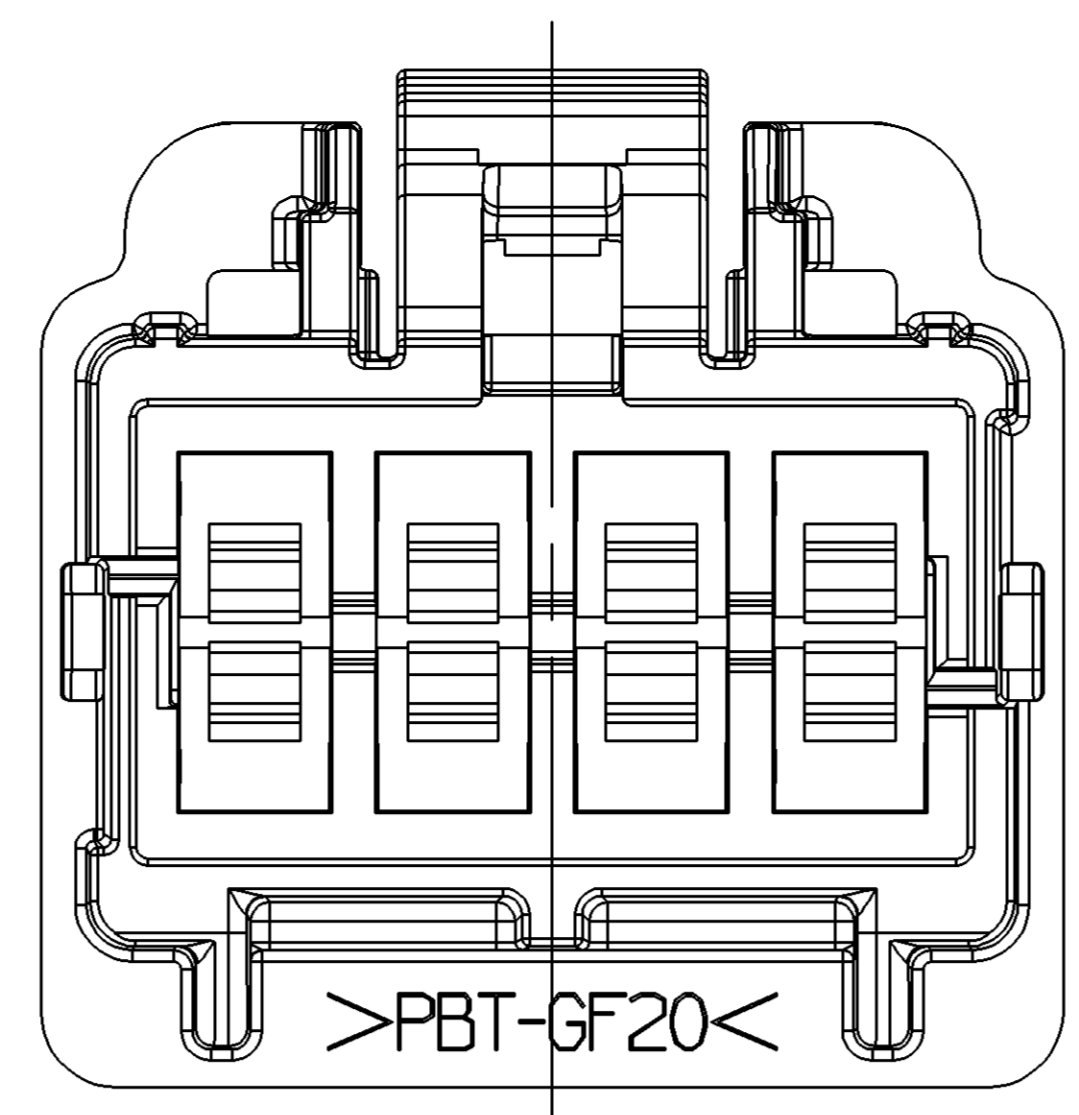
DWO STATUS				REVISION HISTORY				AUTH		DR		APVD	
DATE	STG	REV	N/P	CHG	ZONE								
21DEC05	R	01	-	-		ALL PARTS - RELEASED				275689	RH	RH	RB



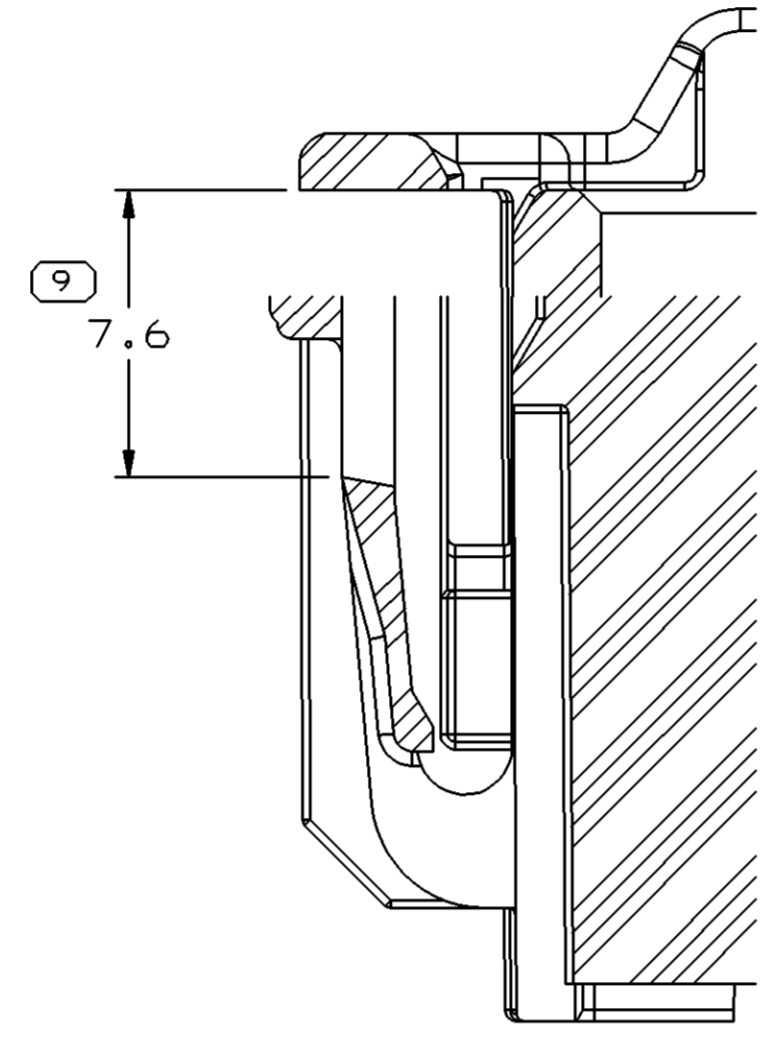
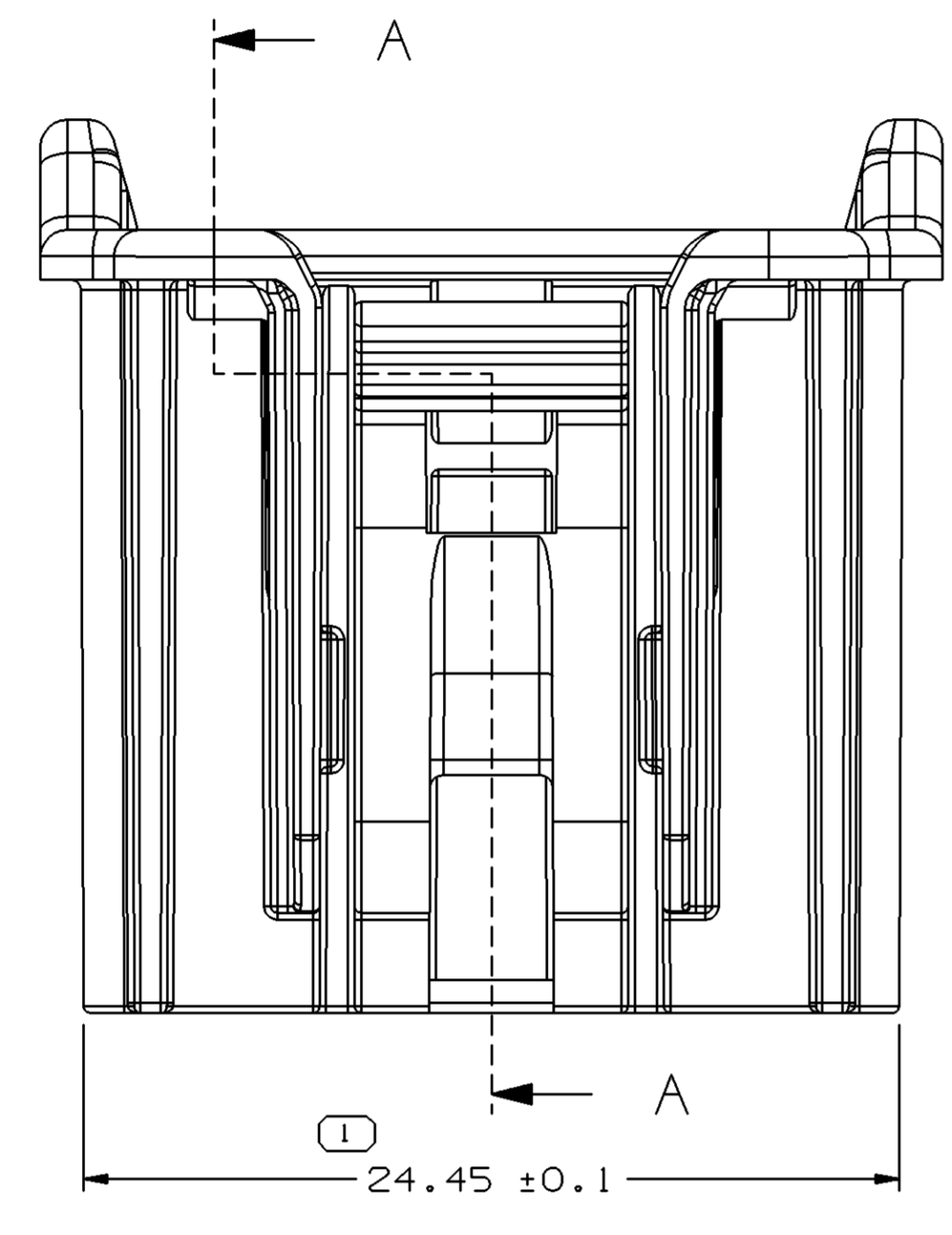
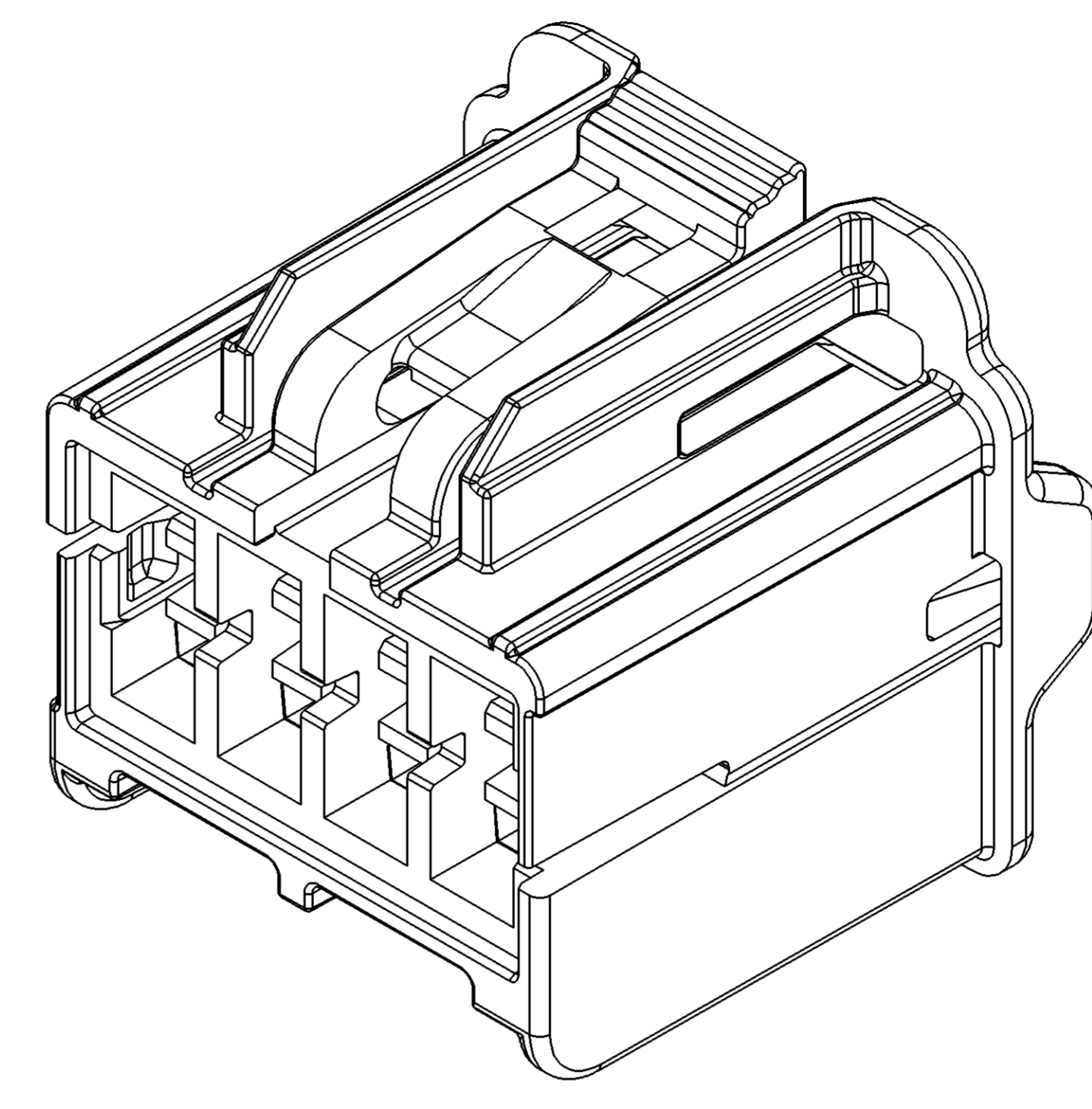
TYPE 102
SAME AS TYPE 101
EXCEPT AS SHOWN



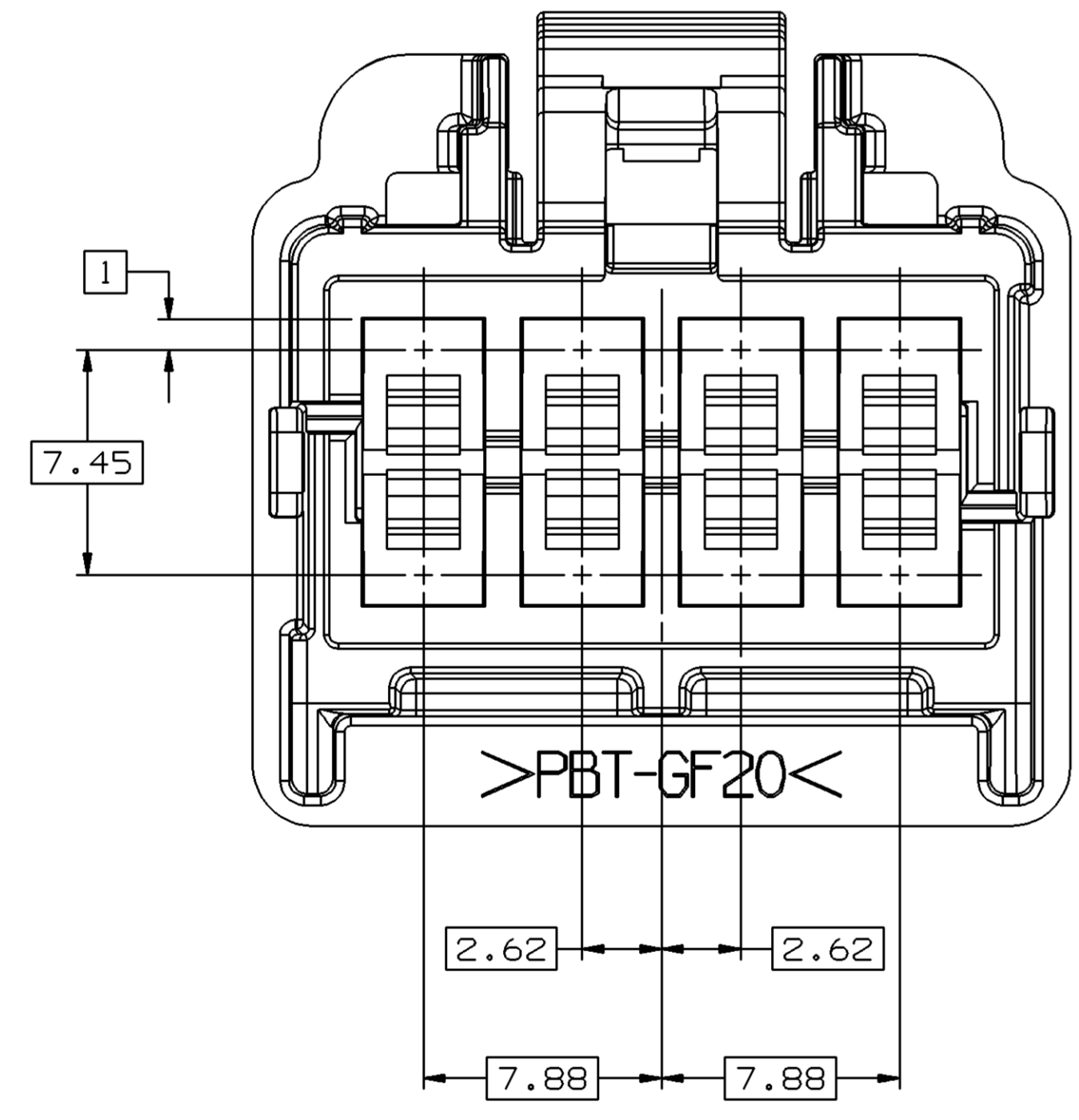
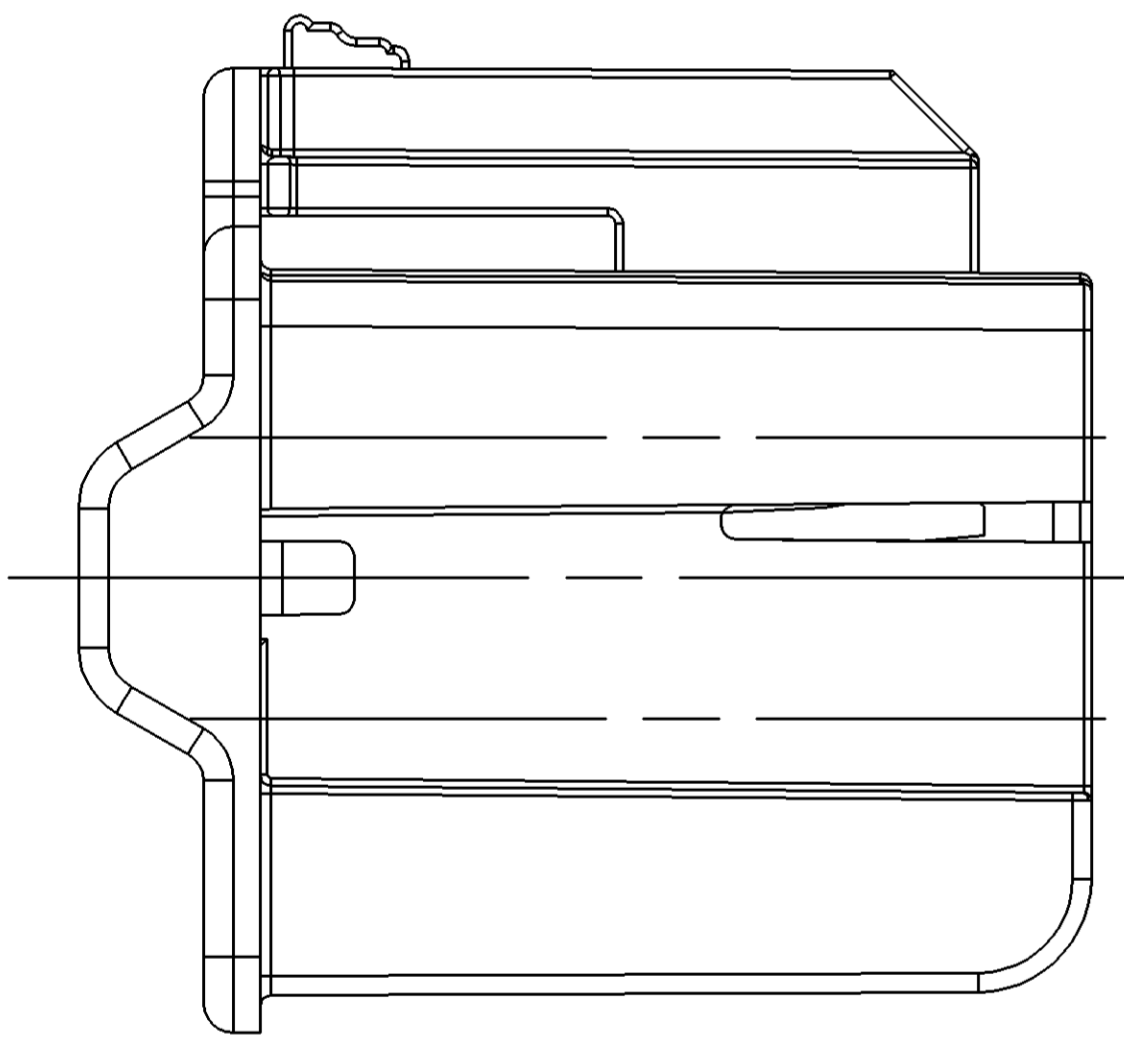
TYPE 103
SAME AS TYPE 101
EXCEPT AS SHOWN



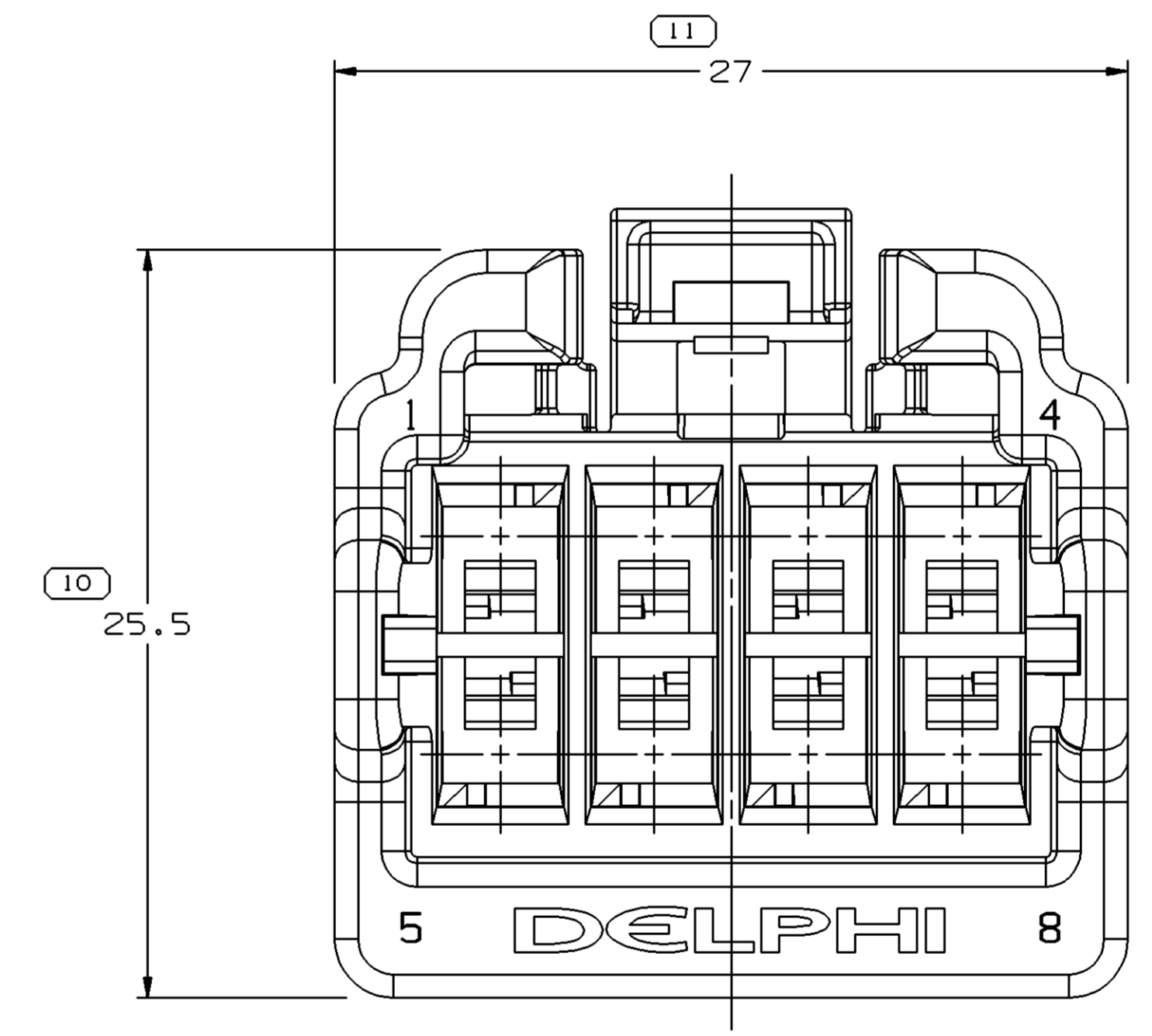
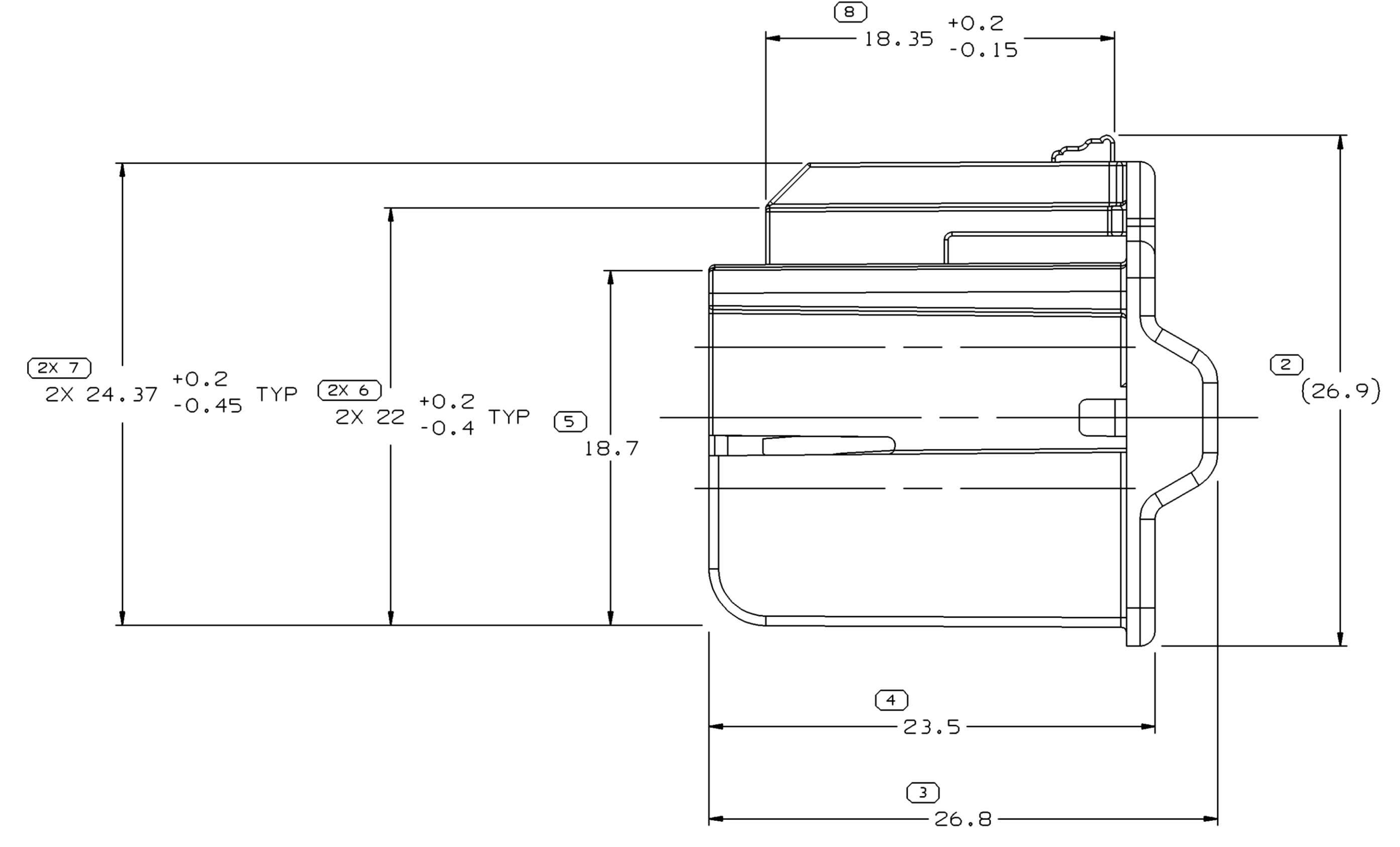
TYPE 104
SAME AS TYPE 101
EXCEPT AS SHOWN



SECTION A - A



TYPE 101



NOTES

- UNLESS OTHERWISE SPECIFIED AND/OR INDICATED:
DIMENSIONS ARE TO FACE OF VIEW SHOWN AND AUTOMATICALLY ROUNDED BY COMPUTER FOR INSPECTION (SEE MATH MODEL FOR PRECISE DIMENSIONS). FOR ALL OTHER DIMENSIONS NOT SHOWN BUT REQUIRED FOR TOOL BUILD, SEE MATH MODEL FOR PRECISE TOOL PATH DATA.
- THESE PARTS USED IN ASSEMBLY (SEE CHART).
- MATERIAL RECYCLING CODE PER ISO 11469. (1.5)X(0.1) RAISED CHARACTERS AS SHOWN TO BE LOCATED ON ANY EXTERIOR SURFACE. OPTIONAL CONSTRUCTION TO BE NO MATERIAL RECYCLING CODE.
- REFERENCE MATING COMPONENTS OR EQUIVALENT:
HEADER ASSEMBLY 15464936
- THESE PARTS ACCEPT THE FOLLOWING COMPONENTS OR EQUIVALENT:
TERMINAL 15304712
CONNECTOR POSITION ASSURANCE LOCK 15431117
TERMINAL POSITION ASSURANCE LOCK 15465072
- (1.5)X(0.1) RAISED DELPHI CORPORATE BRAND TO BE LOCATED ON ANY EXTERIOR SURFACE, PREFERABLY VISIBLE AT FINAL ASSEMBLY. OPTIONAL CONSTRUCTION FOR EXISTING TOALING MAY BE "PED" OR NO LOGO.

PART NO	REV	N/P	STATUS	MATERIAL SPECIFICATION AND COLOR	TYPE	USCAR TYPE	USED IN ASSEMBLY	VOLUME
13570025	01	-		M4629007 PBT GF20 GRN	104	D		5,571
13570024	01	-		M4629010 PBT GF20 BRN	103	C		5,559
13570023	01	-		M4629003 PBT GF20 GRA	102	B		5,559
13570022	01	-		M4629002 PBT GF20 BLK	101	A		5,547

DIMENSIONAL RANGE (MM)	TOLERANCE UNLESS OTHERWISE SPECIFIED	CHART ET
FROM > 0	> 20	> 30
TO 20	30	70
	70	100
	100	150
	150	200
	200	250
	250	300
	300	400

DWO TYPE: PART DRAWING

UNLESS OTHERWISE SPECIFIED THIS DOCUMENT IS IN ACCORDANCE WITH ASME Y14.5M-1994 AS AMENDED BY THE 2003 DIMENSIONING AND TOLERANCING ADDENDUM (2003). SEPARATE PATTERNING OF FEATURES MAY BE OBTAINED SEPARATELY REGARDLESS OF DATUM REFERENCE.

ALL DIMENSIONS ARE IN MILLIMETERS

THIRD ANGLE PROJECTION

DO NOT SCALE

USE MATH DATA

UNSPRINTS

DELPHI

DELPHI PACKARD ELECTRIC SYSTEMS
WARREN, OH

DR	DATE
APVD1 ROBERT HURD	21DEC05
APVD2 ROBERT HURD	21DEC05
APVD3 RON BALWIN	04JAO6
APVD4	
APVD5	

MATERIAL REFERENCE: SUBSTANCES OF CONCERN AND RECYCLED CONTENT PER DELPHI 10949001

DRAWING NAME: TAXI CONN 8 F GT 280

DRAWING NUMBER: 13570021

SIZE: A0
SCALE: 5:1
FRAME NO: 1
SHEET NO: 1 OF 1
REV: 01

Mouser Electronics

Authorized Distributor

Click to View Pricing, Inventory, Delivery & Lifecycle Information:

[Aptiv:](#)

[13570023](#)