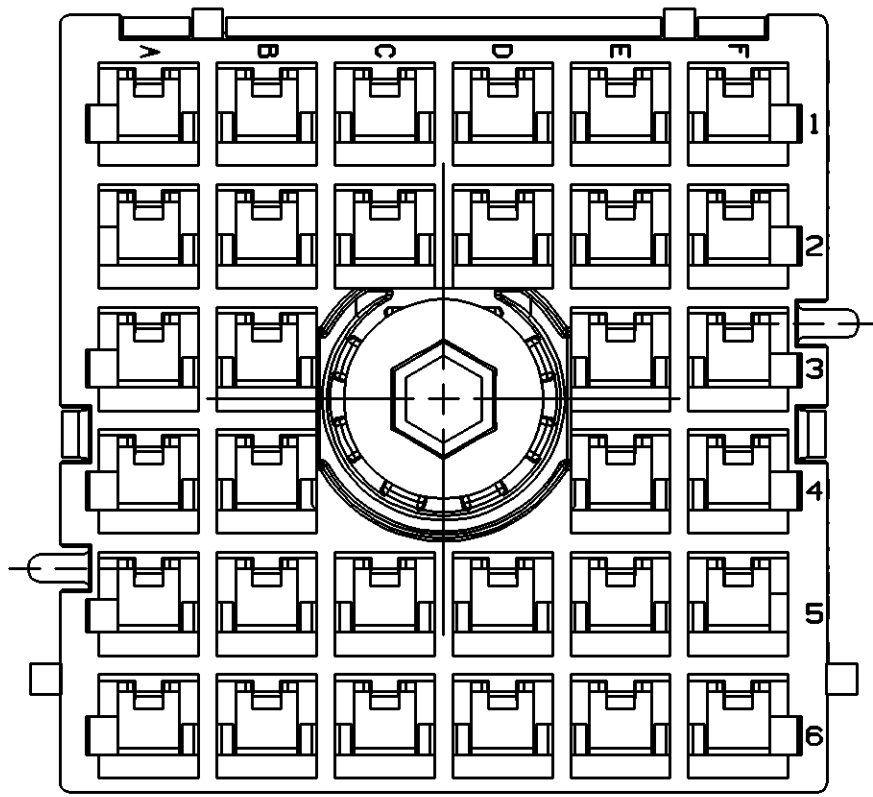
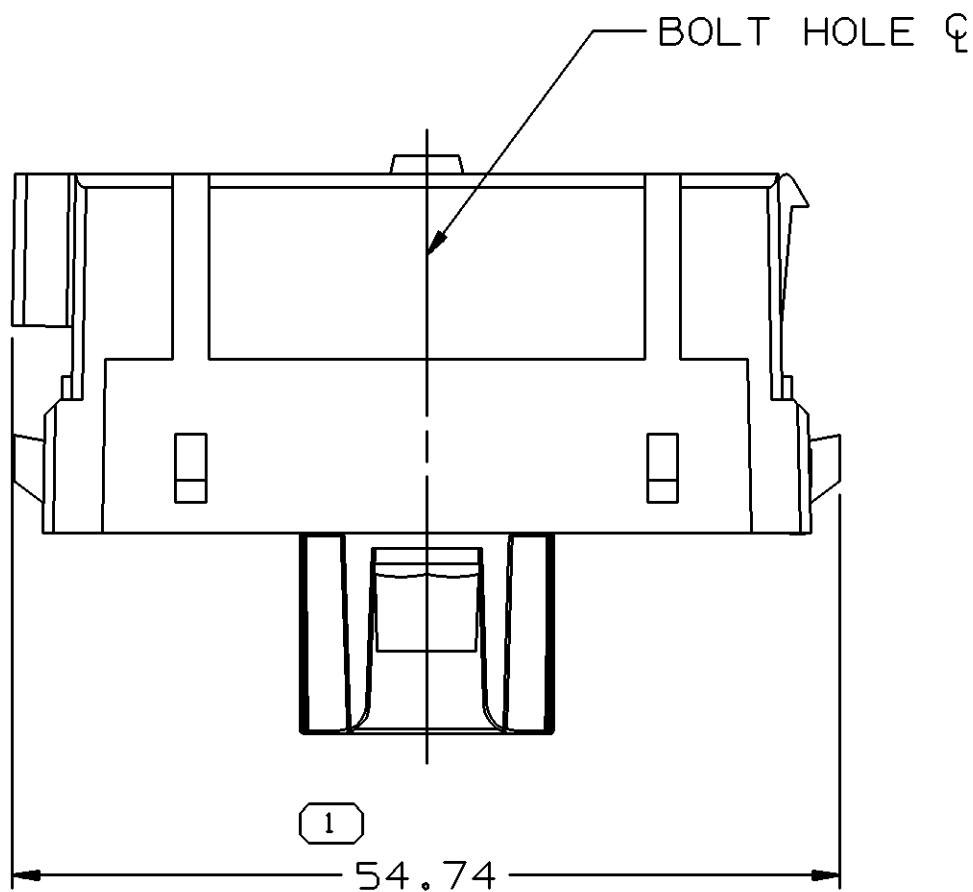
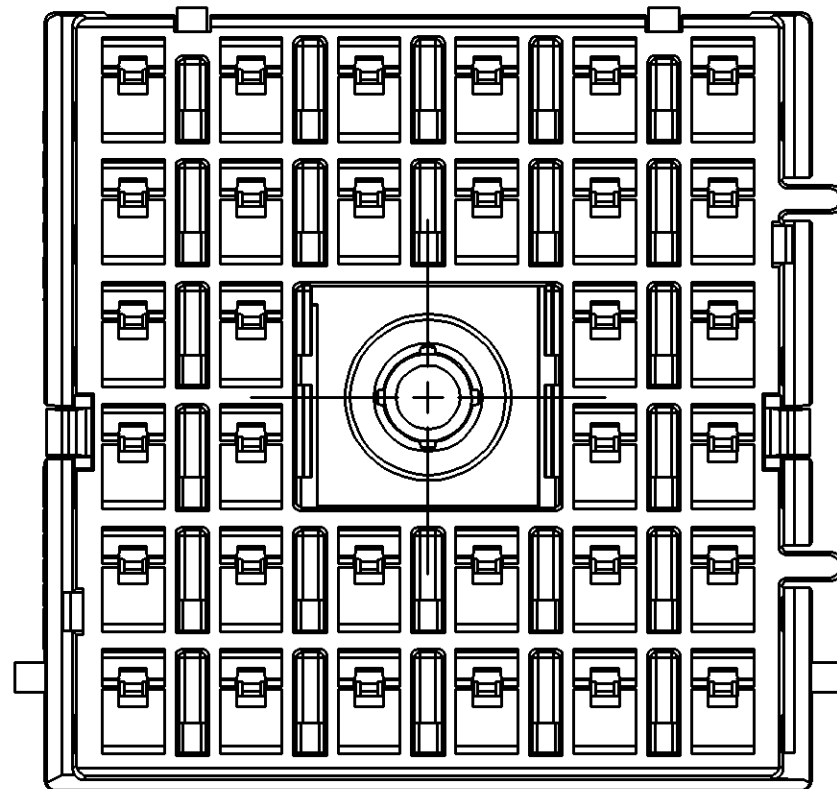
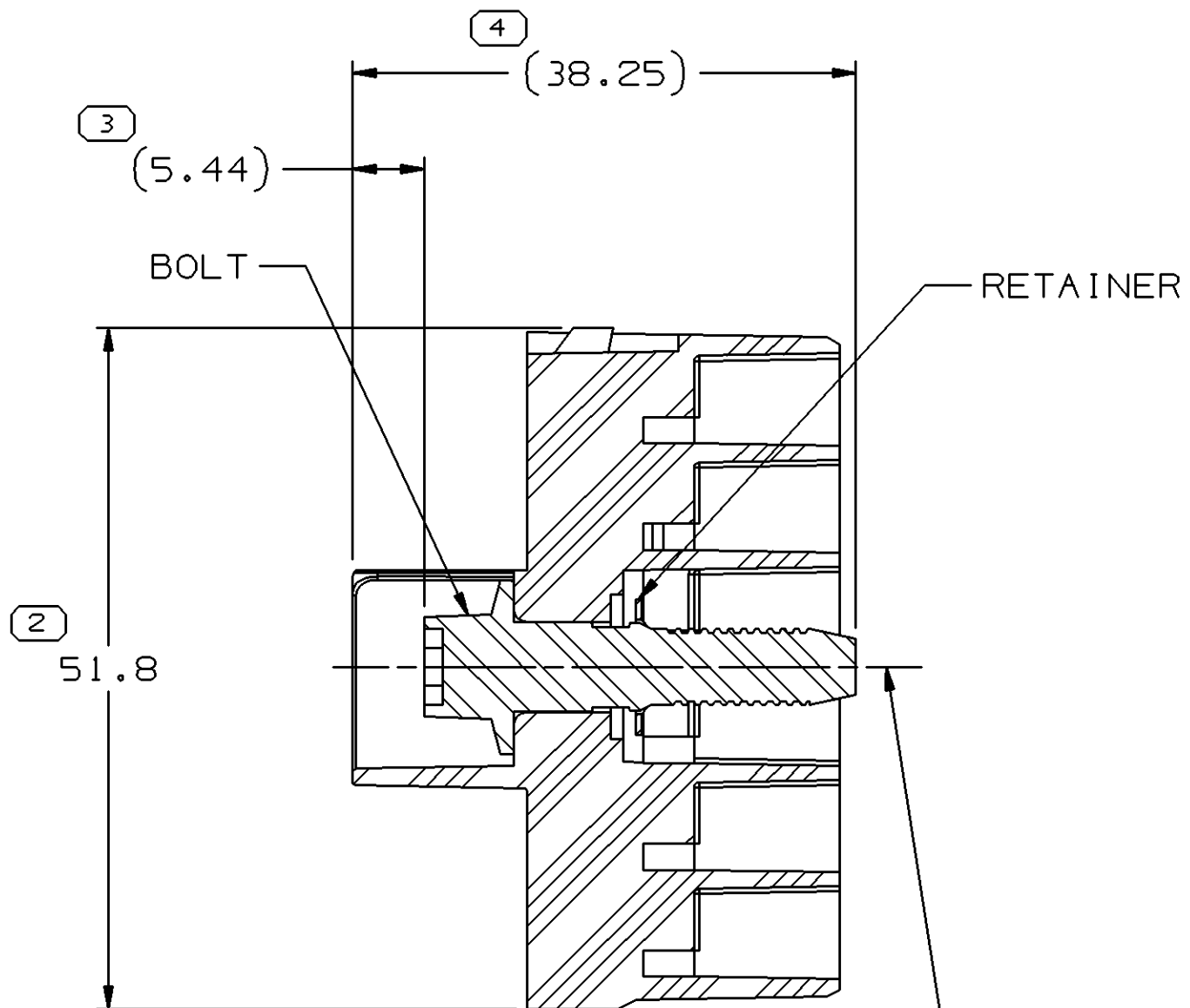


SYMBOL DEFINITION				MISSING SYMBOLS	
A DIMENSION WITHOUT AN INSPECTION REPORT SYMBOL DOES NOT REQUIRE INSPECTION. IT MAY BE CONTROLLED ON THE INDIVIDUAL COMPONENT DRAWING.				NO MISSING SYMBOL NUMBER	
				TOTAL NO OF INSPECTIONS REQUIRED	
				LAST NO. USED	
				4	
				4	

DATE		STG		REV		N/P		CHG		ZONE		REVISION HISTORY		AUTH		DR		APVD		APVD	
01MR01		R		001		-		-		-		15409852 WAS PE079071, 15409854 WAS PE079073: REVISED AND RELEASED		207307		RH		RH		RH	
28N001		R		002		-		-		-		ADDED NOTES		215538		TMR		TLP		MS	
25MY04		R		03		-		-		-		15492678 & 15492679 - RELEASED; 15409852 & 15409854 - RESTRICTED		256418		CCV		FRG		MGR	
270C05		R		04		-		-		-		15409852 & 15409854 - OBSOLETE		273542		CCV		FRG		MGR	



TYPE 102
SAME AS TYPE 101
EXCEPT AS SHOWN



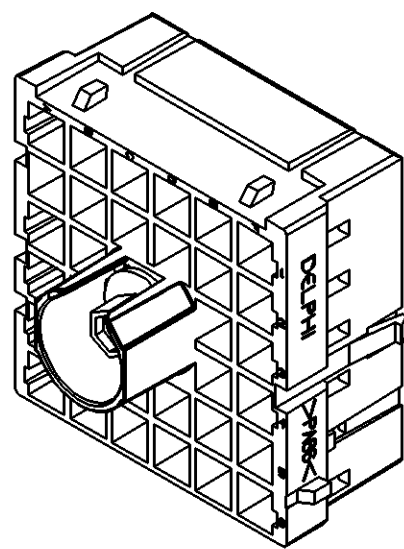
SECTION A - A

BOLT HOLE Ø

TYPE 101

NOTES

- UNLESS OTHERWISE SPECIFIED AND/OR INDICATED: DIMENSIONS ARE TO FACE OF VIEW SHOWN AND AUTOMATICALLY ROUNDED BY COMPUTER FOR INSPECTION (SEE MATH MODEL FOR PRECISE DIMENSIONS). FOR ALL OTHER DIMENSIONS NOT SHOWN BUT REQUIRED FOR TOOL BUILD, SEE MATH MODEL FOR PRECISE TOOL PATH DATA.
- THIS ASM TO BE BOLTED TO THE MATING CONNECTOR ASSEMBLY WITH A TORQUE ON THE BOLT OF 3 NM TO 5 NM.
- REFERENCE MATING COMPONENTS OR EQUIVALENT: LOWER HOUSING 15409849
- THIS PART ACCEPTS THE FOLLOWING COMPONENTS OR EQUIVALENT: SECONDARY TERMINAL LOCK (2) 15328851
- THESE COMPONENTS ARE THINSTOCK SENSITIVE.
- RETAINER MUST WITHSTAND A MINIMUM FORCE OF 805 N APPLIED AXIALLY TO THE THREADED END OF THE BOLT.
- ALL CAVITIES ACCEPT TERMINAL 12129424, 12110843 & 12129061 OR EQUIVALENT. MAXIMUM CORE CRIMP MUST BE LESS THAN 2.4 HIGH AND 3.75 WIDE. MAXIMUM INSULATION CRIMP MUST BE LESS THAN 6.1 HIGH AND 6.35 WIDE. MAXIMUM CABLE DIAMETER 5.5 MM.
- WHEN PARTS ARE SHIPPED, THEY MUST BE PACKED IN SUCH A WAY TO AVOID DAMAGE AND CONTAMINATION BY FOREIGN MATTER.
- SEALING CODE 0 - UNSEALED.



15492678	01	-		102	15409849	15492568	15492512	15328851	15409851
15492679	01	-		101	15409849	15492568	15492512	15328851	15409853
15409852	01	AC	OBSOLETE	102	15409849	12065852	12004737	15328851	15409851
15409854	01	AC	OBSOLETE	101	15409849	12065852	12004737	15328851	15409853
PART NO	REV	N/P	STATUS	TYPE	MATING LOWER HOUSING	BOLT	RETAINER	ACCEPTED TPA	CONNECTOR

DRAWING NAME		DRAWING NUMBER	
TAXI ASM CONN F M/P 280 FLXLK		15409856	
SIZE	SCALE	FRAME NO	SHEET NO
A0	2:1	1 OF 1	1 OF 1
REV	N/P	DATE	
		04	

DELPHI		DELPHI PACKARD ELECTRIC SYSTEMS		WARREN, OH	
OR		DATE			
APVD1 ROBERT HURD		01MR01			
APVD2 ROBERT HURD		01MR01			
APVD3 ROBERT HURD		01MR01			
APVD4					
APVD5					
SUBSTANCES OF CONCERN AND RECYCLED		CONTENT PER DELPHI 10949001			
MATERIAL					

DIMENSIONAL RANGE (MM)		TOLERANCE		ANGULAR TOLERANCE	
FROM	TO	±0.2	±0.3	±0.4	±0.5
20	30	±0.3	±0.4	±0.5	±0.6
30	40	±0.4	±0.5	±0.6	±0.8
40	50	±0.5	±0.6	±0.8	±1
50	60	±0.6	±0.8	±1	±1.2
60	70	±0.8	±1	±1.2	±1.5
70	80	±1	±1.2	±1.5	±2
80	90	±1.2	±1.5	±2	±2.5
90	100	±1.5	±2	±2.5	±3
100	120	±2	±2.5	±3	±4
120	150	±2.5	±3	±4	±5
150	200	±3	±4	±5	±6
200	250	±4	±5	±6	±8
250	300	±5	±6	±8	±10
300	400	±6	±8	±10	±15

THIRD ANGLE PROJECTION		DO NOT SCALE	

Mouser Electronics

Authorized Distributor

Click to View Pricing, Inventory, Delivery & Lifecycle Information:

[Aptiv:](#)

[15492679](#)