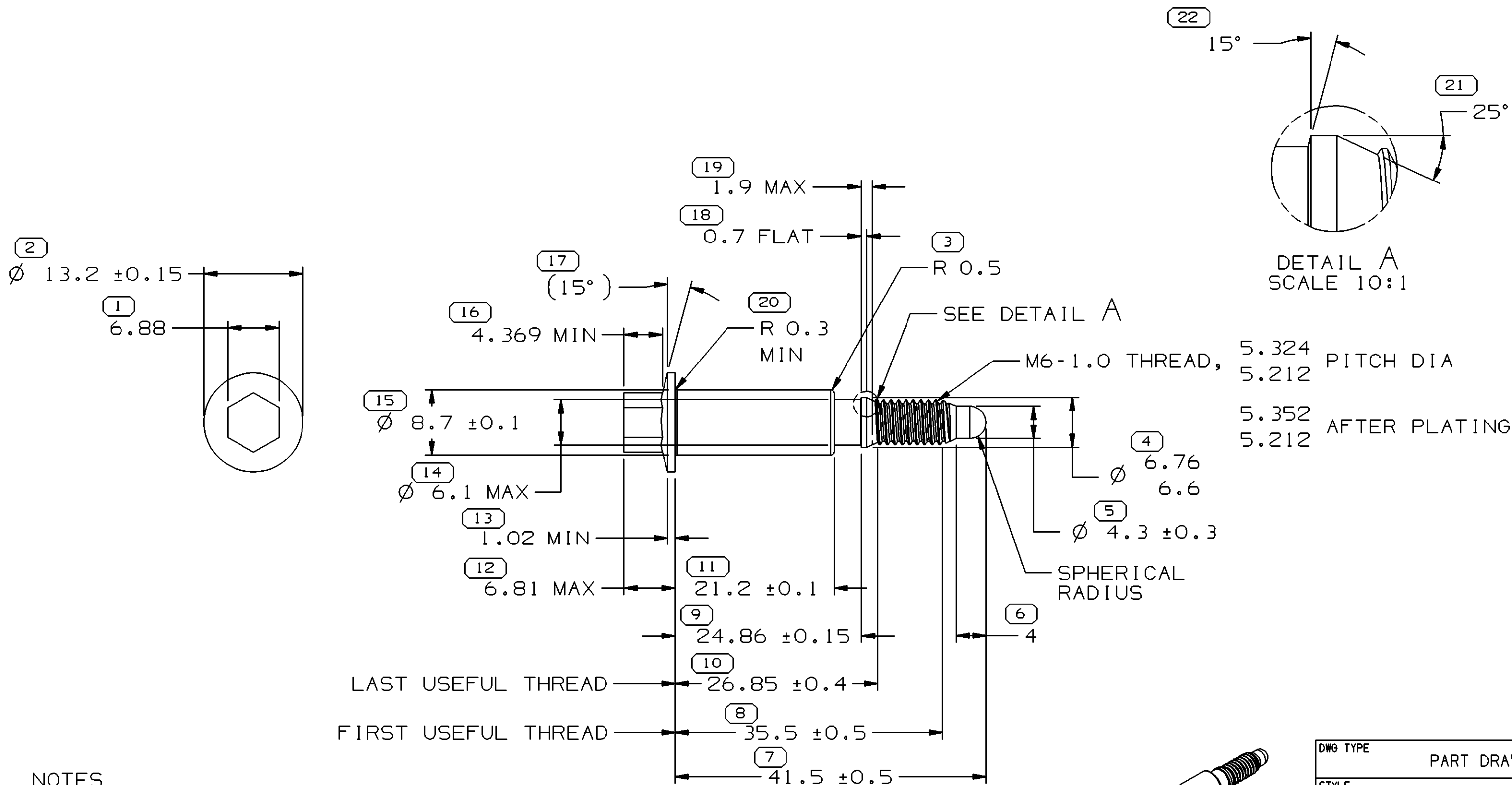


SYMBOL DEFINITION		
A DIMENSION WITHOUT AN INSPECTION REPORT SYMBOL □ DOES NOT REQUIRE INSPECTION. IT MAY BE CONTROLLED ON THE INDIVIDUAL COMPONENT DRAWING.	TOTAL NO OF INSPECTIONS REQUIRED	22
	LAST NO. USED	22

MISSING SYMBOLS					DWG STATUS		ZONE	REVISION HISTORY				1			
DATE	STG	REV	N/P	CHG	DATE	STG		AUTH	DR	APVD 1	APVD 2	AUTH	DR	APVD 1	APVD 2
23N004	R	01	-	-				RELEASED - WAS 12160553	255345	MJM	MJM	MR			



NOTES

- UNLESS OTHERWISE SPECIFIED AND/OR INDICATED:
DIMENSIONS ARE TO FACE OF VIEW SHOWN AND AUTOMATICALLY ROUNDED BY COMPUTER FOR INSPECTION (SEE MATH MODEL FOR PRECISE DIMENSIONS). FOR ALL OTHER DIMENSIONS NOT SHOWN BUT REQUIRED FOR TOOL BUILD, SEE MATH MODEL FOR PRECISE TOOL PATH DATA.
- HARDNESS TO BE ROCKWELL B 85 - 105.
(TO BE CHECKED ON THREADED END)
- PLATED PER DX551245-P.
- PART MUST BE FREE OF RUST AND OILY GRIT.
- USE M4 HEX-HEAD DRIVE SOCKET.
- BOLT MUST WITHSTAND 100 IN-LB OR 11.3 N-M THREAD STRIP TORQUE.
- THIS PART IS NOT CONTROLLED FOR AUTOMATIC FEEDING.

N/A PROCESS SENSITIVE DIMENSION	
DIMENSIONS ENCLOSED IN () INDICATE REFERENCE DIMENSIONS AND NO TOLERANCE LIMITS ARE ESTABLISHED	
DIMENSIONAL RANGE (MM)	CHART 6
FROM 0	> 12
TO 12	
TOLERANCE UNLESS OTHERWISE SPECIFIED	
± 0.15	± 0.3
ANGULAR TOLERANCE ± 2°	

DWG TYPE		PART DRAWING	
STYLE			
VOLUME (CM³)	DISTR CODE D		
UNLESS OTHERWISE SPECIFIED			
THIS DOCUMENT IS IN ACCORDANCE WITH ASME Y14.5M-1994 AS AMENDED BY THE GM GLOBAL DIMENSIONING AND TOLERANCING ADDENDUM - 1997. ALL GEOMETRIC TOLERANCES AND RELATED DATUMS APPLY RFS. RULE #1 (PERFECT FORM AT MMC) DOES NOT APPLY WHEN RELATIONSHIP BETWEEN FEATURES IS ESTABLISHED BY ORIENTATION OR LOCATION TOLERANCES. SEPARATE POSITION CALLOUTS MAY BE GAGED SEPARATELY, REGARDLESS OF DATUM REFERENCE.			
ALL DIMENSIONS ARE IN MILLIMETERS			
REFERENCE			
THIRD ANGLE PROJECTION	DO NOT SCALE	USE MATH DATA	
UNIGRAPHICS		UNIGRAPHICS	

DELPHI			
DELPHI PACKARD ELECTRIC SYSTEMS WARREN, OH			
DR		DATE	
APVD1 M. MAYER	23N004		
APVD2 M. MAYER	23N004		
APVD3 MATT ROUSSEL	23N004		
APVD4			
APVD5			
SUBSTANCES OF CONCERN AND RECYCLED CONTENT PER DELPHI 10949001			
MATERIAL GM 260M (1018-1022) STEEL			
DRAWING NAME MOUN BOLT			
DRAWING NUMBER 15492620			
SIZE A2	SCALE 2:1	FRAME NO 1 OF 1	SHEET NO 1 OF 1
STG R	REV 01	N/P -	

Mouser Electronics

Authorized Distributor

Click to View Pricing, Inventory, Delivery & Lifecycle Information:

[Aptiv:](#)
[15492620](#)