

NOTE- TERMINALS ARE IDENTICAL.

MATERIAL- RECOMMENDED MATERIAL IS P-1546 (CDA 210) - EXTRA SPRING TEMPER - TIN PLATED BRASS  
PLATING THICKNESS: 0.0026 - 0.0076 MM  
TENSILE STRENGTH: 430 - 480 MPA  
(MATERIAL SHOULD HAVE AN ELECTRICAL CONDUCTIVITY ≥ 20% IACS AT 68° F. USE OF MATERIAL WITH CONDUCTIVITY < 20% IACS SHOULD BE APPROVED BY DELPHI PACKARD ELECTRIC.)

## MATING TERMINAL INFORMATION

MUST BE BLENDED AT POINT OF INTERSECTION

NO DRAFT THIS SURFACE

♀ CONNECTOR

30° (OPTIONAL)  
1 MAX (OPTIONAL)

## SECTION A-A

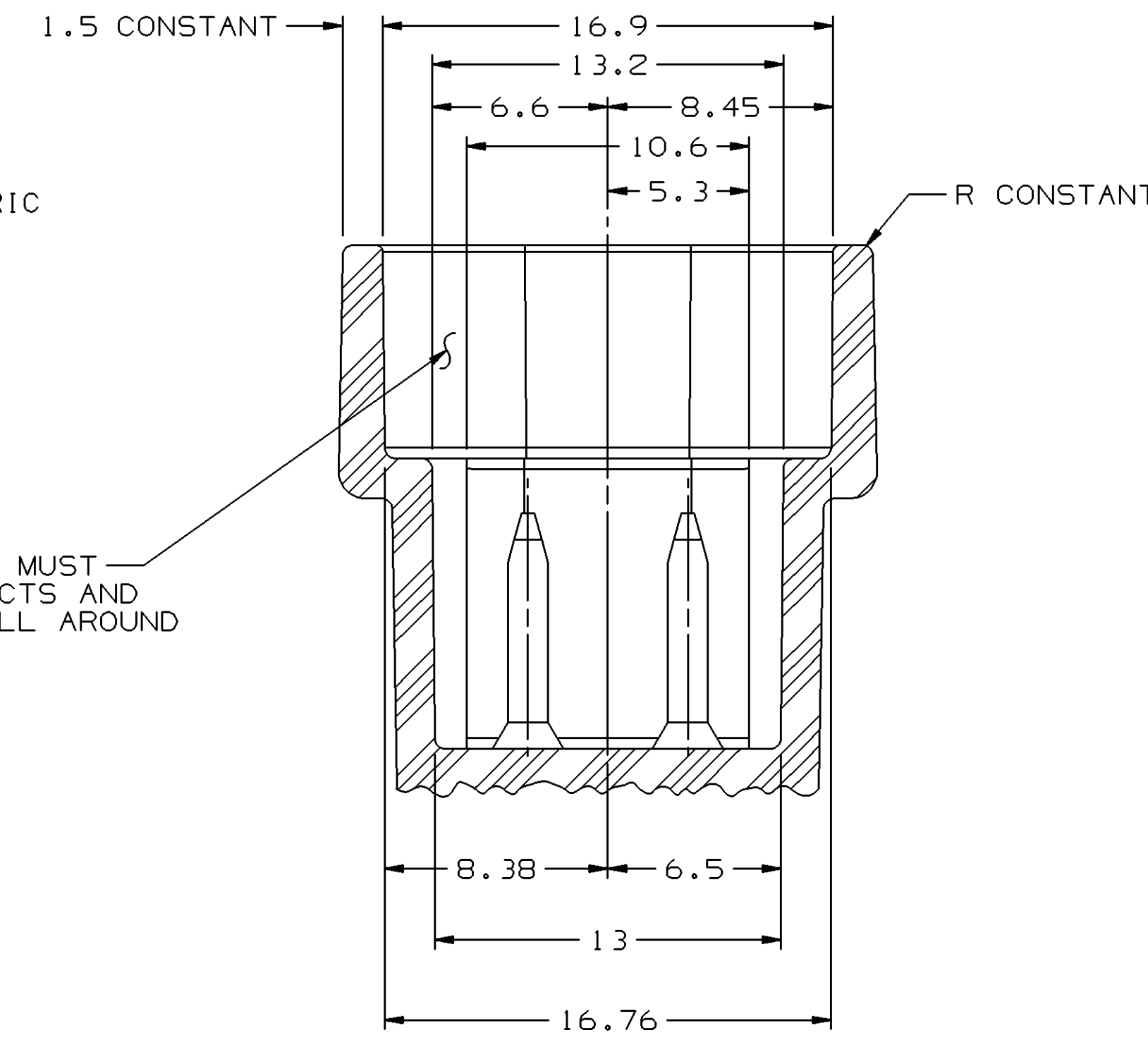
### NOTES

1. ALL RADII 0.4, UNLESS OTHERWISE SPECIFIED
2. RECOMMENDED MATERIAL - GLASS FILLED NYLON OR POLYESTER
3. WHEN USING THIS INFORMATION FOR A NEW DESIGN, REQUEST THE LATEST COPY OF THIS PRINT FROM DELPHI PACKARD ELECTRIC

## MATING CONNECTOR INFORMATION

SEALING SURFACE MUST BE FREE OF DEFECTS AND PARTING LINES ALL AROUND

1.5 CONSTANT



## SECTION B-B

### NOTES

1. UNLESS OTHERWISE SPECIFIED AND/OR INDICATED: DIMENSIONS ARE TO FACE OF VIEW SHOWN AND AUTOMATICALLY ROUNDED BY COMPUTER FOR INSPECTION. (SEE MATH MODEL FOR PRECISE DIMENSIONS.) FOR ALL OTHER DIMENSIONS NOT SHOWN BUT REQUIRED FOR TOOL BUILD, SEE MATH MODEL FOR PRECISE TOOL PATH DATA.
2. MATING COMPONENTS OR EQUIVALENT:  
CAVITIES TO ACCEPT TERMINAL - 12048074  
CABLE SEAL - 12048086  
SECONDARY LOCK - 15487369
3. THIS CONNECTOR IS TO MATE WITH KNOCK SENSOR OR EQUIVALENT.
4. MAXIMUM CABLE DIAMETER - 2.8 MM
5. WHEN PARTS ARE SHIPPED, THEY MUST BE PACKED IN PLASTIC BAGS OR SHIPPING CONTAINERS MUST BE LINED WITH PLASTIC LINERS. BAGS OR LINERS MUST BE SEALED TO AVOID ENTRY OF FOREIGN MATTER.
6. SEALING CODE 3 - DESIGN WILL PASS SALT FOG AND IMMERSION TEST AFTER CONDITIONING AS SPECIFIED IN ESA-644 (WEATHER-PACK), ESA-710 (METRI-PACK), ESA-650 (UNDERHOOD MICRO-PACK), C-4006 (WORLD CONNECTOR), ETC WHEN MATED TO MATING PART OR EQUIVALENT

DIMENSIONAL RANGE (MM)		TOLERANCE UNLESS OTHERWISE SPECIFIED	
FROM	TO	±	ANGULAR TOLERANCE
> 0	> 20	± 0.2	± 0.2
> 20	> 30	± 0.3	± 0.3
> 30	> 40	± 0.4	± 0.4
> 40	> 50	± 0.5	± 0.5
> 50	> 60	± 0.6	± 0.6
> 60	> 70	± 0.7	± 0.7
> 70	> 80	± 0.8	± 0.8
> 80	> 90	± 0.9	± 0.9
> 90	> 100	± 1.0	± 1.0
> 100	> 125	± 1.2	± 1.2
> 125	> 150	± 1.5	± 1.5
> 150	> 200	± 2.0	± 2.0
> 200	> 250	± 2.5	± 2.5
> 250	> 300	± 3.0	± 3.0
> 300	> 400	± 4.0	± 4.0

DWO TYPE		PART DRAWING	
STYLE		DISTR CODE	D
VOLUME (CM)			
UNLESS OTHERWISE SPECIFIED			
THIS DOCUMENT IS IN ACCORDANCE WITH ASME Y14.5M-1994 AS AMENDED BY THE 2018 GLOBAL DIMENSIONING AND TOLERANCING ADDENDUM-2018. SEPARATE PATTERNING OF FEATURES MAY BE GIVEN SEPARATELY REGARDLESS OF DATUM REFERENCE.			
ALL DIMENSIONS ARE IN MILLIMETERS			
REFERENCE			
THIRD ANGLE PROJECTION			
DO NOT SCALE			
USE MATH DATA			

DELPHI	
DELPHI PACKARD ELECTRIC SYSTEMS WARREN, OH	
DR	DATE
APVD1 J. RAINEY	245E03
APVD2 J. RAINEY	245E03
APVD3 CAROL FITCH	295E03
APVD4	
APVD5	
SUBSTANCES OF CONCERN AND RECYCLED CONTENT PER DELPHI 10949001	
MATERIAL SEC. NOTES	
DRAWING NAME	
ASM CONN 2 F M/P 150	
DRAWING NUMBER	
15487358	
SIZE	SCALE
A0	5:1
FRAME NO	SHEET NO
1 OF 1	1 OF 5
REV	N/P
01	AA

# Mouser Electronics

Authorized Distributor

Click to View Pricing, Inventory, Delivery & Lifecycle Information:

[Aptiv:](#)  
[15487358](#)