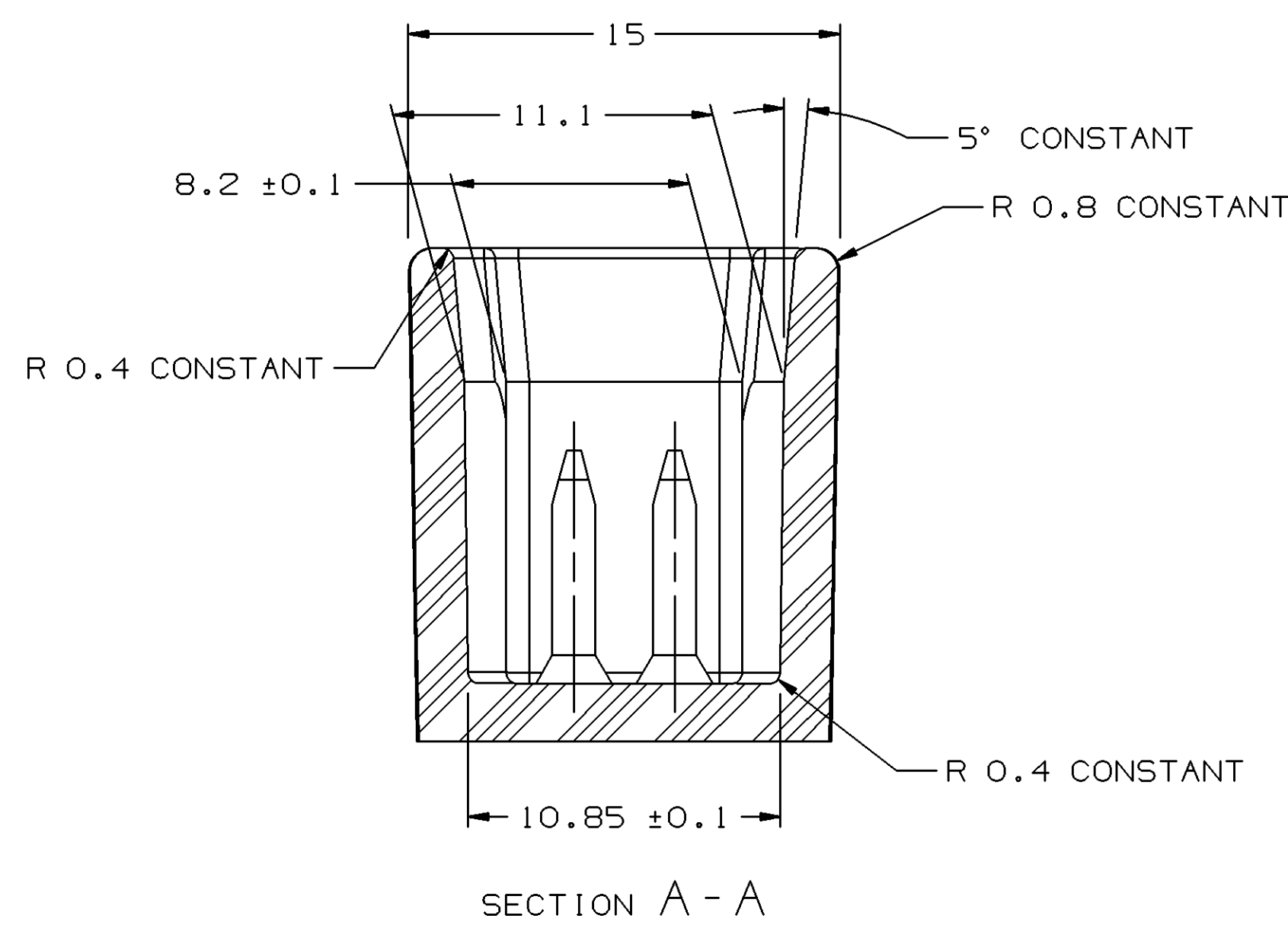
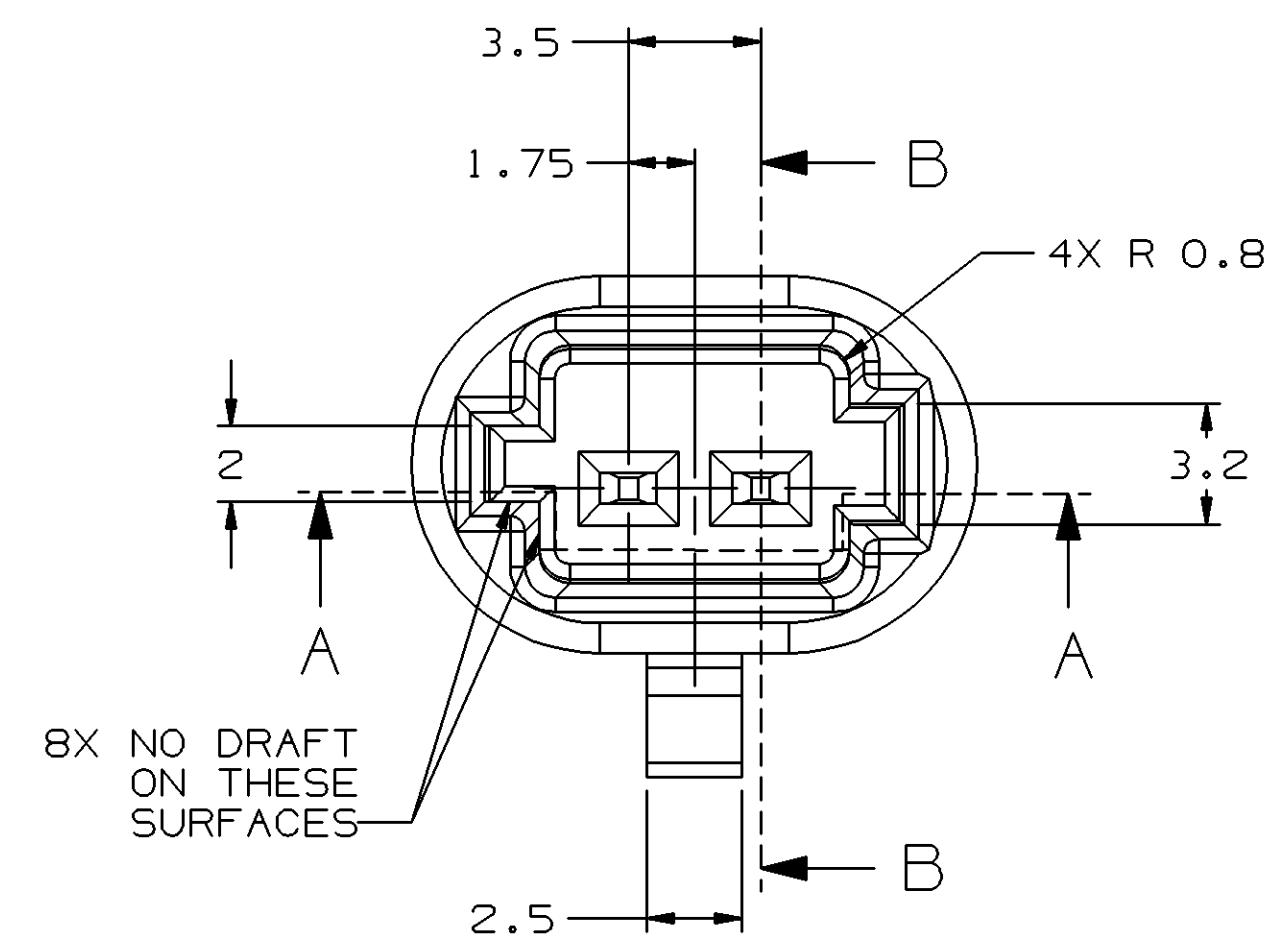


MATERIAL SPECIFICATIONS

RECOMMENDED  
 BASE METAL - CDA-210, EXTRA SPRING TEMPER  
 • TIN PLATING (WHERE APPLICABLE TO 125°C MAX CONTINUOUS USAGE):  
 0.0050±0.0025 MM (200±100 μIN) ELECTROPLATED TIN.  
 • USAGE OF PLATING TYPES OTHER THAN RECOMMENDED  
 MUST BE APPROVED BY DELPHI PACKARD ELECTRIC  
 SYSTEMS ENGINEERING.

MINIMUMS  
 ELECTRICAL CONDUCTIVITY - ≥28% IACS AT 20 °C. USE OF A  
 MATERIAL WITH CONDUCTIVITY <28% IACS MUST BE APPROVED  
 BY PACKARD ELECTRIC MATERIALS ENGINEERING.  
 TENSILE STRENGTH - 430 - 480 MPa  
 UNDERPLATING FOR TIN PLATING - FOR BASE MATERIALS CONTAINING 10% OR MORE ZINC,  
 AN UNDERPLATE OF COPPER 0.0025 MM (100 μIN) MINIMUM THICK IS REQUIRED.  
 PROCESSING LUBRICANT - ANY PROCESSING LUBRICANT REMAINING ON TERMINALS  
 MUST NOT VARNISH OR DEGRADE THE ELECTRICAL PERFORMANCE OF THE  
 CONNECTION UP TO A MAXIMUM TEMPERATURE OF 150°C. PROCESSING LUBRICANTS  
 MUST BE APPROVED BY DELPHI PACKARD ELECTRIC SYSTEMS ENGINEERING.

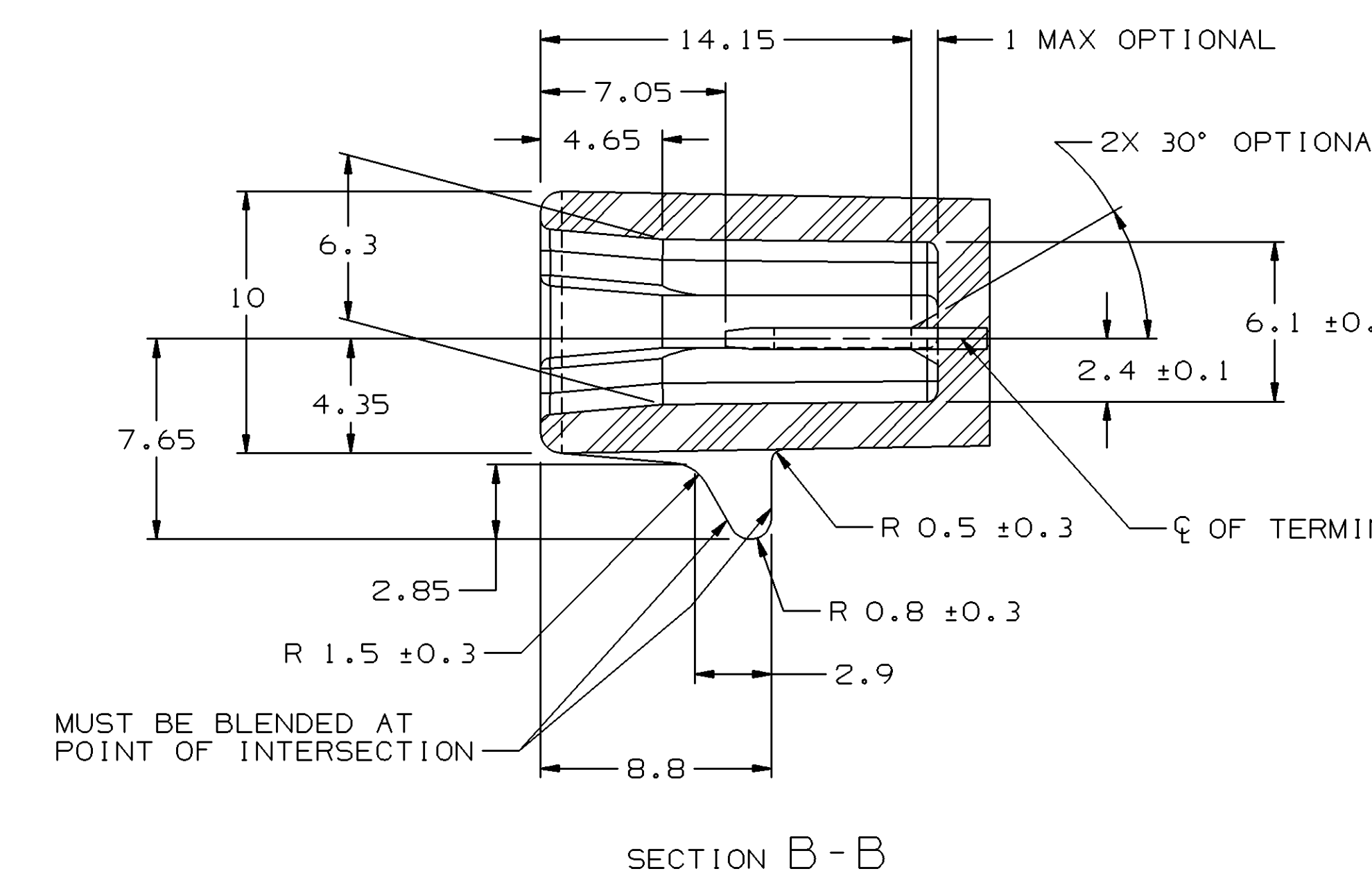
MATING BLADE INFORMATION



MATING CONNECTOR INFORMATION

SYMBOL DEFINITION		TOTAL NO OF INSPECTIONS REQUIRED	MISSING SYMBOLS
○	A DIMENSION WITHOUT AN INSPECTION REPORT SYMBOL DOES NOT REQUIRE INSPECTION. IT MAY BE CONTROLLED ON THE INDIVIDUAL COMPONENT DRAWING.	24	NO MISSING SYMBOL NUMBER
		LAST NO. USED	18

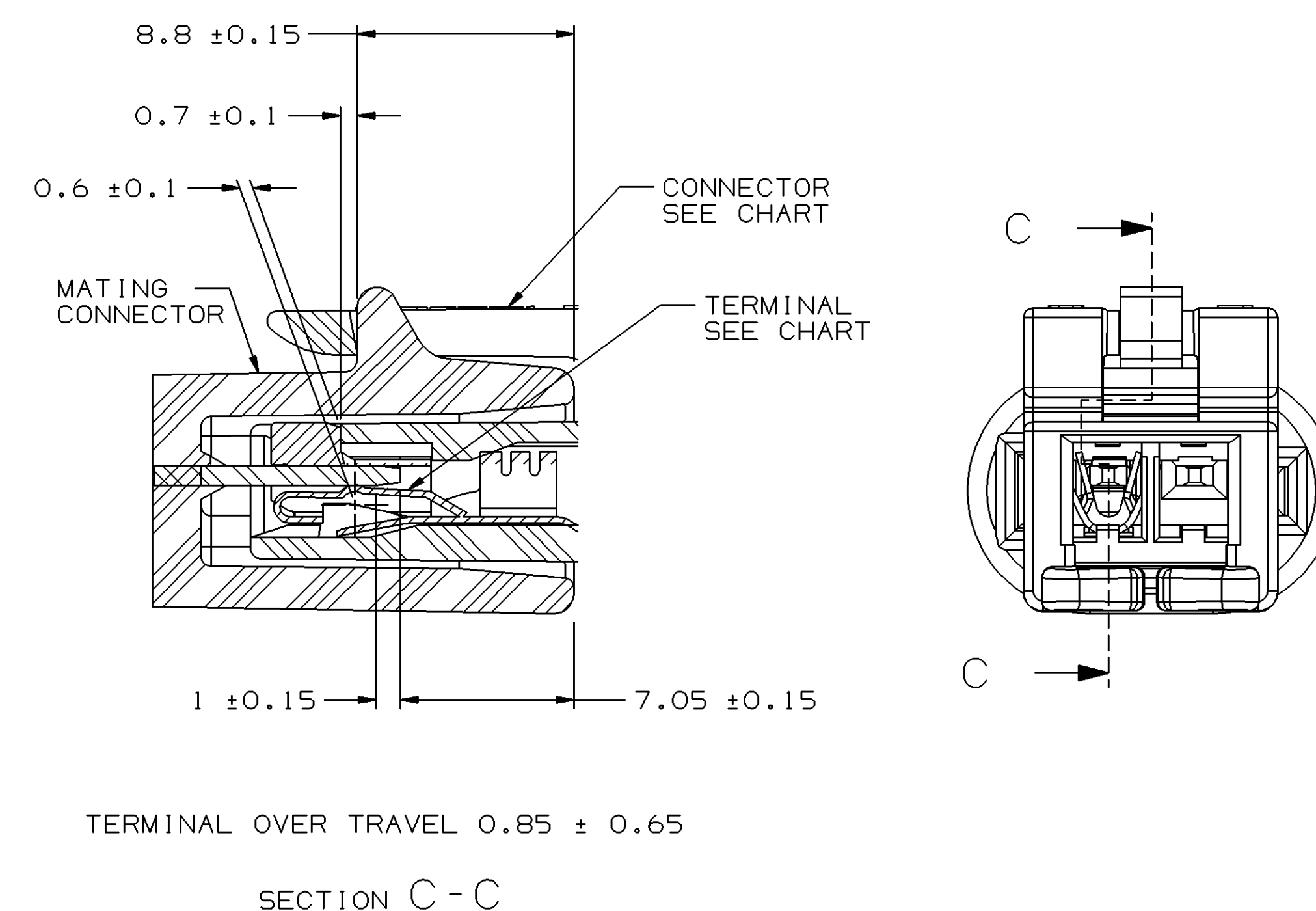
DWO STATUS		ZONE	REVISION HISTORY	AUTH	DR	APVD	APVD
DATE	STG	REV	W/P	CHK			
09JN05	R	01	-	-			
01SE05	R	01	AA	-			
30SE05	R	01	AB	-			
17OC05	R	01	AC	-			



NOTES  
 1. UNLESS OTHERWISE SPECIFIED AND/OR INDICATED:  
 DIMENSIONS ARE TO FACE OF VIEW SHOWN AND  
 AUTOMATICALLY ROUNDED BY COMPUTER FOR INSPECTION  
 (SEE MATH MODEL FOR PRECISE DIMENSIONS). FOR ALL  
 OTHER DIMENSIONS NOT SHOWN BUT REQUIRED FOR TOOL  
 BUILD, SEE MATH MODEL FOR PRECISE TOOL PATH DATA.  
 ALL RADI 0.4

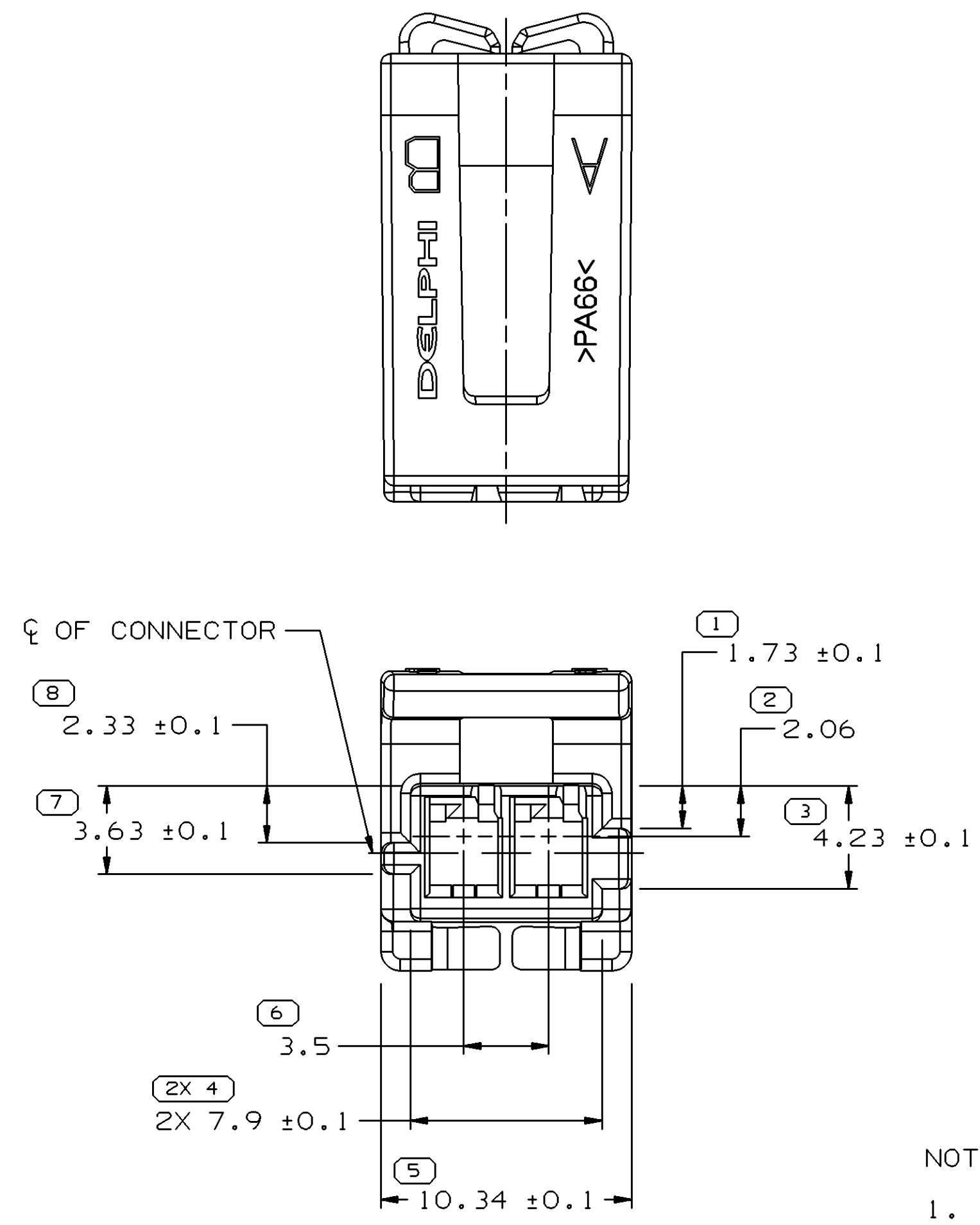
2. RECOMMENDED MATERIAL :  
 GLASS REINFORCED NYLON OR POLYESTER.

3. WHEN USING THIS INFORMATION FOR A NEW DESIGN, REQUEST  
 THE LATEST COPY OF THIS PRINT FROM DELPHI PACKARD  
 ELECTRIC DIVISION.



STACK ANALYSIS VIEW

13530018	12124075
CONNECTOR	TERMINAL



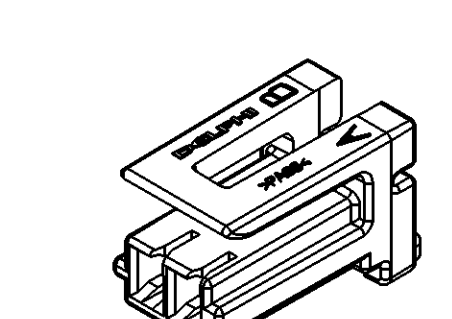
NOTES  
 1. UNLESS OTHERWISE SPECIFIED AND/OR INDICATED:  
 DIMENSIONS ARE TO FACE OF VIEW SHOWN AND  
 AUTOMATICALLY ROUNDED BY COMPUTER FOR INSPECTION  
 (SEE MATH MODEL FOR PRECISE DIMENSIONS). FOR ALL  
 OTHER DIMENSIONS NOT SHOWN BUT REQUIRED FOR TOOL  
 BUILD, SEE MATH MODEL FOR PRECISE TOOL PATH DATA.

2. MATERIAL RECYCLING CODE PER ISO 11469. (0.85)X(0.1) CHARACTERS  
 AS SHOWN TO BE LOCATED ON ANY EXTERIOR SURFACE.

3. THIS PART ACCEPTS THE FOLLOWING COMPONENTS OR EQUIVALENT:  
 CAVITIES TO ACCEPT 12124075 TERMINAL.

4. (0.75)X(0.1) DELPHI CORPORATE BRAND TO BE LOCATED ON ANY  
 EXTERIOR SURFACE, PREFERABLY VISIBLE AT FINAL ASSEMBLY.  
 OPTIONAL CONSTRUCTION FOR EXISTING TOOLING MAY BE "PED".

5. WHEN PARTS ARE TO BE SHIPPED THEY MUST BE PACKED IN PLASTIC  
 BAGS OR SHIPPING CONTAINERS MUST BE LINED WITH PLASTIC  
 LINERS. BAGS OR LINERS MUST BE SEALED TO AVOID ENTRY OF  
 FOREIGN MATTER.



VIEW SCALE DOES NOT REFLECT ACTUAL PART SIZE

DIMENSIONAL RANGE (MM)		CHART	ET
FROM	TO		
> 0	> 20	> 30	> 70
> 20	> 30	> 70	> 100
> 30	> 70	> 100	> 150
> 70	> 100	> 150	> 200
> 100	> 150	> 200	> 250
> 150	> 200	> 250	> 300
> 200	> 250	> 300	> 400
TOLERANCE UNLESS OTHERWISE SPECIFIED			
±0.15	±0.2	±0.3	±0.4
±0.5	±0.6	±0.8	±1
±1	±1.2	ANGULAR TOLERANCE 12°	

**DELPHI**  
 DELPHI PACKARD ELECTRIC SYSTEMS  
 WARREN, OH

DR	DATE
APVD1 J. R. BARRIENTOS	09JN05
APVD2 J. VILLAMIL	15JN05
APVD3 C. DEPROFIO	17JN05
APVD4	
APVD5	

UNLESS OTHERWISE SPECIFIED  
 THIS DOCUMENT IS IN ACCORDANCE WITH ASME Y14.5M-1994  
 AS AMENDED BY THE 04 GLOBAL DIMENSIONING AND  
 TOLERANCING ADDENDUM (2001). SEPARATE PATTERNING OF  
 FEATURES MAY BE OBTAINED SEPARATELY. REWORK OF DATUM  
 REFERENCES.

ALL DIMENSIONS ARE IN MILLIMETERS

REFERENCE

DO NOT SCALE  
 USE MATH DATA

THIRD ANGLE PROJECTION

UNSPRINTED

DRAWING NUMBER  
 13530018

SIZE A0 SCALE 5:1 FRAME NO 1 OF 1 SHEET NO 1 OF 1 REV N/P 01 AC

# Mouser Electronics

Authorized Distributor

Click to View Pricing, Inventory, Delivery & Lifecycle Information:

[Aptiv:](#)  
[13530018](#)