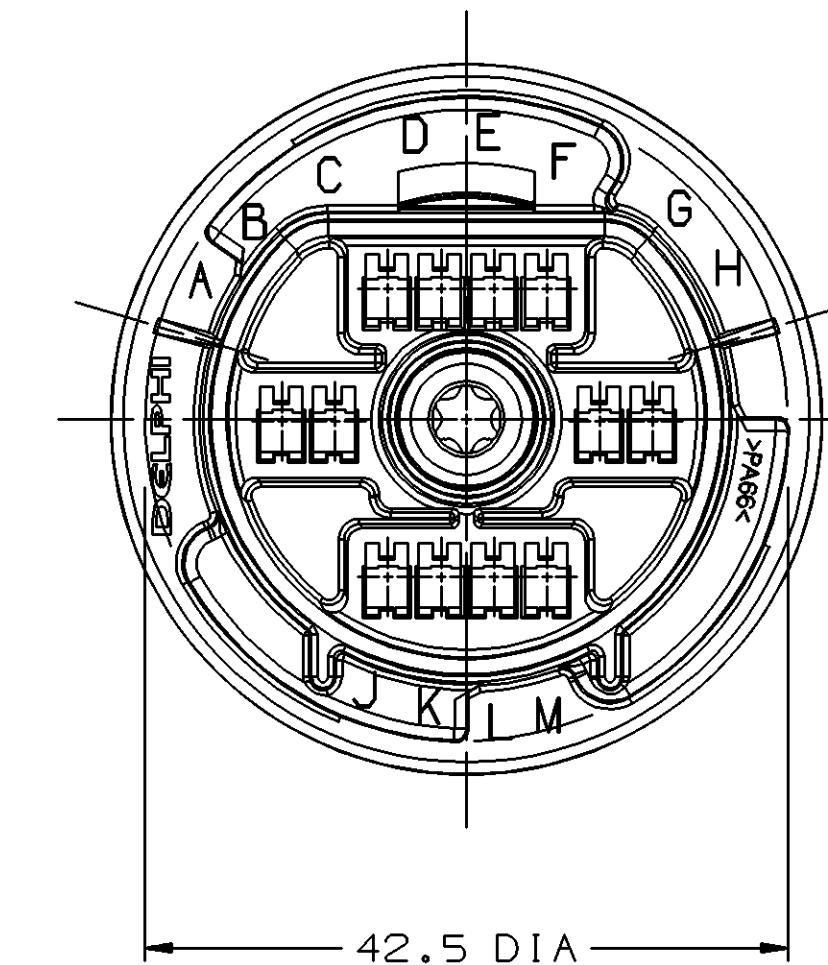
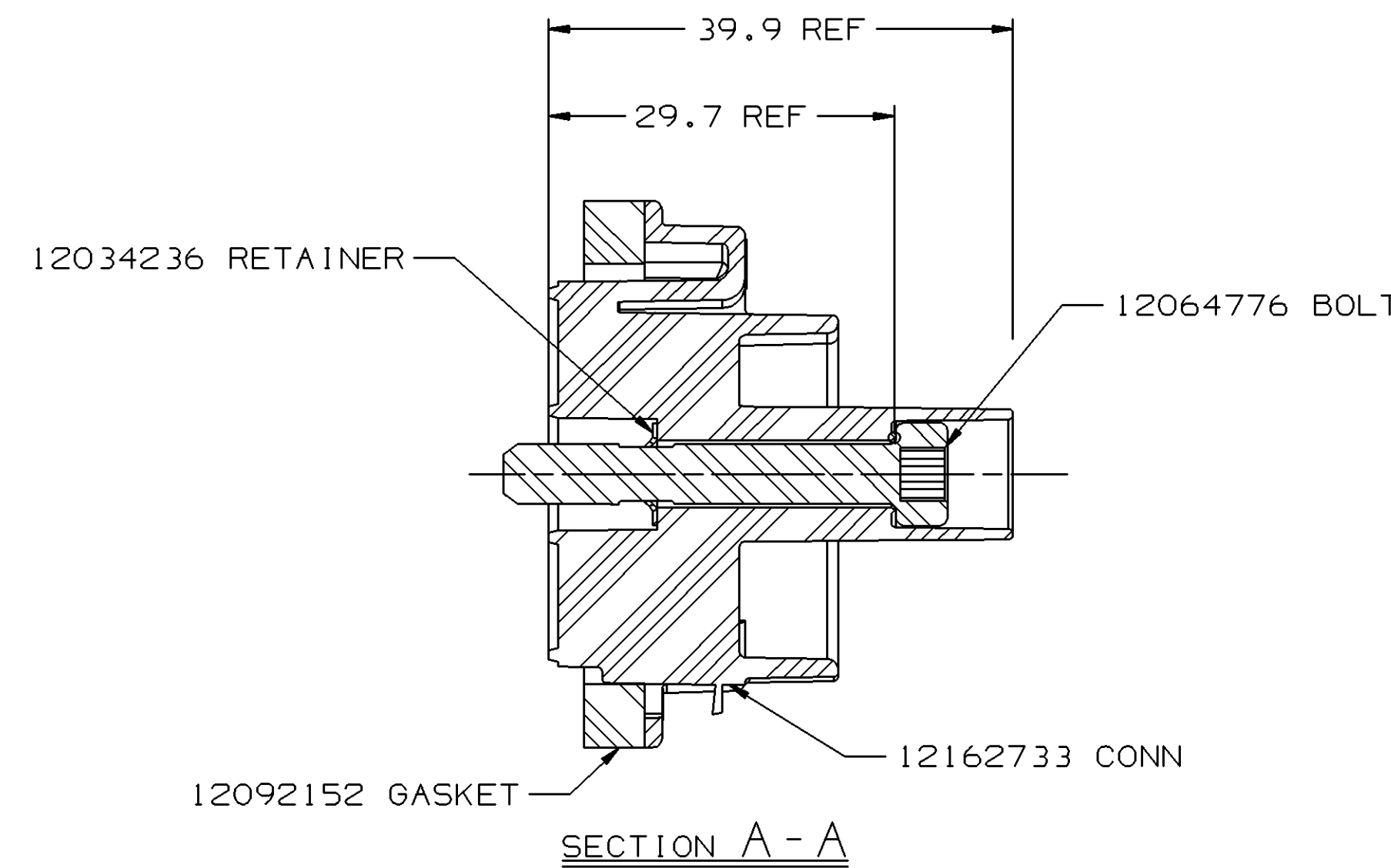
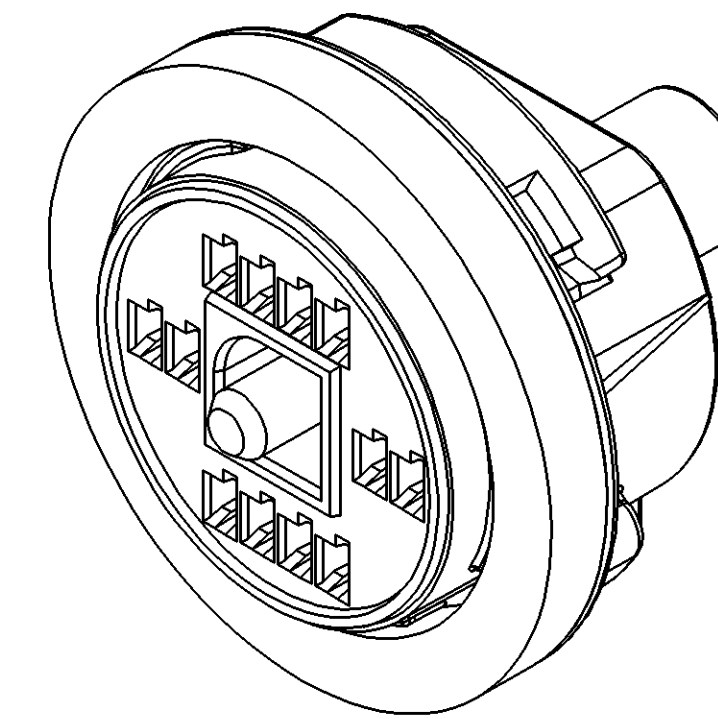
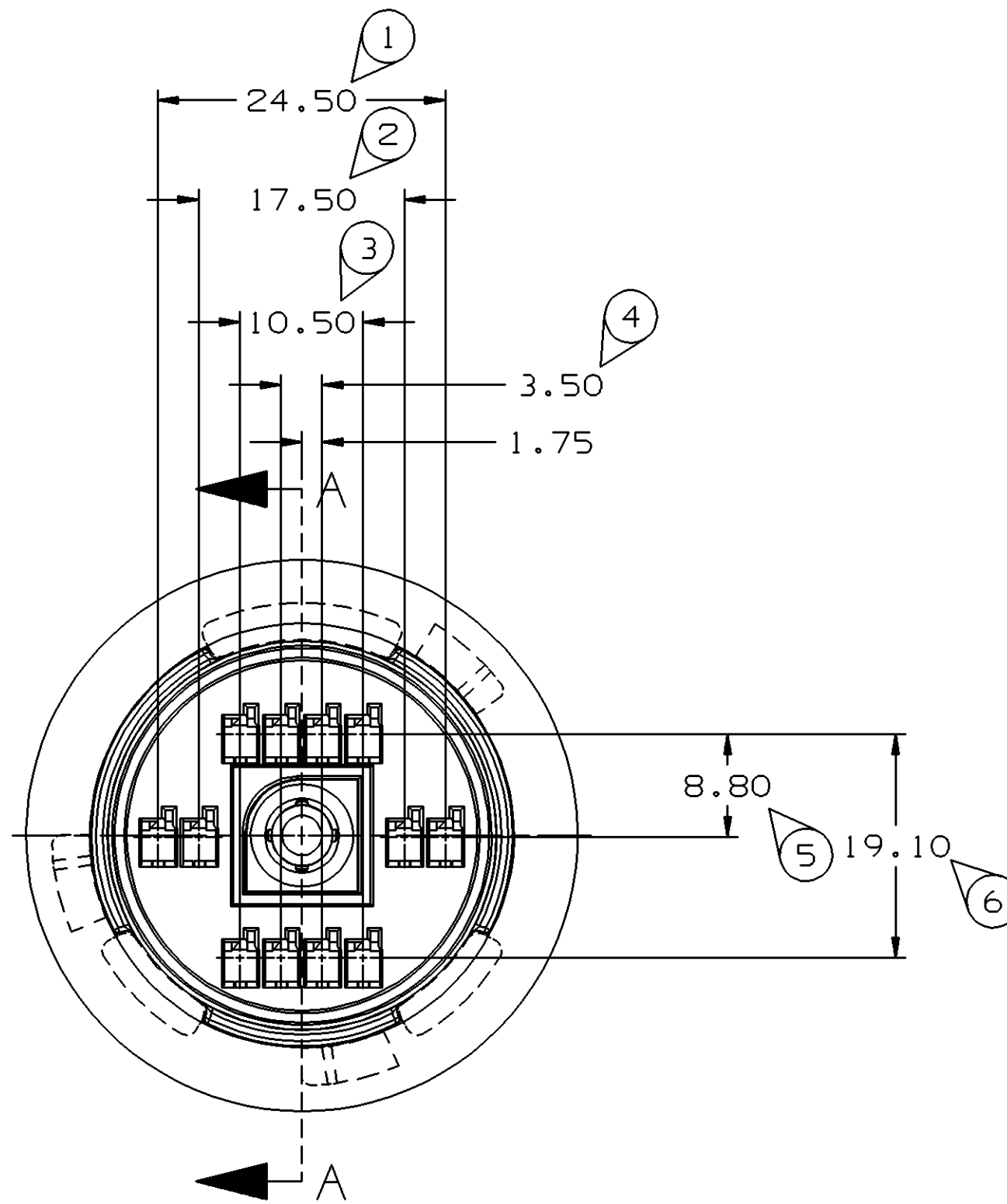
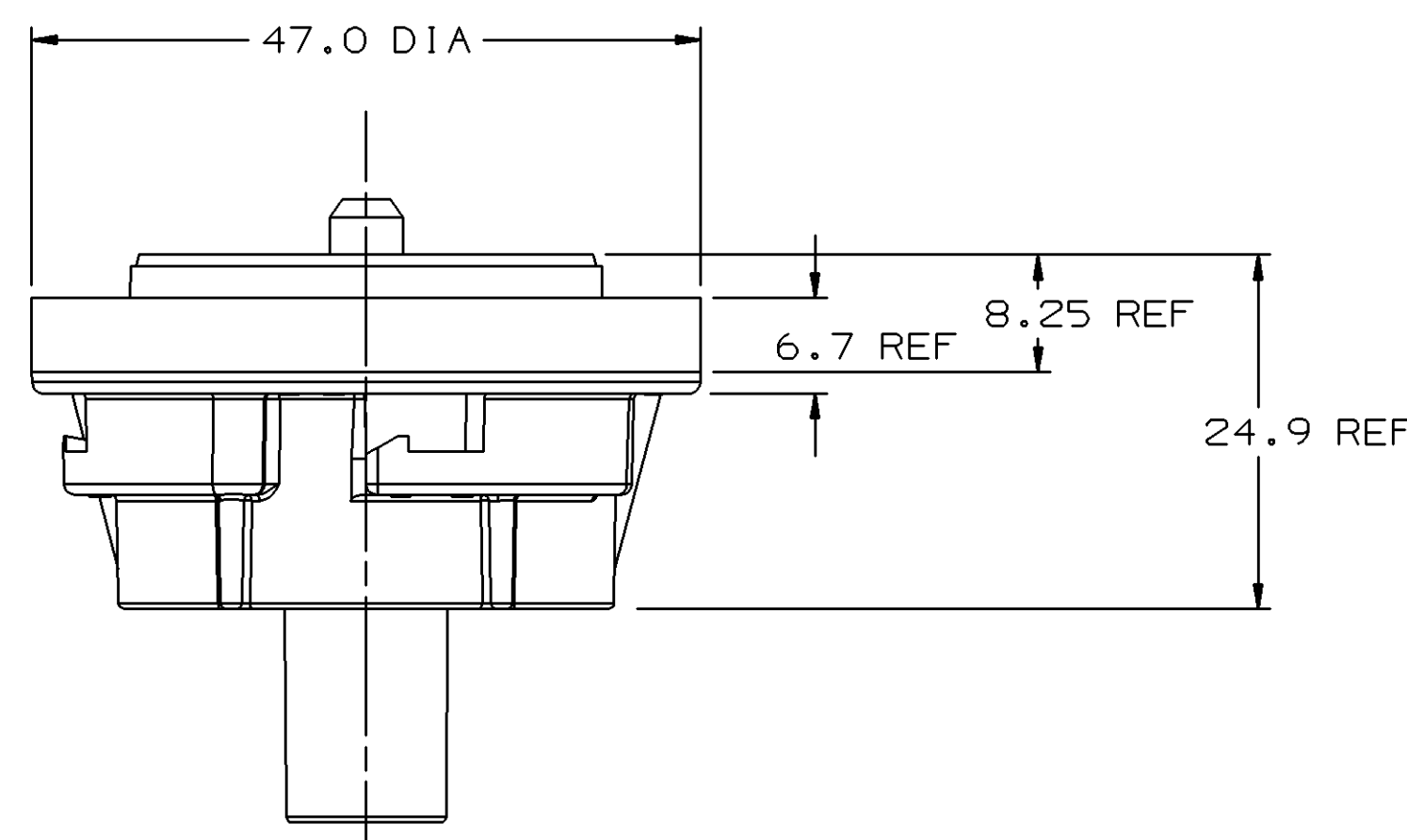


[illegible]

NOTES:

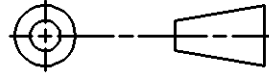
1. UNLESS OTHERWISE SPECIFIED AND/OR INDICATED:
DIMENSIONS ARE TO FACE OF VIEW SHOWN AND
AUTOMATICALLY ROUNDED BY COMPUTER FOR INSPECTION.
(SEE MATH MODEL FOR PRECISE DIMENSION)
FOR ALL OTHER DIMENSIONS NOT SHOWN BUT REQUIRED FOR
TOOL BUILD, SEE MATH MODEL FOR PRECISE TOOL PATH DATA
2. "O" DENOTES DIMENSIONS AND CHARACTERISTICS THAT ARE
IMPORTANT TO THE FUNCTION AND/OR PROCESSING OF THE PART
THAT HAVE SPECIAL ACCEPTANCE CRITERIA FOR PRODUCTION
APPROVAL. THIS DRAWING HAS 6 SNOWCONES.
3. MATING COMPONENTS:
CAVITIES TO ACCEPT 12124075 TERMINAL OR EQUIVALENT.
MAX. INSULATION CRIMP MUST BE LESS THAN 2.68 HIGH AND 2.72
WIDE.
THIS ASSEMBLY TO ACCEPT CABLE SEAL 12110009 OR EQUIVALENT.
4. TERMINAL POSITION ASSURANCE FEATURE IS ACHIEVED BY USE OF
PULL TO SEAT TERMINAL DESIGN.
5. BOLT TO BE RETAINED IN ASSEMBLY TO A MINIMUM OF 4.00 N.
6. BOLT MUST ROTATE IN ASSEMBLY AT A TORQUE OF LESS THAN 0.60 N-M
AFTER RETAINER IS ASSEMBLED.
7. WHEN PARTS ARE SHIPPED THEY MUST BE PACKED IN PLASTIC BAGS OR
SHIPPING CONTAINERS MUST BE LINE WITH PLASTIC LINERS. BAGS OR
LINERS MUST BE SEALED TO AVOID ENTRY OR FOREIGN MATTER.
8. SEALING CODE 3

DESIGN WILL PASS SALT FOG AND IMMERSION TEST
AFTER CONDITIONING AS SPECIFIED IN ESA-644
(WEATHER-PACK), ESA-710 (METRI-PACK), ESA-650
(UNDERHOOD MICRO-PACK), C-4006 (WORLD CONNECTOR),
ETC. - WHEN MATED TO MATING PART OR EQUIVALENT



OBSOLETE

PART NO
1216 2851

DRAWING TYPE PID		OTHER DRAWINGS AVAILABLE	
Uigraphics II THIRD ANGLE PROJECTION 		METRIC DIMENSIONS ARE IN MILLIMETERS UNLESS OTHERWISE SPECIFIED TOLERANCE UNLESS OTHERWISE SPECIFIED DECIMAL: ANGULAR $\pm 2^\circ$ ONE PLACE ± 0.3 TWO PLACE ± 0.15	
CODE NO	QC		
6900	-C-5122		
DWG DATE	15SE95	DES ALBERTO VITE 15SE95	
SCALE	2:1	DR ALBERTO VITE 15SE95	
REFERENCE NO		CKFCO. KOPCA	26SE95
		APPR T.E UHLIR	25OC95
		VOL CM ³	
MATERIAL SPEC			
SEE DRAWING			
NAME			
ASM CONN 12F M/P 150.2 P25			
PART NUMBER			SIZE
1216 2851			A1

Mouser Electronics

Authorized Distributor

Click to View Pricing, Inventory, Delivery & Lifecycle Information:

[Aptiv:](#)
[12162851](#)