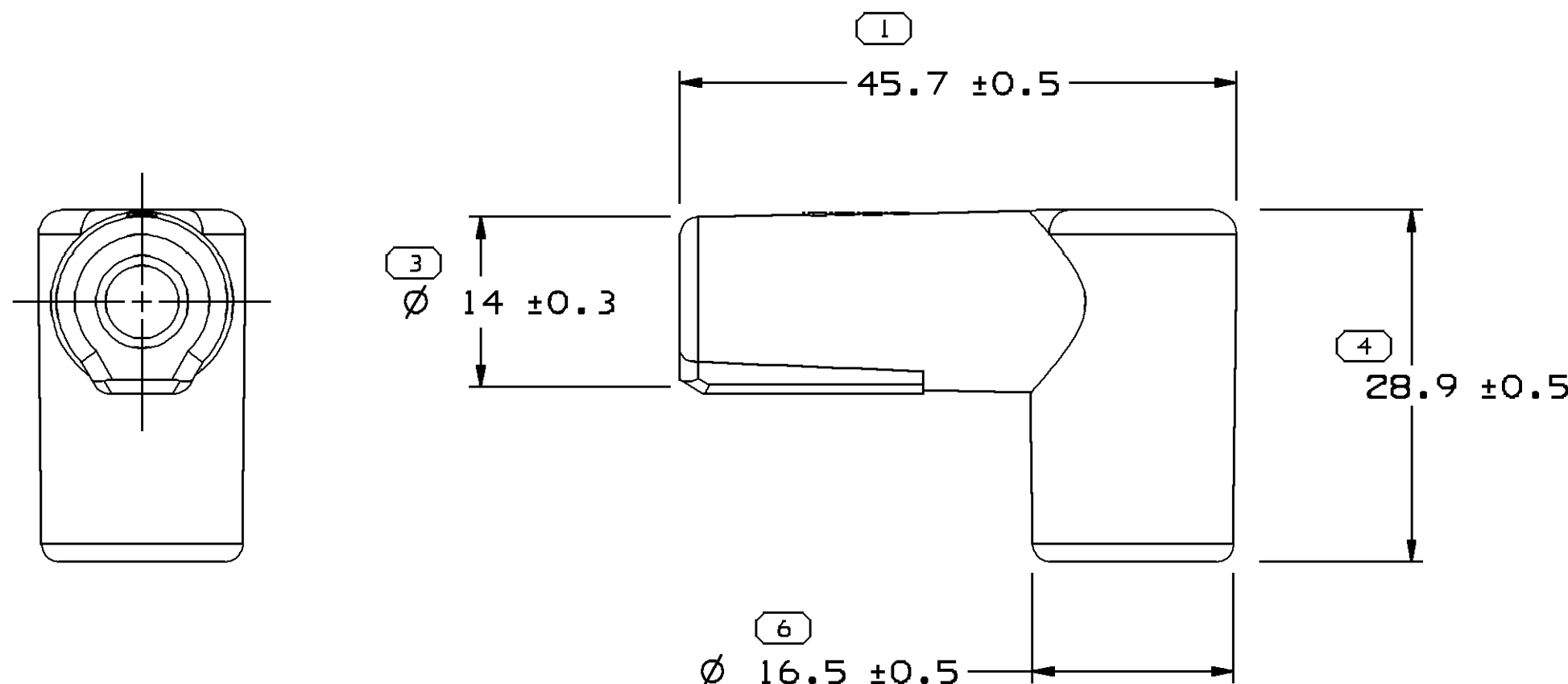



SCALE 1:1



#### NOTES:

1. NIPPLE TO MATE WITH DELCO-REMY H.E.I. DISTRIBUTOR CAP.
2. UNLESS OTHERWISE SPECIFIED AND/OR INDICATED:  
DIMENSIONS ARE TO FACE OF VIEW SHOWN AND  
AUTOMATICALLY ROUNDED BY COMPUTER FOR INSPECTION.  
(SEE MATH MODEL FOR PRECISE DIMENSIONS.) FOR ALL  
OTHER DIMENSIONS NOT SHOWN BUT REQUIRED FOR TOOL  
BUILD, SEE MATH MODEL FOR PRECISE TOOL PATH DATA.
3. TOOL CAVITY IDENTIFICATION SHOULD BE LOCATED AS CLOSE TO  
THE GATE AS POSSIBLE.



SYMBOL DEFINITION			MISSING NUMBERS
THE NUMBER INSIDE THE SYMBOL  CORRESPONDS TO THE NUMBER ON THE INSPECTION REPORT FOR THIS DRAWING/PART NUMBER	TOTAL NO. OF SYMBOLS ON DRAWING	5	2,5,
	LAST NO. USED	7	

DWG STATUS					ZONE	REVISION HISTORY	AUTH	DR	APVD 1	APVD 2
DATE	STG	REV	N/P	CHG						
05AU98	R	B	5	-		REDRAWN	980009	MRF	FKV	
04FE99	R	B	6	-		CHANGED MATERIAL SPEC; PART DWG REDRAWN	192503	JCH	JCH	
12MR03	R	B	07	-		UPDATED QUALIFICATION NOTE ON TQD; M4990002 WAS R0066249; UPDATED FORMAT	238307	PJC	PJC	JMW
21MR03	R	B	08	-		MEMBRANE NOTE ADDED TO TQD	238837	PJC	PJC	JMW
10AU04	R	C	-	-		M4992002 WAS M4990002	257749	PJC	PJC	RAT
07DE06	R	C1	-	-		MAT'L SPEC WAS M4992002, DEED LOGO WAS PED, REMOVED ONE NOTE AND RENUMBERED	287362	JOA	MRF	RAT
08JA07	R	D	-	-		MAT'L SPEC WAS M4990002	400048	MDH	FRG	RAT

# DELPHI

DELPHI PACKARD ELECTRIC SYSTEMS  
WARREN, OH

DATE	
DR	ANDY T. LE
APVD1	R.D. WALLACE
APVD2	J.H. GRAESER
APVD3	PAT J. COLONNA
APVD4	
APVD5	
SUBSTANCES OF CONCERN AND RECYCLED CONTENT PER DELPHI 10949001	
MATERIAL M4992002	
DRAWING NAME SLEV IGN BOOT BLK	
DRAWING NUMBER 12065765	
SIZE A2	SCALE 2:1
FRAME NO 1 OF 1	SHEET NO 1 OF 1
STG R	REV D
N/P -	

DWG TYPE PART DRAWING	
STYLE	
VOLUME (CM³) 8.312	DISTR CODE D
UNLESS OTHERWISE SPECIFIED THIS DOCUMENT IS IN ACCORDANCE WITH ASME Y14.5M-1994 AS AMENDED BY THE 3M GLOBAL DIMENSIONING AND TOLERANCING ADDENDUM - 1997. ALL GEOMETRIC TOLERANCES AND RELATED DATUMS APPLY RFS. RULE #1 (PERFECT FORM AT MMC) DOES NOT APPLY WHEN RELATIONSHIP BETWEEN FEATURES IS ESTABLISHED BY ORIENTATION OR LOCATION TOLERANCES. SEPARATE POSITION CALLOUTS MAY BE GAGED SEPARATELY, REGARDLESS OF DATUM REFERENCE. ALL DIMENSIONS ARE IN MILLIMETERS	
REFERENCE	
THIRD ANGLE PROJECTION 	DO NOT SCALE USE MATH DATA 

THE DIMENSION NUMBER(S) SHOWN BELOW INDICATE DIMENSIONS THAT ARE PROCESS SENSITIVE FOR PART PRODUCTION					
1	3	6			
DIMENSIONS ENCLOSED IN ( ) INDICATE REFERENCE DIMENSIONS AND NO TOLERANCE LIMITS ARE ESTABLISHED					
DIMENSIONAL RANGE (MM)					
FROM	0	> 20	> 30	> 70	> 100
TO	20	30	70	100	
TOLERANCE UNLESS OTHERWISE SPECIFIED					
	±0.15	±0.2	±0.3	±0.4	±0.5
ANGULAR TOLERANCE ±2°					

# Mouser Electronics

Authorized Distributor

Click to View Pricing, Inventory, Delivery & Lifecycle Information:

[Aptiv:](#)  
[12065765](#)