
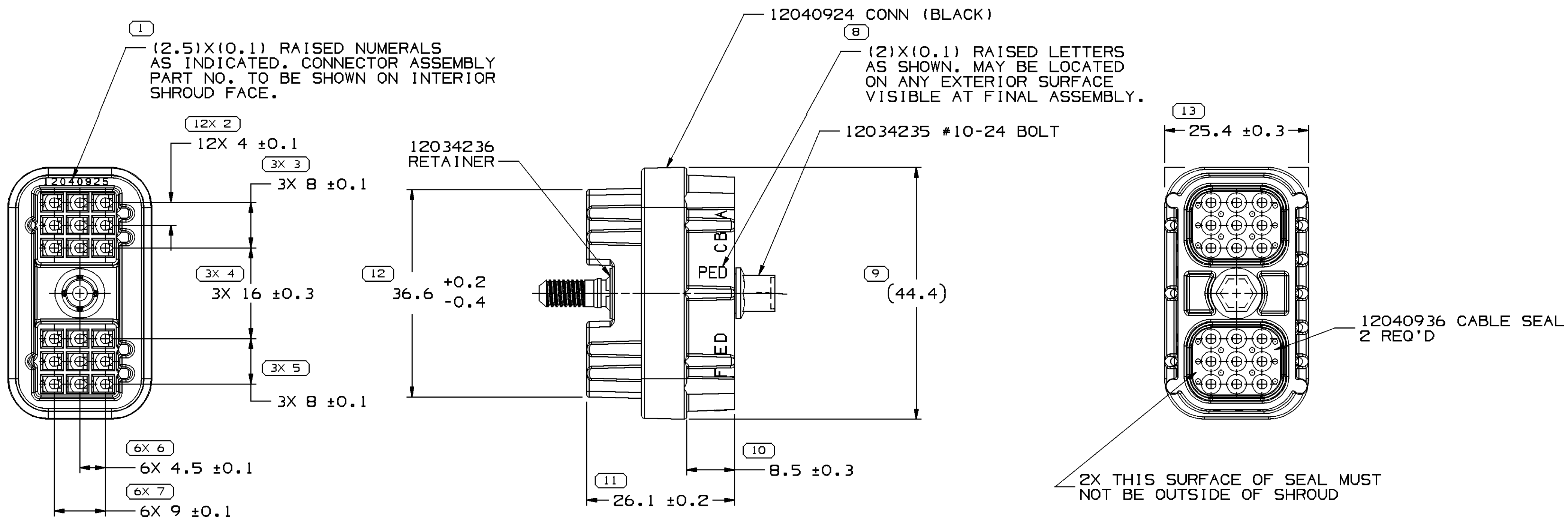
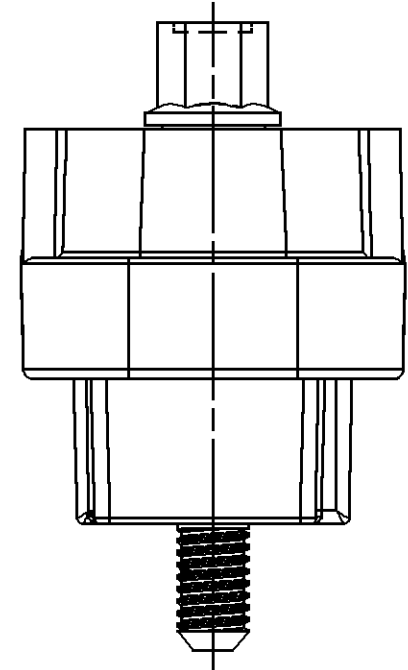


SYMBOL DEFINITION		
A DIMENSION WITHOUT AN INSPECTION REPORT SYMBOL  DOES NOT REQUIRE INSPECTION. IT MAY BE CONTROLLED ON THE INDIVIDUAL COMPONENT DRAWING.	TOTAL NO OF INSPECTIONS REQUIRED	40
	LAST NO. USED	13

MISSING SYMBOLS
NO MISSING SYMBOL NUMBER

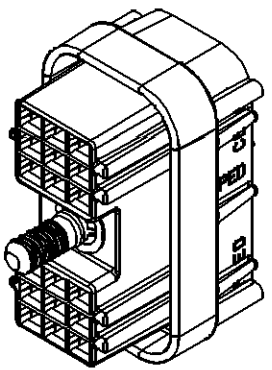
DWG STATUS					ZONE		REVISION HISTORY			AUTH	DR	APVD 1	APVD 2
DATE	STG	REV	N/P	CHG									
18AU04	R	02	AB	-			RESTRICTED			255795	JTV	FKV	MGR
110C05	R	02	AC	-			OBSOLETE			273210	JTZ	JAA	MGR
04MY06	R	02	AD	-			REVISED OBSOLETE NOTE			280007	GPS	FKV	EST



OBSOLETE
REPLACED BY
15492547

NOTES

- UNLESS OTHERWISE SPECIFIED AND/OR INDICATED: DIMENSIONS ARE TO FACE OF VIEW SHOWN AND AUTOMATICALLY ROUNDED BY COMPUTER FOR INSPECTION (SEE MATH MODEL FOR PRECISE DIMENSIONS). FOR ALL OTHER DIMENSIONS NOT SHOWN BUT REQUIRED FOR TOOL BUILD, SEE MATH MODEL FOR PRECISE TOOL PATH DATA.
- THIS PART ACCEPTS THE FOLLOWING COMPONENTS OR EQUIVALENT: CAVITIES TO ACCEPT 12047680 TERMINAL OR EQUIVALENT.
- REFERENCE MATING COMPONENTS OR EQUIVALENT: CONNECTOR 12040927
- THIS PART IS NOT CONTROLLED FOR AUTOMATIC FEEDING.
- BOLT TO BE RETAINED TO A MINIMUM 400 N FORCE.
- CONNECTOR TO BE ASSEMBLED TO MATING CONNECTOR WITH A TORQUE OF 0.8 N-M TO 1.5 N-M.
- BOLT MUST ROTATE IN CONNECTOR AT A TORQUE OF LESS THAN 0.6 N-M (5.3 INCH-POUNDS) AFTER RETAINER IS ASSEMBLED.
- SEALING CODE 3 - DESIGN WILL PASS SALT FOG AND IMMERSION TEST AFTER CONDITIONING AS SPECIFIED IN ESA-644 (WEATHER-PACK), ESA-710 (METRI-PACK), ESA-650 (UNDERHOOD MICRO-PACK), C-4006 (WORLD CONNECTOR), ETC WHEN MATED TO MATING PART OR EQUIVALENT



DWG TYPE	
PART DRAWING	
STYLE	
VOLUME (CM ³)	DISTR CODE
UNLESS OTHERWISE SPECIFIED	
THIS DOCUMENT IS IN ACCORDANCE WITH ASME Y14.5M-1994 AS AMENDED BY THE 2001 GLOBAL DIMENSIONING AND TOLERANCING ADDENDUM-2001. SEPARATE PATTERNS OF FEATURES MAY BE DATED SEPARATELY REGARDLESS OF DATUM REFERENCES.	
ALL DIMENSIONS ARE IN MILLIMETERS	
REFERENCE	
THIRD ANGLE PROJECTION	DO NOT SCALE
USE MATH DATA	UNIGRAPHICS

DIMENSIONAL RANGE (MM)												CHART ET	
FROM	> 0	> 20	> 30	> 70	> 100	> 150	> 200	> 250	> 300	> 400			
TO	20	30	70	100	150	200	250	300	400				
TOLERANCE UNLESS OTHERWISE SPECIFIED													
±0.15 ±0.2 ±0.3 ±0.4 ±0.5 ±0.6 ±0.8 ±1 ±1.2													
ANGULAR TOLERANCE ±2°													

DELPHI			
DELPHI PACKARD ELECTRIC SYSTEMS WARREN, OH			
DR	DATE		
APVD1 R.W. GLEASON	12AU83		
APVD2 E.M. BUNGO	15AU83		
APVD3 J.M. CHUPAK	17AU83		
APVD4			
APVD5			
SUBSTANCES OF CONCERN AND RECYCLED CONTENT PER DELPHI 10949001			
MATERIAL SEE DRAWING			
DRAWING NAME			
ASM CONN 18 F M/P 150 NAT SLD			
DRAWING NUMBER			
12040925			
SIZE	SCALE	FRAME NO	SHEET NO
A1	2:1	1 OF 1	1 OF 1
STG	REV	N/P	
R	02	AD	

Mouser Electronics

Authorized Distributor

Click to View Pricing, Inventory, Delivery & Lifecycle Information:

[Aptiv:](#)
[12040925](#)