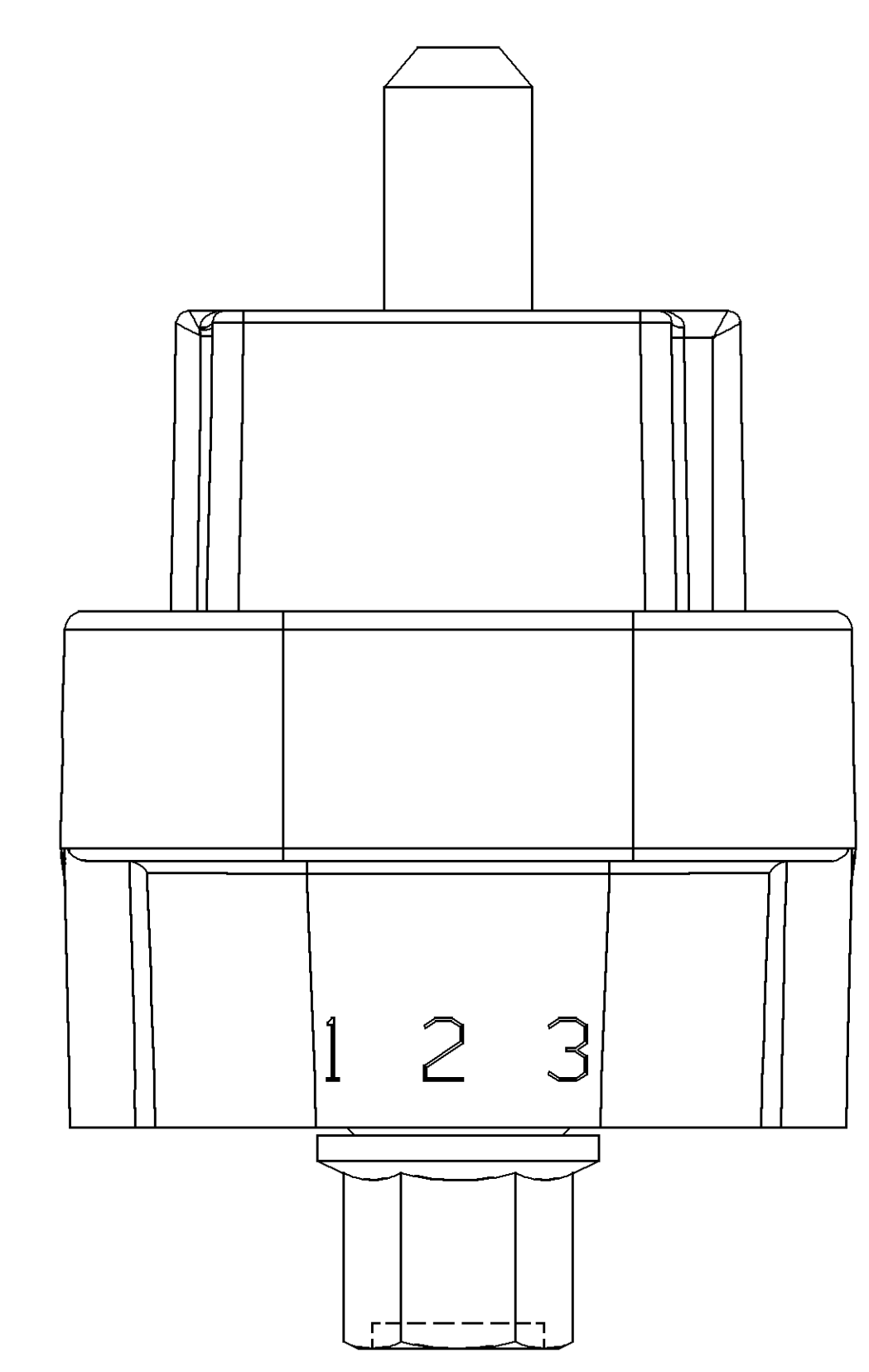
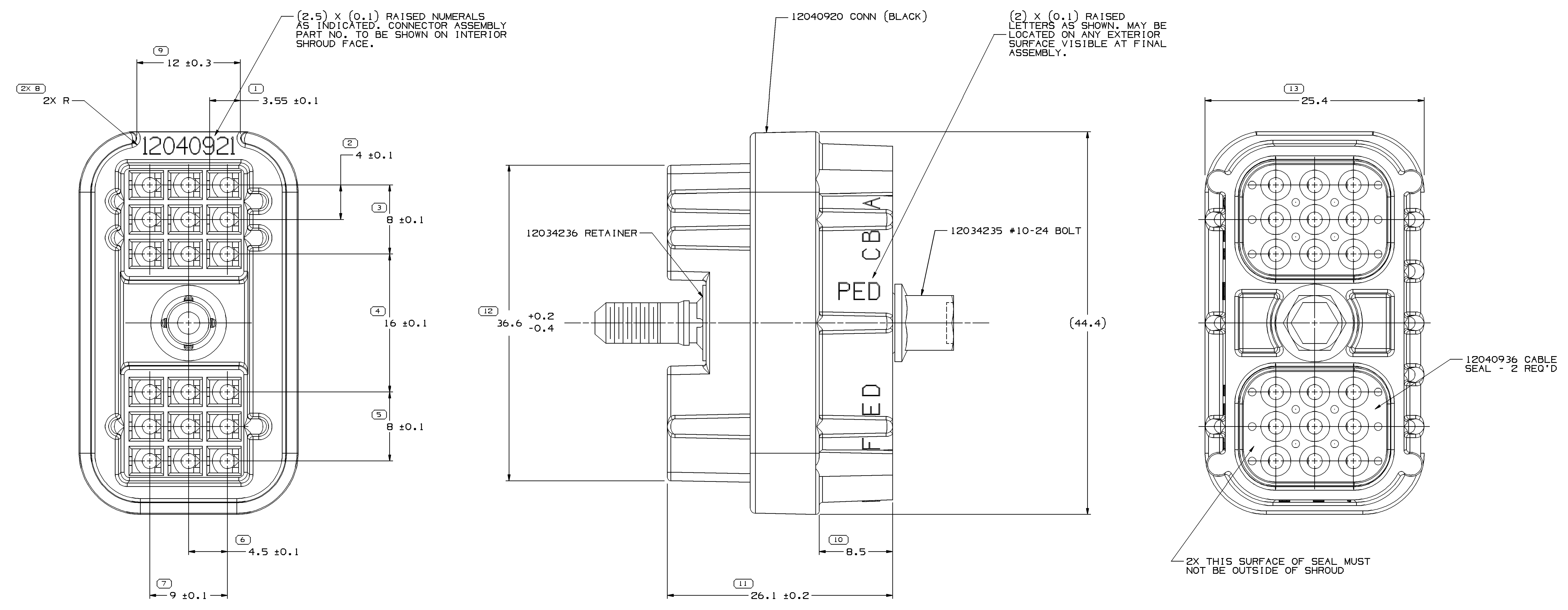
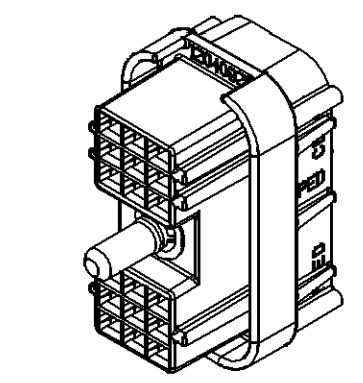


SYMBOL DEFINITION		MISSING SYMBOLS	
A DIMENSION WITHOUT AN INSPECTION REPORT SYMBOL DOES NOT REQUIRE INSPECTION. IT MAY BE CONTROLLED ON THE INDIVIDUAL COMPONENT DRAWING.	TOTAL NO OF INSPECTIONS REQUIRED	NO MISSING SYMBOL NUMBER	
	14		
	LAST NO. USED		
	13		

DWG STATUS				REVISION HISTORY				AUTH	DR	AP/VD
DATE	STG	REV	W/P	CHG	ZONE					
23A004	R	C4	-	-		CLEARED REV. COL. & REDRAWN TO PD1 AND ADDED RESTRICTED USAGE NOTE	255795	JAA	JVM	MGR
240C05	R	C5	-	-		OBSOLETE	273824	JTZ	JAA	MGR
12M06	R	C6	-	-		REINSTATED	280604	BPS	JAA	EST



- NOTES
- UNLESS OTHERWISE SPECIFIED AND/OR INDICATED: DIMENSIONS ARE TO FACE OF VIEW SHOWN AND AUTOMATICALLY ROUNDED BY COMPUTER FOR INSPECTION (SEE MATH MODEL FOR PRECISE DIMENSIONS). FOR ALL OTHER DIMENSIONS NOT SHOWN BUT REQUIRED FOR TOOL BUILD, SEE MATH MODEL FOR PRECISE TOOL PATH DATA.
 - CAVITIES TO ACCEPT 12047680 TERMINAL OR EQUIVALENT.
 - MATING CONNECTOR 12040923 OR EQUIVALENT.
 - THIS PART IS NOT CONTROLLED FOR AUTOMATIC FEEDING.
 - CONNECTOR TO BE ASSEMBLED TO MATING CONNECTOR WITH A TORQUE OF 0.8 NM TO 1.5 NM.
 - BOLT TO BE RETAINED TO A MINIMUM 400 N FORCE.
 - BOLT MUST ROTATE IN CONNECTOR AT A TORQUE OF LESS THAN 0.6 NM (5.3 INCH-POUNDS) AFTER RETAINER IS ASSEMBLED.
 - SEALING CODE 3 - DESIGN WILL PASS SALT FOG AND IMMERSION TEST AFTER CONDITIONING AS SPECIFIED IN ESA-644 (WEATHER-PACK), ESA-710 (METRI-PACK), ESA-650 (UNDERHOOD MICRO-PACK), C-4006 (WORLD CONNECTOR), ETC WHEN MATED TO MATING PART OR EQUIVALENT



DIMENSIONAL RANGE (MM)		SHORT ET	
FROM	TO		
> 0	> 30	> 70	> 100
> 30	> 70	> 100	> 150
> 70	> 100	> 150	> 200
> 100	> 150	> 200	> 250
> 150	> 200	> 250	> 300
> 200	> 250	> 300	> 400
TOLERANCE UNLESS OTHERWISE SPECIFIED:			
±0.15	±0.2	±0.3	±0.4
±0.5	±0.6	±0.8	±1
±1.2	±1.5	±2	±3
ANGULAR TOLERANCE 2°			

DELPHI
DELPHI PACK/ARD ELECTRIC SYSTEMS
WARREN, OH

DR	DATE
APV01 R.W. GLEASON	12AUB3
APV02 E.M. BUNGO	15AUB3
APV03 J.M. CHUPAK	17AUB3
APV04	
APV05	

UNLESS OTHERWISE SPECIFIED
THIS DOCUMENT IS IN ACCORDANCE WITH ASME Y14.5M-1994
AS MODIFIED BY THE M-SCALE DIMENSIONING AND TOLERANCE
PRACTICE (MSP) STANDARD. SEPARATE WRITINGS OF
FEATURES MAY BE BASED SEPARATELY PER REFERENCE OF DATUM
REFERENCES.

ALL DIMENSIONS ARE IN MILLIMETERS

REFERENCE

(N/A) PROCESS SENSITIVE DIMENSION

DIMENSIONS ENCLOSED IN () INDICATE
REFERENCE DIMENSIONS AND NO TOLERANCE
LIMITS ARE ESTABLISHED

THIRD ANGLE
PROJECTION

DO NOT
SCALE

USE MATH
DATA

DRAWING NAME
ASM CONN 18 F M/P 150 BLK SLD

DRAWING NUMBER
12040921

SIZE
A0

SCALE
5:1

FRAME NO
1 OF 1

SHEET NO
1 OF 1

REV
R

N/P
C6

Mouser Electronics

Authorized Distributor

Click to View Pricing, Inventory, Delivery & Lifecycle Information:

[Aptiv:](#)
[12040921](#)