

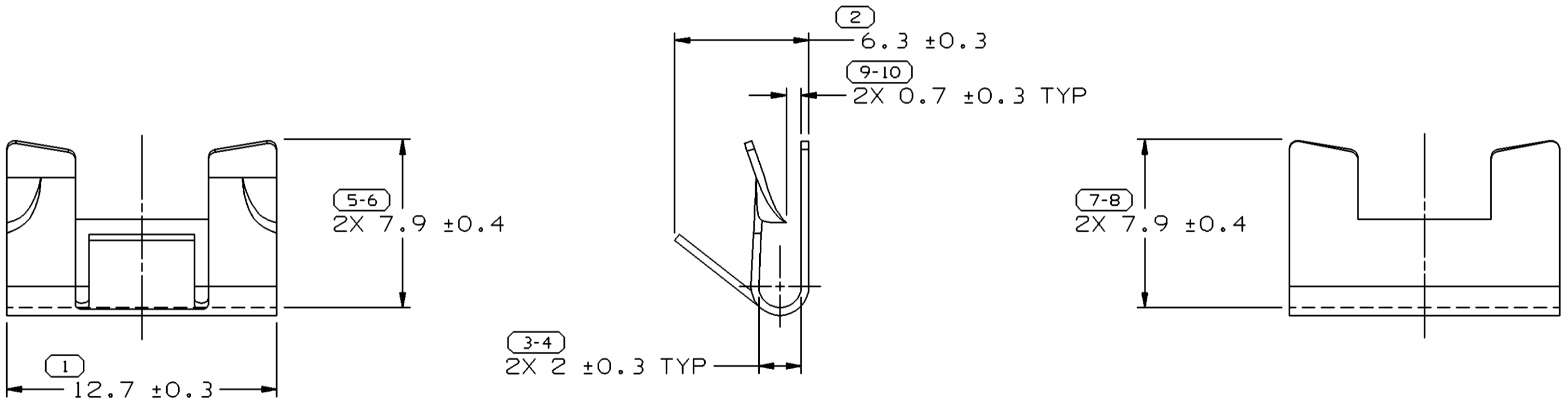
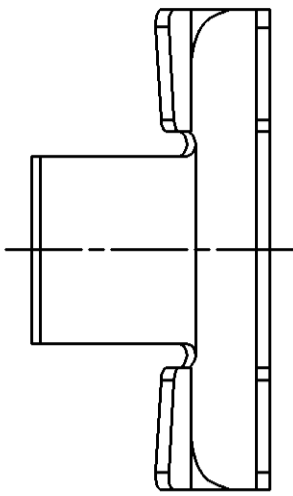
DO NOT SCALE

D

PART NO
12015512

DATE	SYM	REVISION RECORD	AUTH	DR	CK
23JN00	C1	REDRAWN TO PD AND ADDED 2X 0.7 ±0.3 TYP DIM			
			000009	APVGGI	
23JN00	C2	REMOVED 2X 2 ±0.3 TYP DIM	201313	APVGGI	
27OC05	C3	OBSOLETE	273677	GLGJAA	

SYMBOL DEFINITION		MISSING NUMBERS	
THE NUMBER INSIDE THE SYMBOL CORRESPONDS TO THE NUMBER ON THE INSPECTION REPORT FOR THIS DRAWING/PART NUMBER	TOTAL NO. OF SYMBOLS ON DRAWING	6	
	LAST NO. USED	10	



PART NO
12015512

NOTES

- UNLESS OTHERWISE SPECIFIED AND/OR INDICATED: DIMENSIONS ARE TO FACE OF VIEW SHOWN AND AUTOMATICALLY ROUNDED BY COMPUTER FOR INSPECTION (SEE MATH MODEL FOR PRECISE DIMENSIONS). FOR ALL OTHER DIMENSIONS NOT SHOWN BUT REQUIRED FOR TOOL BUILD, SEE MATH MODEL FOR PRECISE TOOL PATH DATA.
- MATE 1.65-1.35 THICKNESS.
- MATERIAL THICK 0.36 MM.

PROCESS NOTES

- HEAT TREAT TO ROCKWELL 45-50C.
- SURFACE FINISH ZINC PLATE 0.0025-0.008 THK.

OBSOLETE

PART DRAWING		THIRD ANGLE PROJECTION	
CODE NO 6901	QC	METRIC DIMENSIONS ARE IN MILLIMETERS UNLESS OTHERWISE SPECIFIED	
DWG DATE 12FE80	SCALE 5:1	DES	
REFERENCE NO 001,701	DR A. PALOMINO 13MR00	CK G.G. IZQUIERDO 14MR80	
	APPR ERIC TRACEY 27JN00	VOL CM ³	
MATERIAL SPEC SAE01064 STL		NAME CLIP U TYPE	
PART NUMBER 12015512		SIZE A2	

	PROCESS SENSITIVE DIMENSION	
DIMENSIONS ENCLOSED IN () INDICATE REFERENCE DIMENSIONS AND NO TOLERANCE LIMITS ARE ESTABLISHED		
DIMENSIONAL RANGE		
FROM	TO	TOLERANCE
0	12	> 12
TOLERANCE UNLESS OTHERWISE SPECIFIED		
		±0.1
		±0.2
ANGULAR TOLERANCE ± 2°		

Mouser Electronics

Authorized Distributor

Click to View Pricing, Inventory, Delivery & Lifecycle Information:

[Aptiv:](#)

[12015512](#)