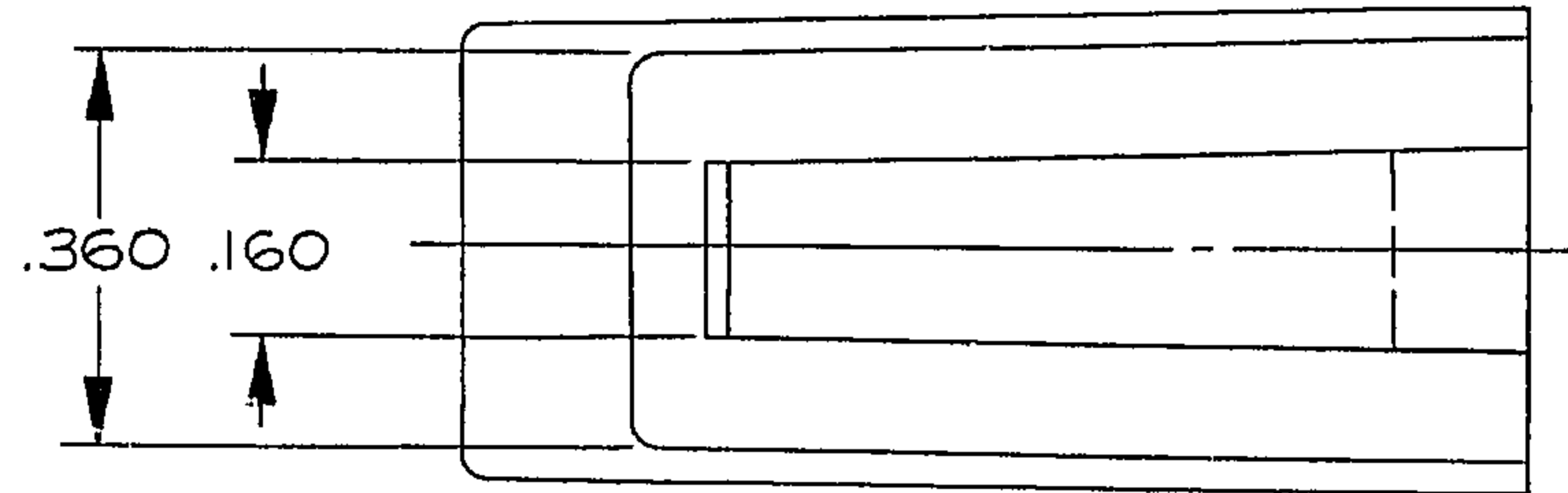
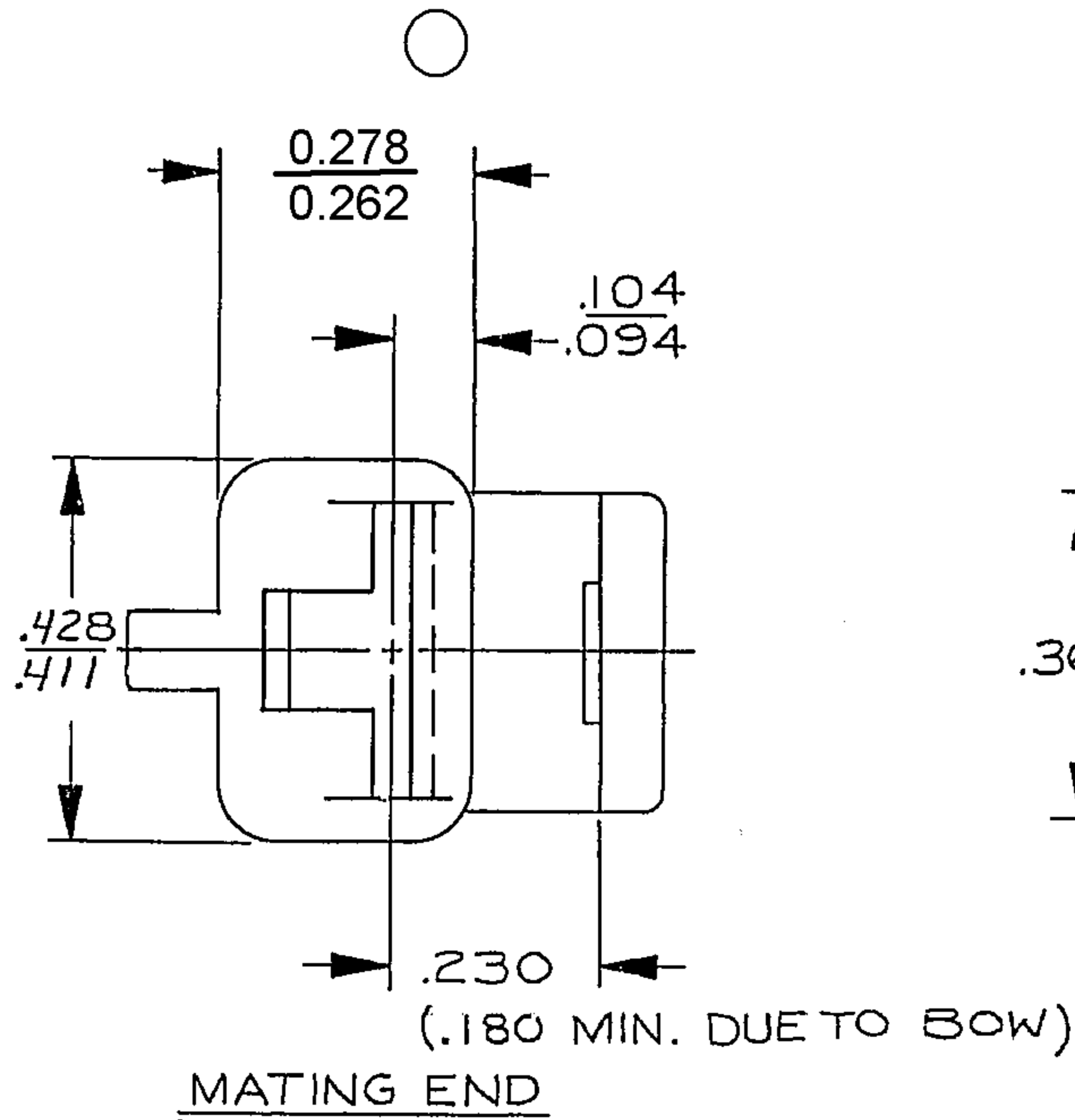
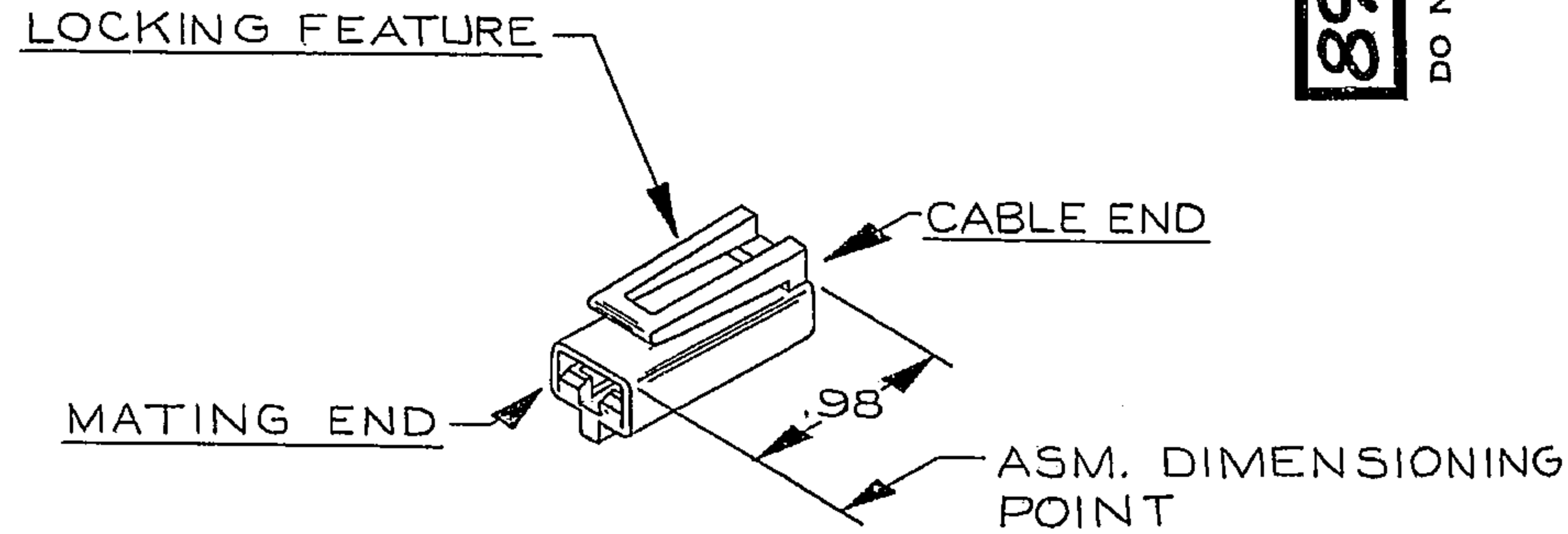


D THIS DRAWING AND DESIGN HEREON CONSTITUTES A PROPRIETARY DESIGN OF PACKARD ELECTRIC DIVISION AND IS NOT TO BE DUPLICATED OR REPRODUCED WITHOUT AUTHORITY OF PACKARD ELECTRIC DIVISION.

PACKARD ELECTRIC DIVISION
GENERAL MOTORS CORPORATION
WARREN, OHIO

891 7644

DO NOT SCALE



C03D1146

DATE	SYM.	REVISION RECORD	C/NNO.	DR.	CK.
9-11-74	D	RELEASED TO REV. "D" WITH NO PRIOR CHANGES TO KEEP MOLD AT SAME REV. LEVEL.	54605	WS	JM
12-3-74	E	REVISED	54243	Res	JM
2-4-75	—	.427/.411 WAS .419	54926	RL	JM
22JA01	E2	.094/.104 WAS .094, .428/.411 WAS .427/.411 & ADDED NOTE TO DIM .230	206183	ESF	RC
15AU08	E3	0.278 / 0.262 WAS .267	405764	TAI	SLS

CODE NO. 6900		TOLERANCE UNLESS OTHERWISE SPECIFIED	
QC -		DECIMAL:	
DWG. DATE 9-11-74		SCALE NONE	
EST. NO.		DR. <i>W. Steen</i> 9-11-74	
REFERENCE NO. 8917644 "D" SIZE		CK. <i>J. Mudrey</i> DATE 9-27-74	
MATERIAL SPEC. NYLON - TYPE 6,6 (LT. GRA.)		APPR. <i>Luber</i> DATE 9-12-74	
NAME CONN. BODY - 56 SERIES I FEMALE TERMINAL		APPR. <i>Luber</i> DATE 9-12-74	
PART NO. 891 7644		SIZE B	

891 7644
OUTLINE DRAWING

Mouser Electronics

Authorized Distributor

Click to View Pricing, Inventory, Delivery & Lifecycle Information:

[Aptiv:](#)

[08917644](#)