

MATERIAL SPECIFICATIONS

RECOMMENDED

BASE METAL - CDA-210, EXTRA SPRING TEMPER

TIN PLATING (WHERE APPLICABLE TO 125°C MAX CONTINUOUS USAGE): 0.005 ±0.0025 MM (200±100 μIN) ELECTROPLATED TIN.

USAGE OF PLATING TYPES OTHER THAN RECOMMENDED MUST BE APPROVED BY DELPHI PACKARD ELECTRIC SYSTEMS ENGINEERING.

MINIMUMS

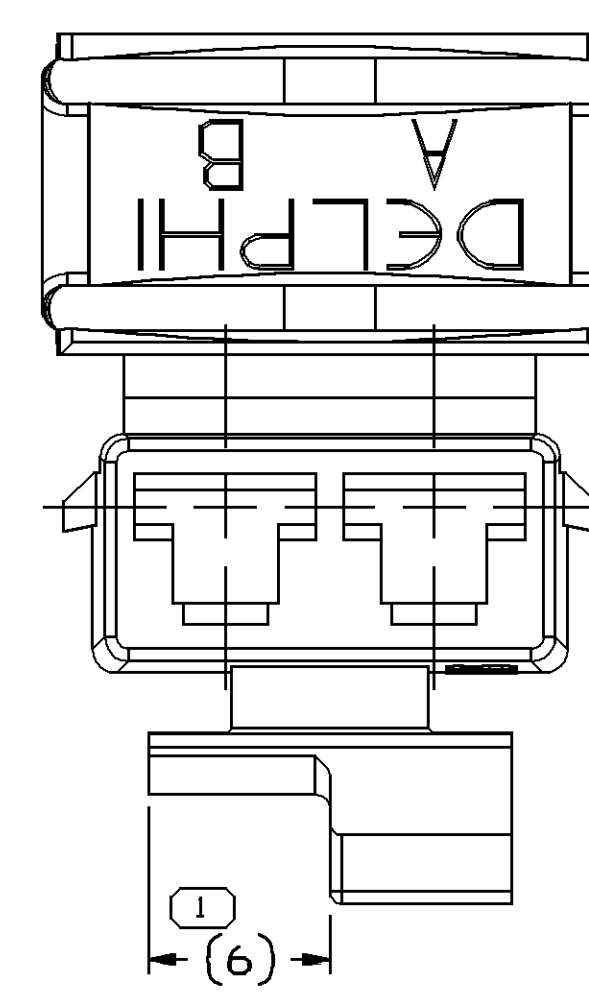
ELECTRICAL CONDUCTIVITY - ≥28% PREFERRED, ≥20% ACCEPTABLE IACS AT 20°C. USE OF A MATERIAL WITH CONDUCTIVITY <28% PREFERRED, <20% ACCEPTABLE IACS MUST BE APPROVED BY PACKARD ELECTRIC MATERIALS ENGINEERING.

TENSILE STRENGTH - 430-480 MPa PREFERRED, 407 MPa ACCEPTABLE

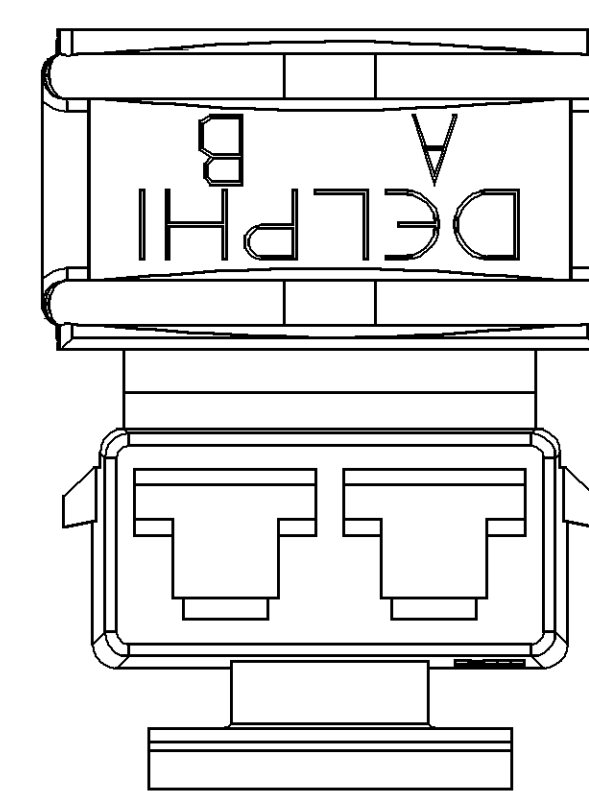
UNDERPLATING FOR TIN PLATING - FOR BASE MATERIALS CONTAINING 10% OR MORE ZINC, AN UNDERPLATE OF COPPER 0.005 ±0.0025 MM (100 μIN) MINIMUM THICK IS REQUIRED.

PROCESSING LUBRICANT - ANY PROCESSING LUBRICANT REMAINING ON TERMINALS MUST NOT VARNISH OR DEGRADE THE ELECTRICAL PERFORMANCE OF THE CONNECTION UP TO A MAXIMUM TEMPERATURE OF 150°C. PROCESSING LUBRICANTS MUST BE APPROVED BY DELPHI PACKARD ELECTRIC SYSTEMS ENGINEERING.

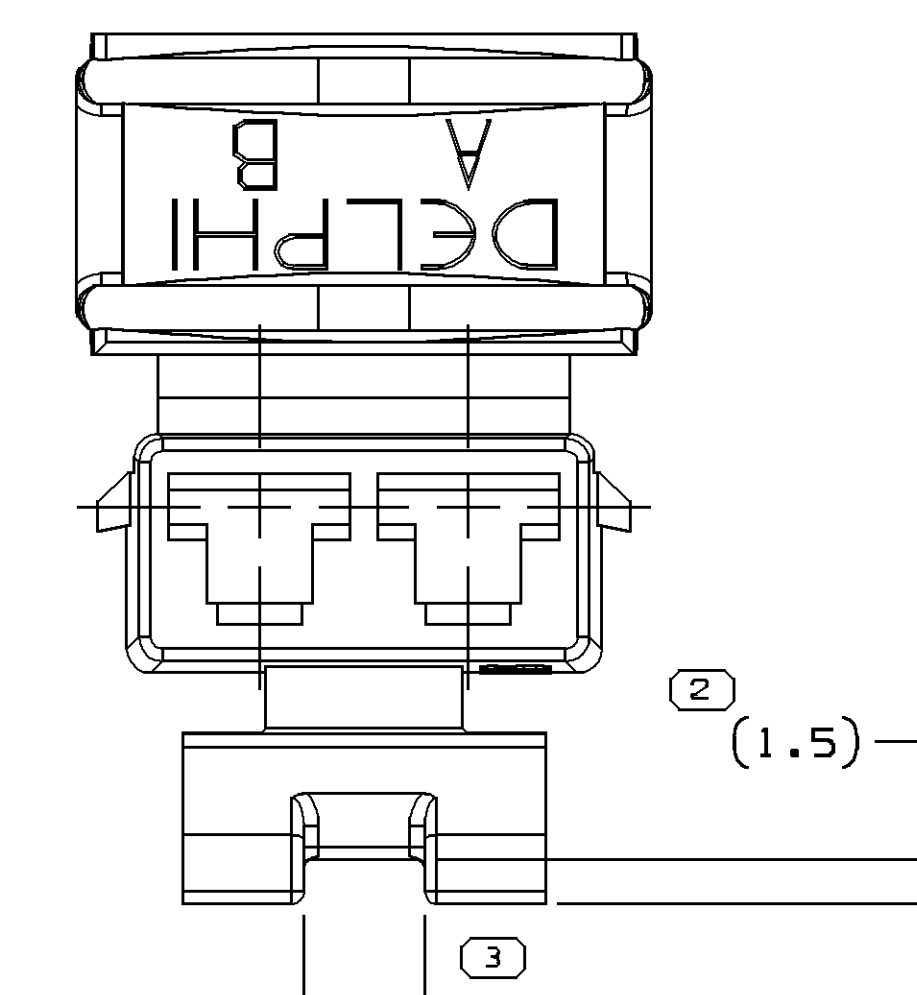
MATING BLADE INFORMATION



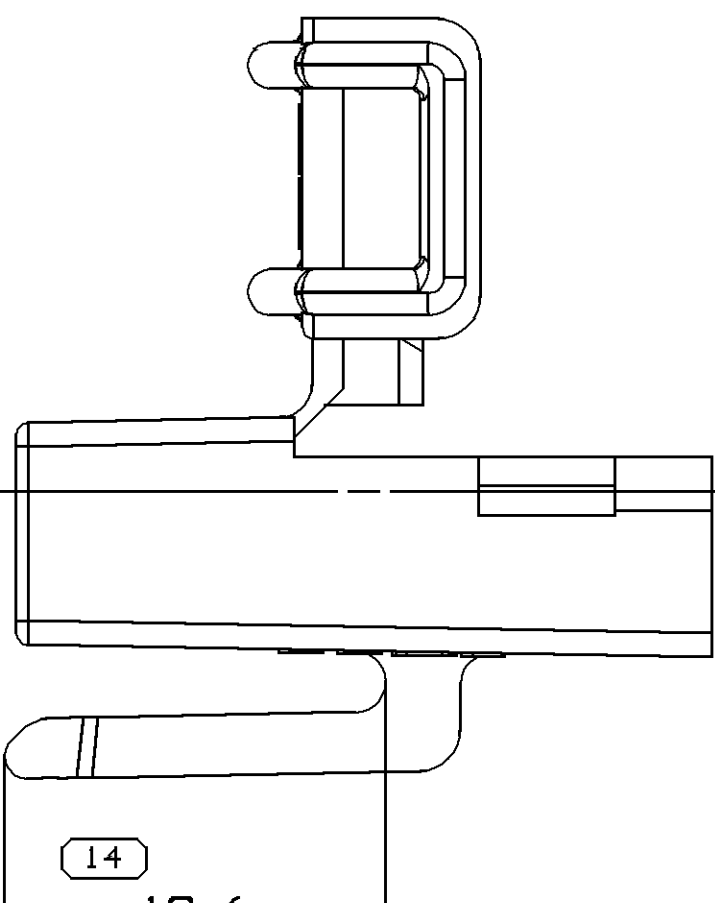
TYPE 101
SAME AS TYPE 102
EXCEPT AS SHOWN



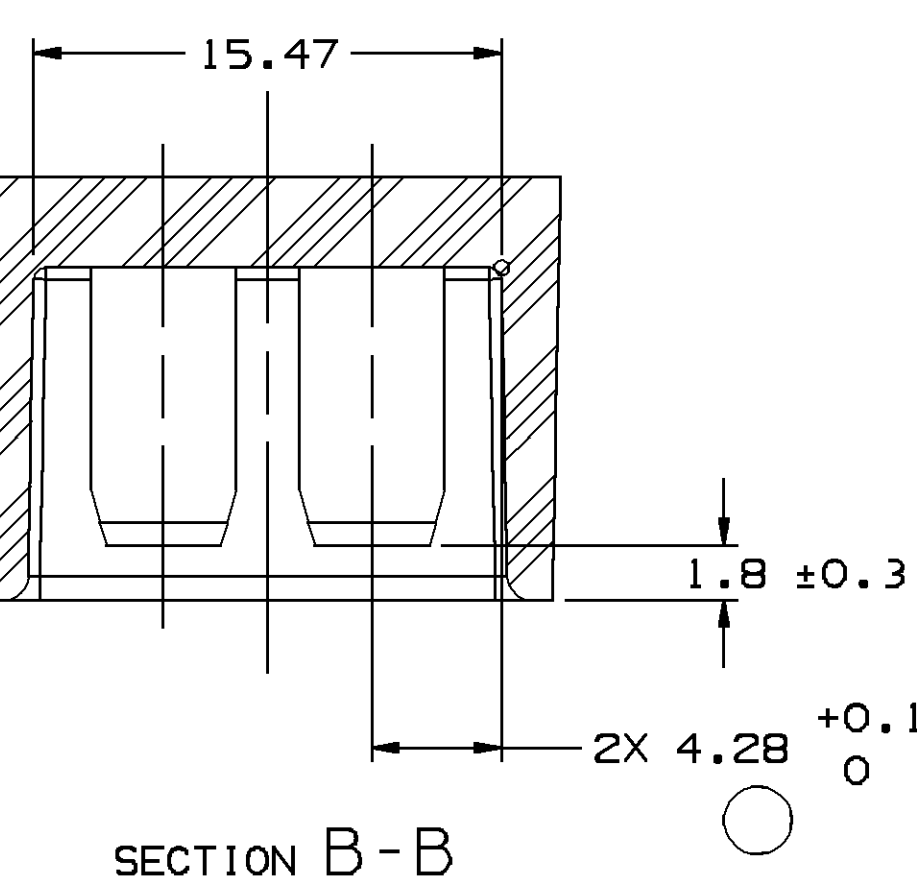
TYPE 104
SAME AS TYPE 102
EXCEPT AS SHOWN



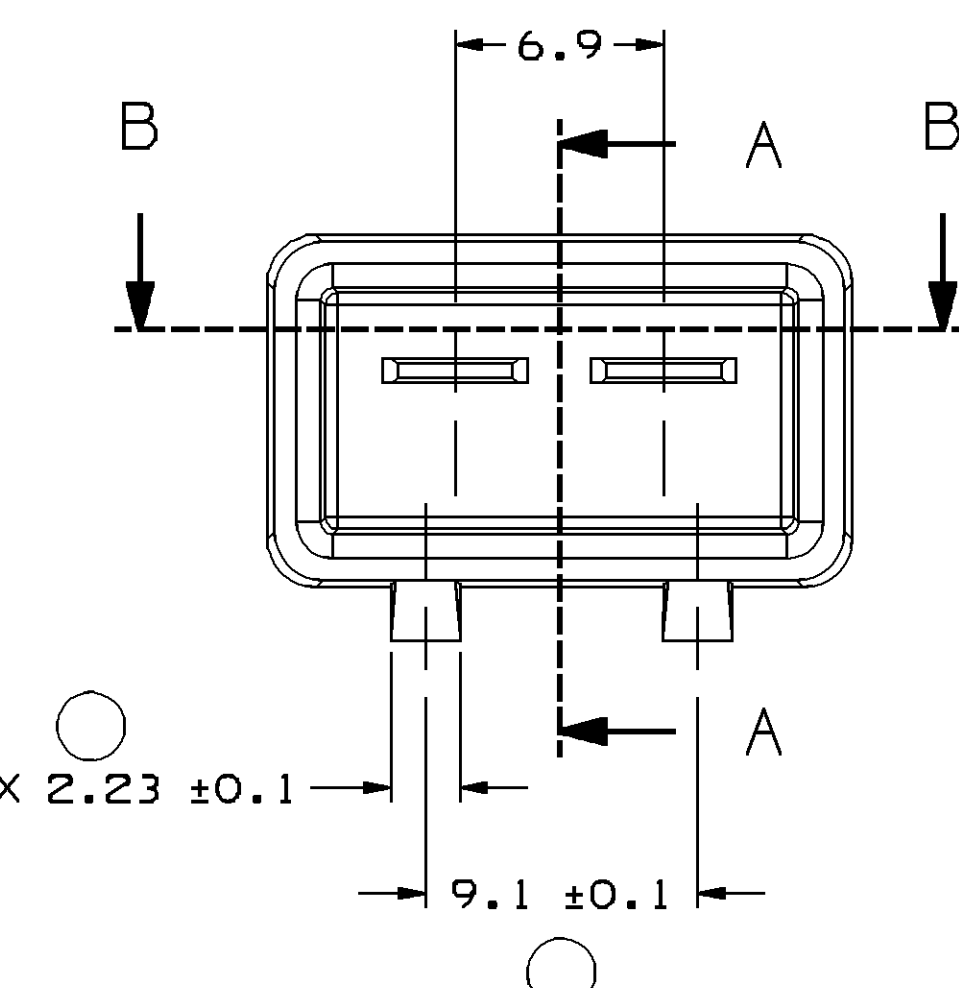
TYPE 103
SAME AS TYPE 102
EXCEPT AS SHOWN



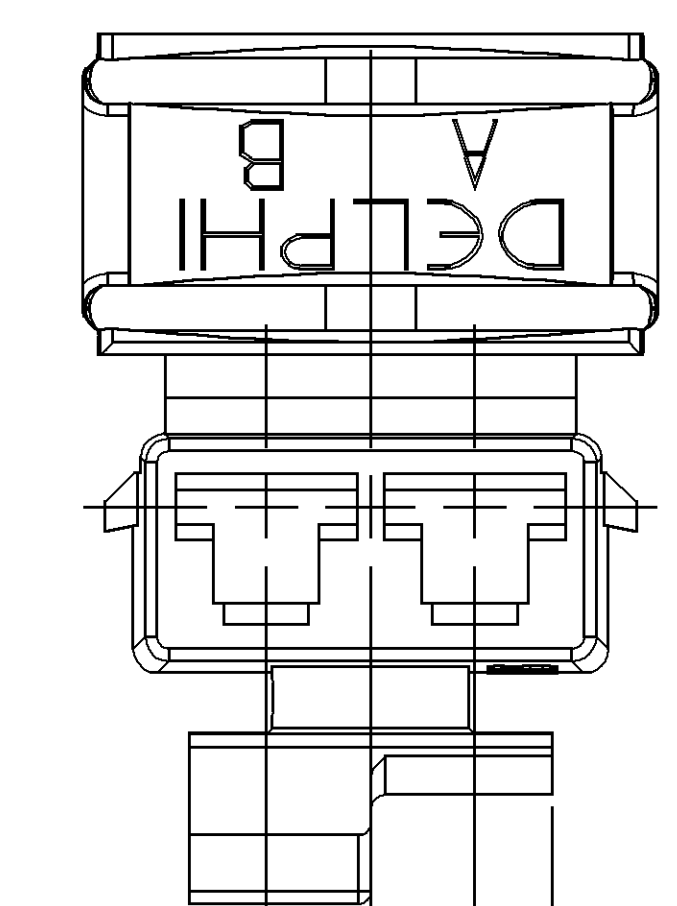
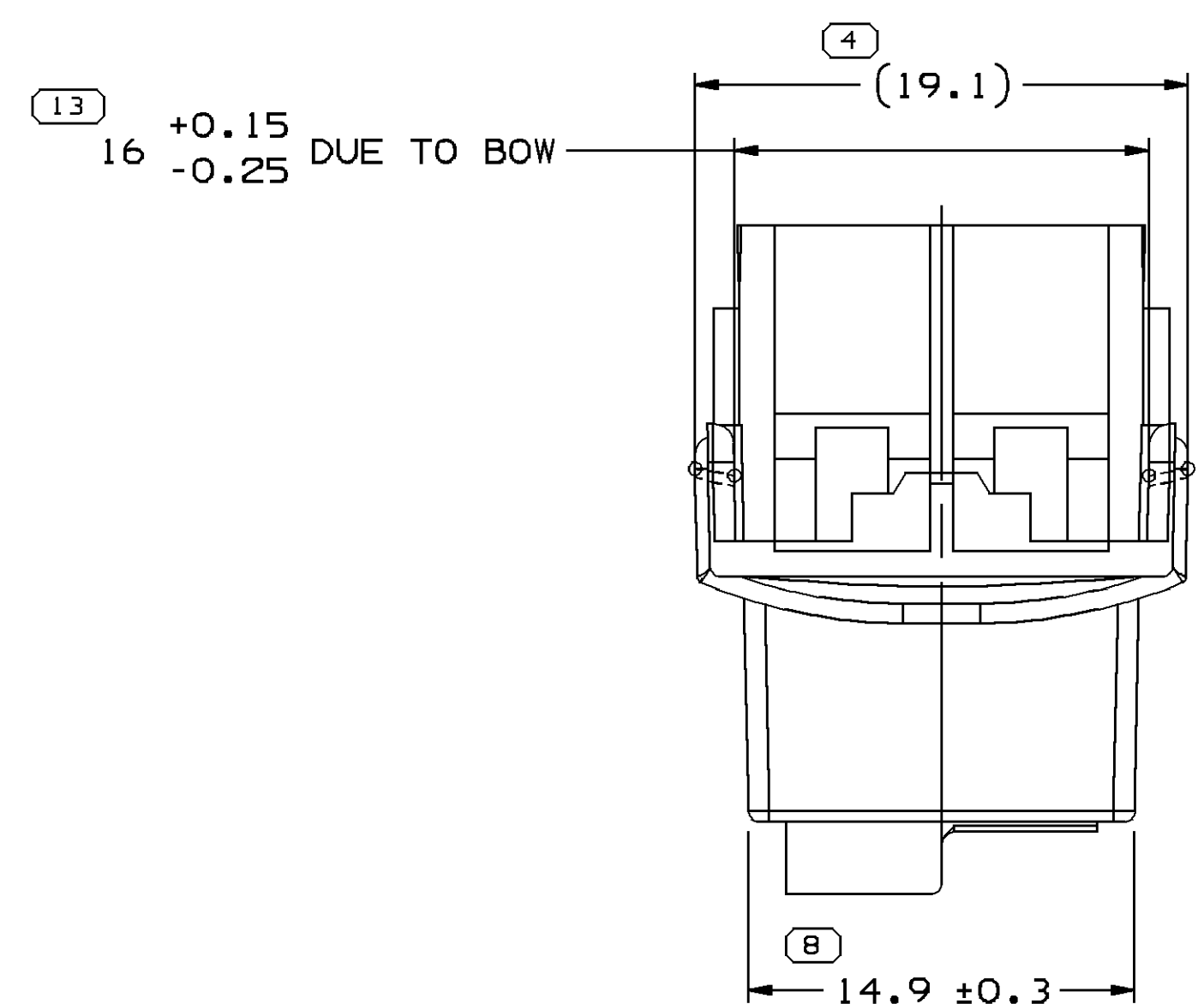
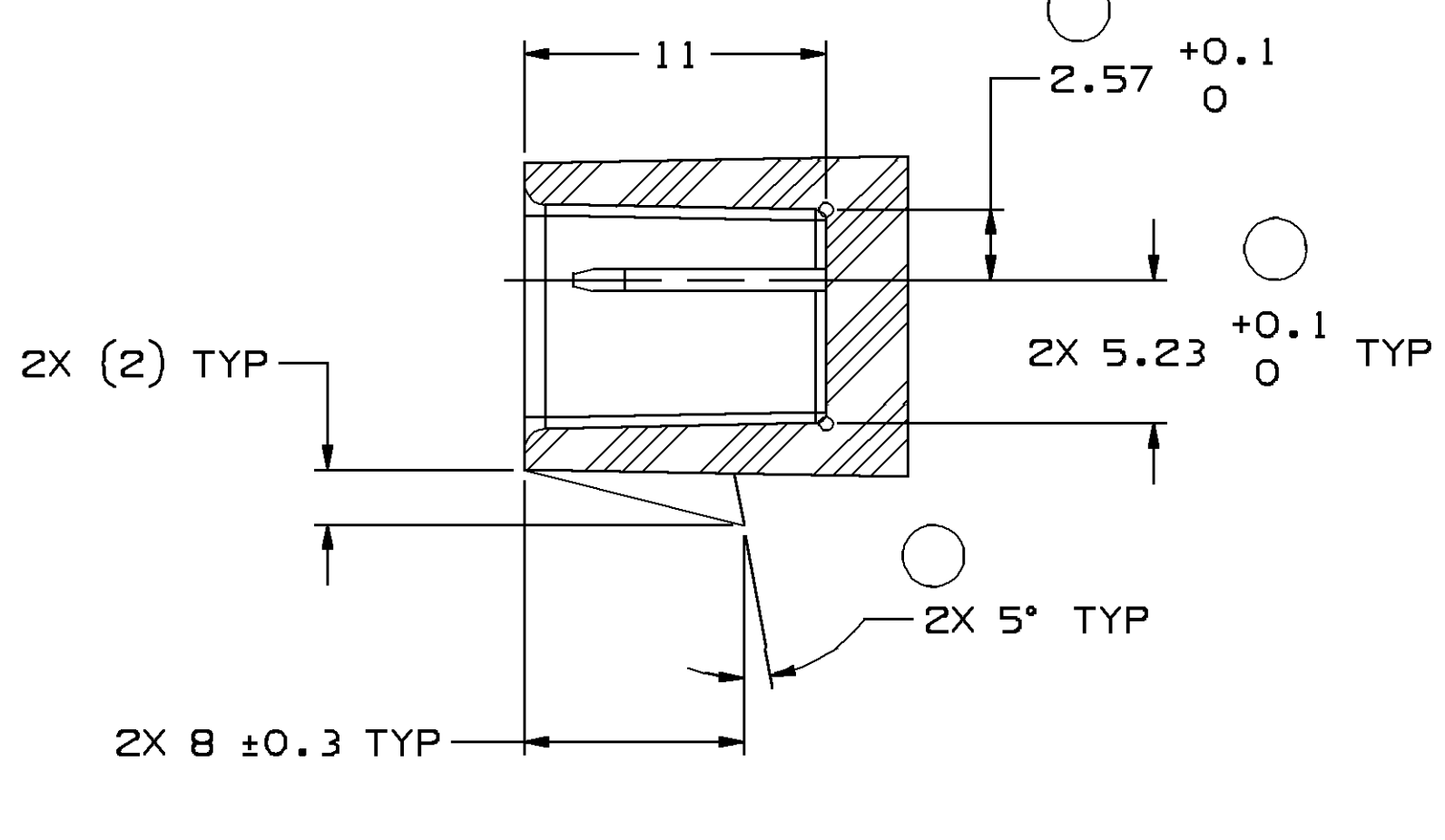
TYPE 104
SAME AS TYPE 102
EXCEPT AS SHOWN



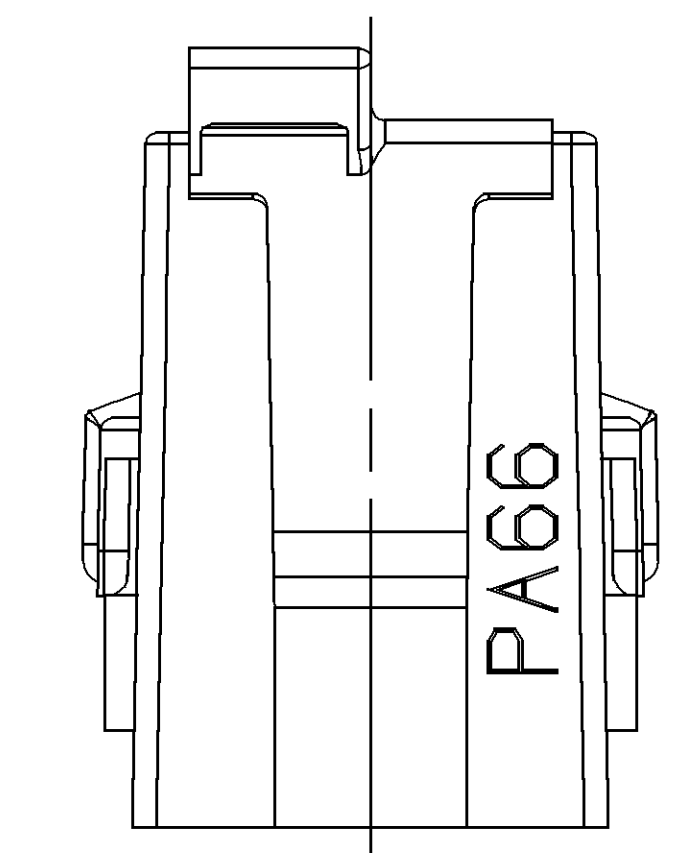
SECTION B-B



SECTION A-A



TYPE 102



PA66

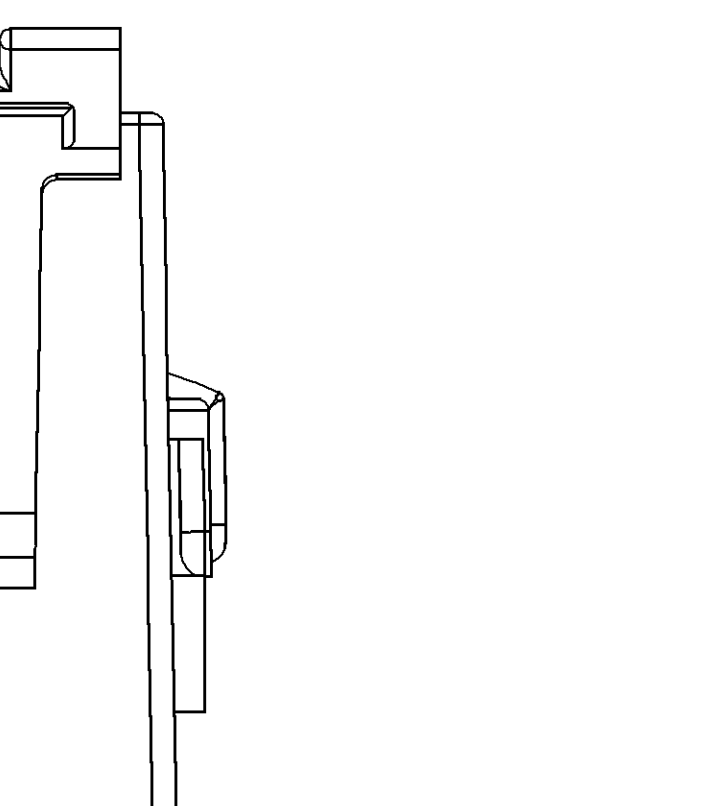
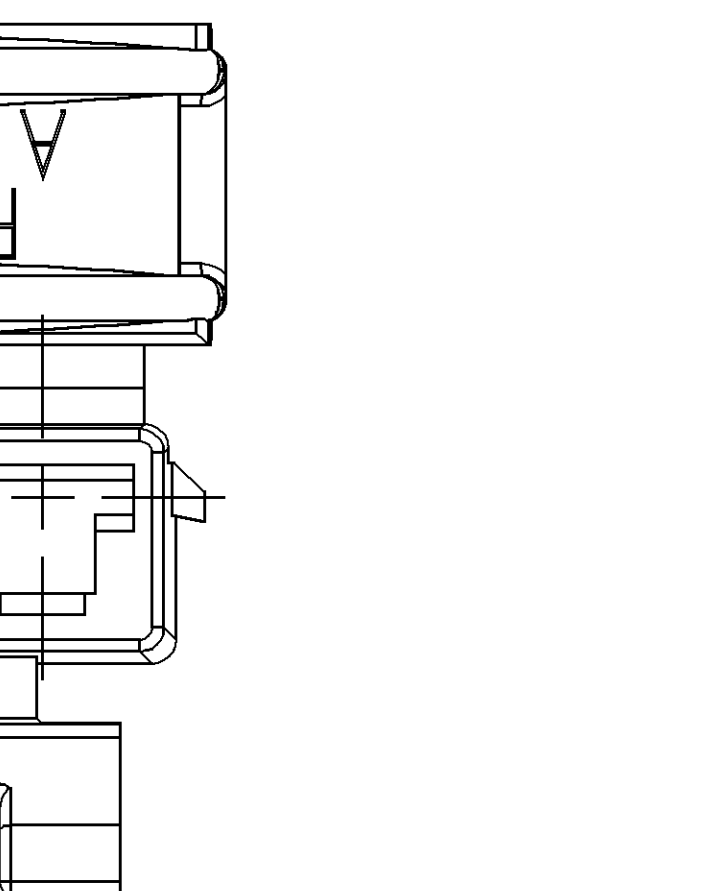
MATING CONNECTOR INFORMATION

NOTES:

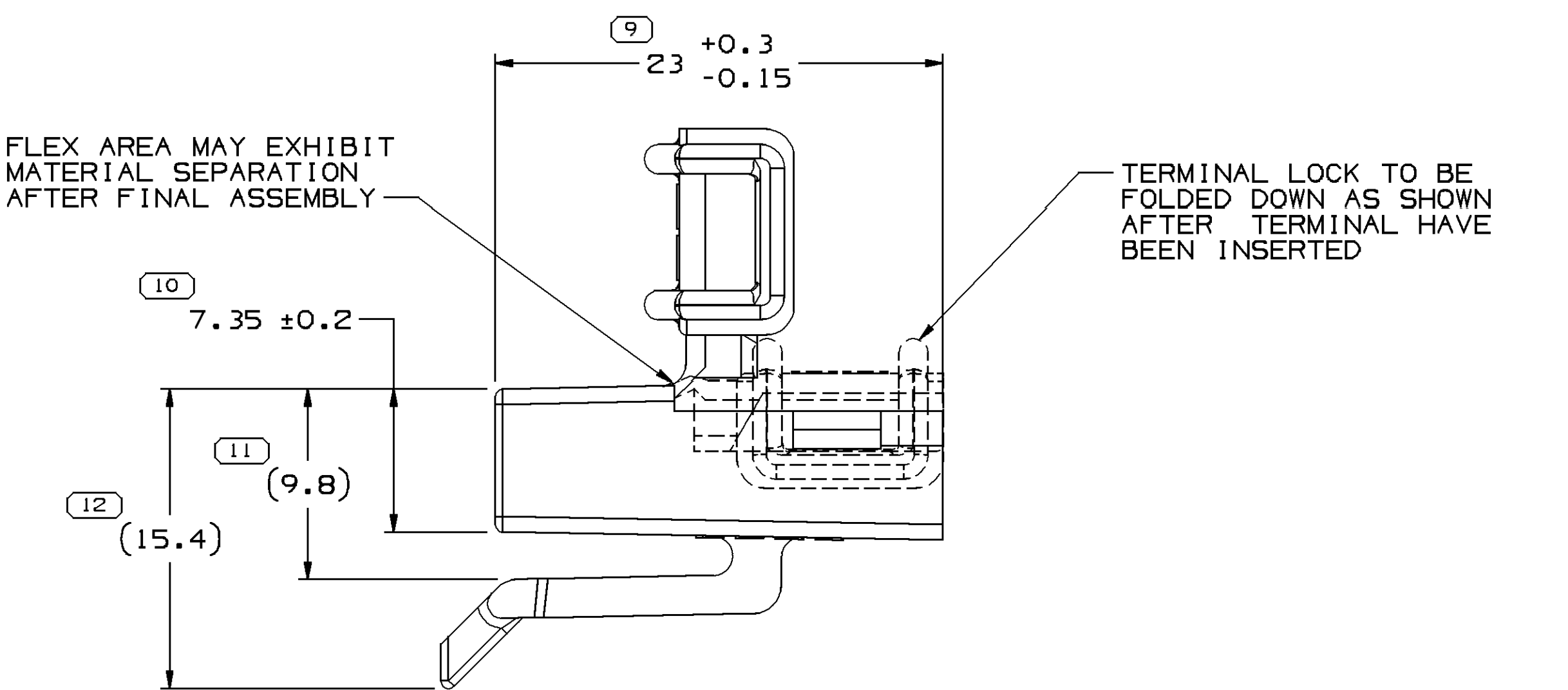
1. UNLESS OTHERWISE SPECIFIED AND/OR INDICATED: DIMENSIONS ARE TO FACE OF VIEW SHOWN AND AUTOMATICALLY ROUNDED BY COMPUTER FOR INSPECTION. (SEE MATH MODEL FOR PRECISE DIMENSION). ALL RADII 0.4

2. RECOMMENDED MATERIAL - GLASS FILLED NYLON OR POLYESTER.

3. WHEN USING THIS INFORMATION FOR A NEW DESIGN, REQUEST THE LATEST COPY OF THIS PRINT FROM PACKARD ELECTRIC DIVISION.



OPTIONAL CONSTRUCTION ALL TYPES



FLEX AREA MAY EXHIBIT MATERIAL SEPARATION AFTER FINAL ASSEMBLY

TERMINAL LOCK TO BE FOLDED DOWN AS SHOWN AFTER TERMINAL HAVE BEEN INSERTED

NOTES:

1. UNLESS OTHERWISE SPECIFIED AND/OR INDICATED:

DIMENSIONS ARE TO FACE OF VIEW SHOWN AND AUTOMATICALLY ROUNDED BY COMPUTER FOR INSPECTION (SEE MATH MODEL FOR PRECISE DIMENSIONS). FOR ALL OTHER DIMENSIONS NOT SHOWN BUT REQUIRED FOR TOOL BUILD, SEE MATH MODEL FOR PRECISE TOOL PATH DATA.

2. MATERIAL RECYCLING CODE PER ISO 11469, (2.3)X(0.1) CHARACTERS AS SHOWN TO BE LOCATED ON ANY EXTERIOR SURFACE. OPTIONAL CONSTRUCTION TO BE NO MATERIAL RECYCLING CODE.

3. THIS PRODUCT IS NOT CATEGORIZED AS AN APPEARANCE ITEM, MINOR IMPERFECTIONS INCLUDING, BUT NOT LIMITED TO, FLOW MARKS, COLOR BLEMISHES, GATE VESTIGES, AND SOFT FLASH THAT DO NOT AFFECT THE FIT, FORM, OR FUNCTION OF THE PART ARE PERMISSIBLE PER NAP 4.10-1B.

4. (2.3)X(0.1) DELPHI CORPORATE BRAND TO BE LOCATED ON ANY EXTERIOR SURFACE, PREFERABLY VISIBLE AT FINAL ASSEMBLY. OPTIONAL CONSTRUCTION FOR EXISTING TOOLING MAY BE "PED" OR NO LOGO.

5. FOR APPLICATION DATA SEE THE INDIVIDUAL APPLICATION DRAWINGS.

PART NO	REV	N/P	STATUS	TYPE	MATERIAL SPECIFICATION AND COLOR	VOLUME CM ³
15410810	01	AC	-	104	POLYAMIDE COMPOUND GRAY LT	1.767
12052110	08	AB	-	101	POLYAMIDE COMPOUND CREAM	1.808
12052109	07	-	-	102	POLYAMIDE COMPOUND BLUE	1.808
12020556	07	-	-	103	POLYAMIDE COMPOUND BLACK	1.834

DATE	STO	REV	N/P	CHG	ZONE
26F02	R	05	-	-	-
04S03	R	06	-	-	-
21JL05	R	07	-	-	-
15MR06	R	08	-	-	-
26JA07	R	09	-	-	-
06MR09	R	10	-	-	-

DATE	STO	REV	N/P	CHG	ZONE
26F02	R	05	-	-	-
04S03	R	06	-	-	-
21JL05	R	07	-	-	-
15MR06	R	08	-	-	-
26JA07	R	09	-	-	-
06MR09	R	10	-	-	-

DATE	STO	REV	N/P	CHG	ZONE
26F02	R	05	-	-	-
04S03	R	06	-	-	-
21JL05	R	07	-	-	-
15MR06	R	08	-	-	-
26JA07	R	09	-	-	-
06MR09	R	10	-	-	-

DATE	STO	REV	N/P	CHG	ZONE
26F02	R	05	-	-	-
04S03	R	06	-	-	-
21JL05	R	07	-	-	-
15MR06	R	08	-	-	-
26JA07	R	09	-	-	-
06MR09	R	10	-	-	-

DATE	STO	REV	N/P	CHG	ZONE
26F02	R	05	-	-	-
04S03	R	06	-	-	-
21JL05	R	07	-	-	-
15MR06	R	08	-	-	-
26JA07	R	09	-	-	-
06MR09	R	10	-	-	-

DATE	STO	REV	N/P	CHG	ZONE
26F02	R	05	-	-	-
04S03	R	06	-	-	-
21JL05	R	07	-	-	-
15MR06	R	08	-	-	-
26JA07	R	09	-	-	-
06MR09	R	10	-	-	-

DATE	STO	REV	N/P	CHG	ZONE
26F02	R	05	-	-	-
04S03	R	06	-	-	-
21JL05	R	07	-	-	-
15MR06	R	08	-	-	-
26JA07	R	09	-	-	-
06MR09	R	10	-	-	-

DATE	STO	REV	N/P	CHG	ZONE
26F02	R	05	-	-	-
04S03	R	06	-	-	-
21JL05	R	07	-	-	-
15MR06	R	08	-	-	-
26JA07	R	09	-	-	-
06MR09	R	10	-	-	-

DATE	STO	REV	N/P	CHG	ZONE
26F02	R	05	-	-	-
04S03	R	06	-	-	-
21JL05	R	07	-	-	-
15MR06	R	08	-	-	-
26JA07	R	09	-	-	-
06MR09	R	10	-	-	-

DATE	STO	REV	N/P	CHG	ZONE
26F02	R	05	-	-	-
04S03	R	06	-	-	-
21JL05	R	07	-	-	-
15MR06	R	08	-	-	-
26JA07	R	09	-	-	-
06MR09	R	10	-	-	-

DATE	STO	REV	N/P	CHG	ZONE
26F02	R	05	-	-	-
04S03	R	06	-	-	-
21JL05	R	07	-	-	-
15MR06	R	08	-	-	-
26JA07	R	09	-	-	-
06MR09	R	10	-	-	-

DATE	STO	REV	N/P	CHG	ZONE
26F02	R	05	-	-	-
04S03	R	06	-	-	-
21JL05	R	07	-	-	-
15MR06	R	08	-	-	-
26JA07	R	09	-	-	-
06MR09	R	10	-	-	-

DATE	STO	REV	N/P	CHG	ZONE
26F02	R	05	-	-	-
04S03	R	06	-	-	-
21JL05	R	07	-	-	-
15MR06	R	08	-	-	-
26JA07	R	09	-	-	-
06MR09	R	10	-	-	-

DATE	STO	REV	N/P	CHG	ZONE
26F02	R	05	-	-	-
04S03	R	06	-	-	-
21JL05	R	07	-	-	-
15MR06	R	08	-	-	-
26JA07	R	09	-	-	-
06MR09	R	10	-	-	-

DATE	STO	REV	N/P	CHG	ZONE
26F02	R	05	-	-	-
04S03	R	06	-	-	-
21JL05	R	07	-	-	-
15MR06	R	08	-	-	-
26JA07	R	09	-	-	-
06MR09	R	10	-	-	-

DATE	STO	REV	N/P	CHG	ZONE
26F02	R	05	-	-	-
04S03	R	06	-	-	-
21JL05	R	07	-	-	-
15MR06	R	08	-	-	-
26JA07	R	09	-	-	-
06MR09	R	10	-	-	-

DATE	STO	REV	N/P	CHG	ZONE
26F02	R	05	-	-	-
04S03	R	06	-	-	-
21JL05	R	07	-	-	-
15MR06	R	08	-	-	-
26JA07	R	09	-	-	-
06MR09	R	10	-	-	-

DATE	STO	REV	N/P	CHG	ZONE
26F02	R	05	-	-	-
04S03	R	06	-	-	-
21JL05	R	07	-	-	-
15MR06	R	08	-	-	-
26JA07	R	09	-	-	-
06MR09	R	10	-	-	-

DATE	STO	REV	N/P	CHG	ZONE
26F02	R	05	-	-	-
04S03	R	06	-	-	-
21JL05	R	07	-	-	-
15MR06	R	08	-	-	-
26JA07	R	09	-	-	-
06MR09	R	10	-	-	-

DATE	STO	REV	N/P	CHG	ZONE
26F02	R	05	-	-	-
04S03	R	06	-	-	-
21JL05	R	07	-	-	-
15MR06	R	08	-	-	-
26JA07	R	09	-	-	-
06MR09	R	10	-	-	-

DATE	STO	REV	N/P	CHG	ZONE
26F02	R	05	-	-	-
04S03	R	06	-	-	-
21JL05	R	07	-	-	-
15MR06	R	08	-	-	-
26JA07	R	09	-	-	-
06MR09	R	10	-	-	-

DATE	STO	REV	N/P	CHG	ZONE
26F02	R	05	-	-	-
04S03	R	06	-	-	-
21JL05	R	07	-	-	-
15MR06	R	08	-	-	-
26JA07	R	09	-	-	-
06MR09	R	10	-	-	-

DATE	STO	REV	N/P	CHG	ZONE
26F02	R	05	-	-	-
04S03	R	06	-	-	-
21JL05	R	07	-	-	-
15MR06	R	08	-	-	-
26JA07	R	09	-	-	-
06MR09	R	10	-	-	-

DATE	STO	REV	N/P	CHG	ZONE
26F02	R	05	-	-	-
04S03	R	06	-	-	-
21JL05	R	07	-	-	-
15MR06	R	08	-	-	-
26JA07	R	09	-	-	-
06MR09	R	10	-	-	-

DATE	STO	REV	N/P	CHG	ZONE
26F02	R	05	-	-	-
04S03	R	06	-	-	-
21JL05	R	07	-	-	-
15MR06	R	08	-	-	-
26JA07	R	09	-	-	-
06MR09	R	10	-	-	-

DATE	STO	REV	N/P	CHG	ZONE
26F02	R	05	-	-	-
04S03	R	06	-	-	-
21JL05	R	07	-	-	-
15MR06	R	08	-	-	-
26JA07	R	09	-	-	-
06MR09	R	10	-	-	-

DATE	STO	REV	N/P	CHG	ZONE
26F02	R	05	-	-	-
04S03	R	06	-	-	-
21JL05	R	07	-	-	-
15MR06	R	08	-	-	-
26JA07	R	09	-	-	-
06MR09	R	10	-	-	-

13		PROCESS SENSITIVE DIMENSION	
DIMENSIONS ENCLOSED IN () INDICATE REFERENCE DIMENSIONS AND NO TOLERANCE LIMITS ARE ESTABLISHED			
(MM)		CHART E1	
> 30	> 70	> 100	> 150
> 100	> 150	> 200	> 250
> 200	> 250	> 300	> 300
400	400	400	400
TOLERANCE UNLESS OTHERWISE SPECIFIED			
±0.3	±0.4	±0.5	±0.6
±0.8	±1	±1.2	

THIRD ANGLE
PROJECTION

Mouser Electronics

Authorized Distributor

Click to View Pricing, Inventory, Delivery & Lifecycle Information:

[Aptiv:](#)

[12020556](#) [12020556-B](#)