

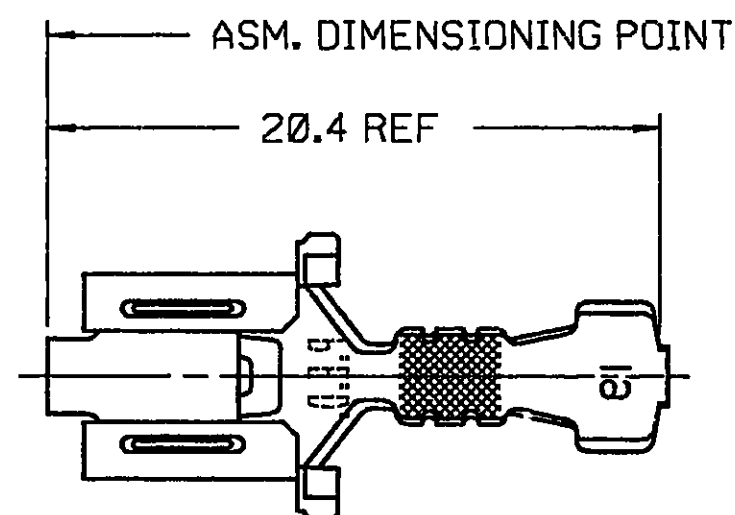
THIS DRAWING AND DESIGN HEREON CON-
STITUTES A PROPRIETARY DESIGN OF
PACKARD ELECTRIC DIVISION AND IS NOT
TO BE DUPLICATED OR REPRODUCED WITH-
OUT AUTHORITY OF PACKARD ELECTRIC
DIVISION.

DO NOT SCALE

PACKARD ELECTRIC DIVISION
GENERAL MOTORS CORPORATION
WARREN, OHIO

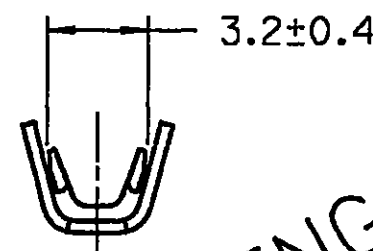
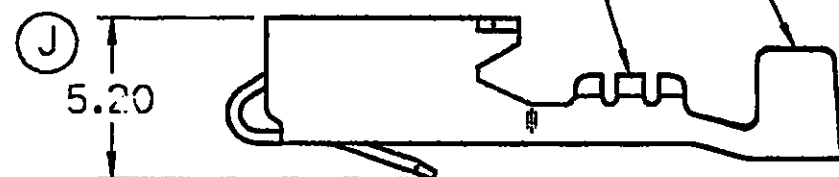
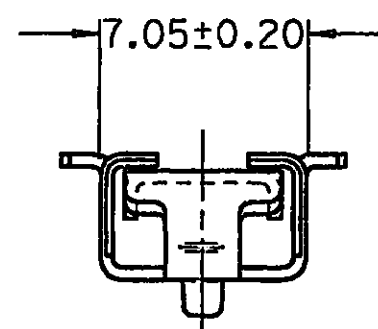
0-
97A
17V
61P
5V(2)

PART NO. 1201 5864



INSULATION WINGS FOR
3.12 MM MAX. INSUL. DIA.

CONDUCTOR WINGS FOR
0.8-0.5 MM² CABLE —



WARNING
GEOMETRY MAY NOT BE
DRAWN TO SCALE

[illegible]

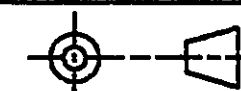
PED/INTERGRAPH

```

FILE      bdew
SPEC:     /usr2/bdew/5864.plt
          01-SEP-1993 20:54

```

THIRD ANGLE PROJECTION



METRIC

**DIMENSIONS ARE IN MILLIMETERS
UNLESS OTHERWISE SPECIFIED.**

CODE NO.

6900

TOLERANCE UNLESS
OTHERWISE SPECIFIED
DECIMAL:

ANGULAR $\pm 2^\circ$

Q.C.

DWG. 06JN80
DATE

SCALE
NONE

DR.

EST. NO.

F. HESTON

DATE	12JA85
------	--------

REFERENCE NO.

SHEET #1

APPR.	
-------	--

12015135 "E" SIZE

APPR. R.D. KEARNS

DATE	31JA85
------	--------

MATERIAL SPEC.

0.406 THK. TIN BRASS-TIN PLATED

NAME _____

TERM F M/P 630 SPL

PART NO.

1201 5864

SIZE

B

OUTLINE DRAWING

PACKARD ELECTRIC

Mouser Electronics

Authorized Distributor

Click to View Pricing, Inventory, Delivery & Lifecycle Information:

[Aptiv:](#)

[12015864](#) [12015864-MR](#)