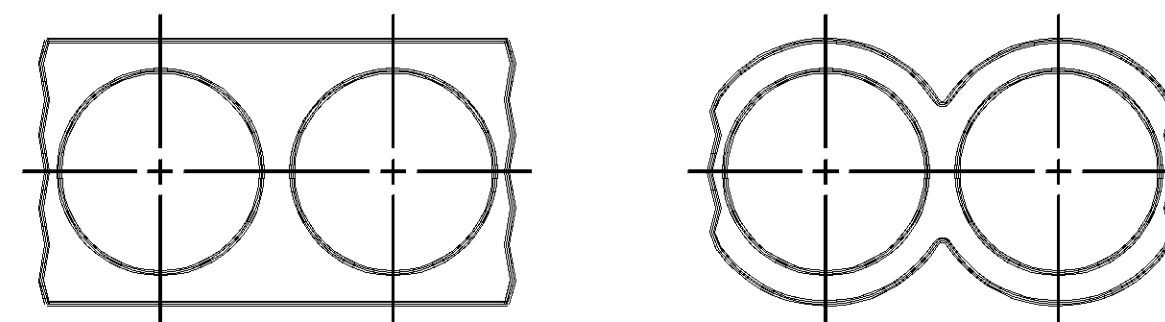
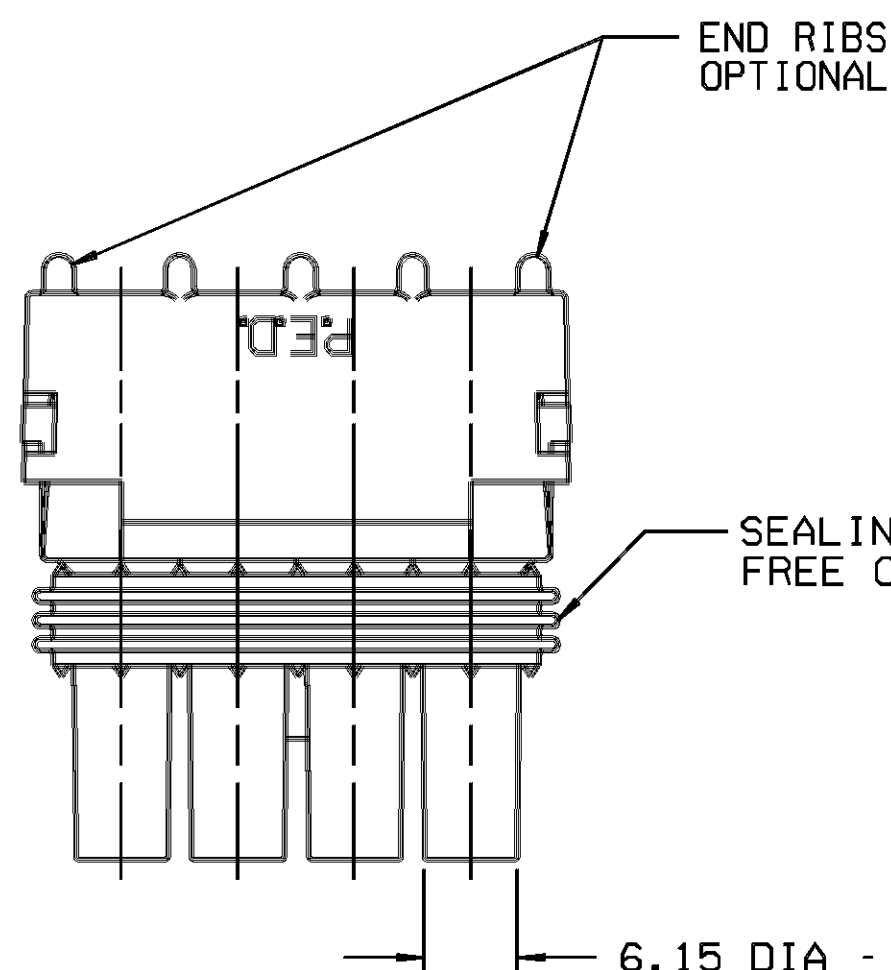


THIS DRAWING AND DESIGN HEREON CON-
STITUTES A PROPRIETARY DESIGN OF
PACKARD ELECTRIC DIVISION AND IS NOT
TO BE DUPLICATED OR REPRODUCED WITH-
OUT AUTHORITY OF PACKARD ELECTRIC
DIVISION.

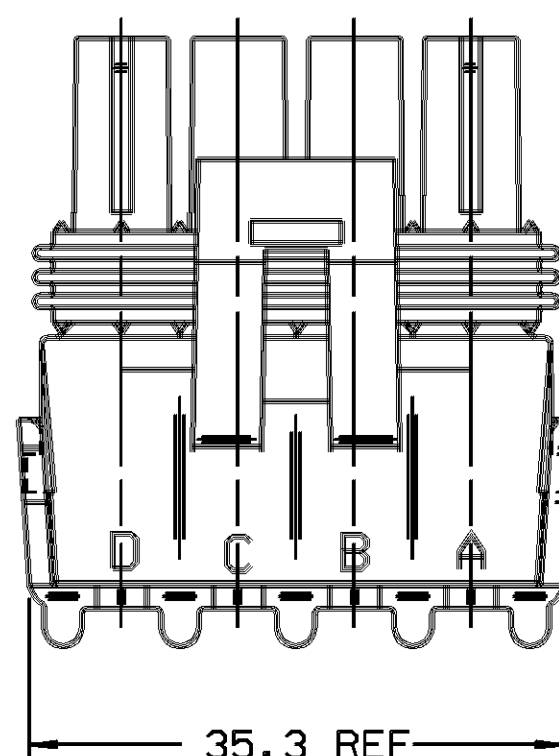
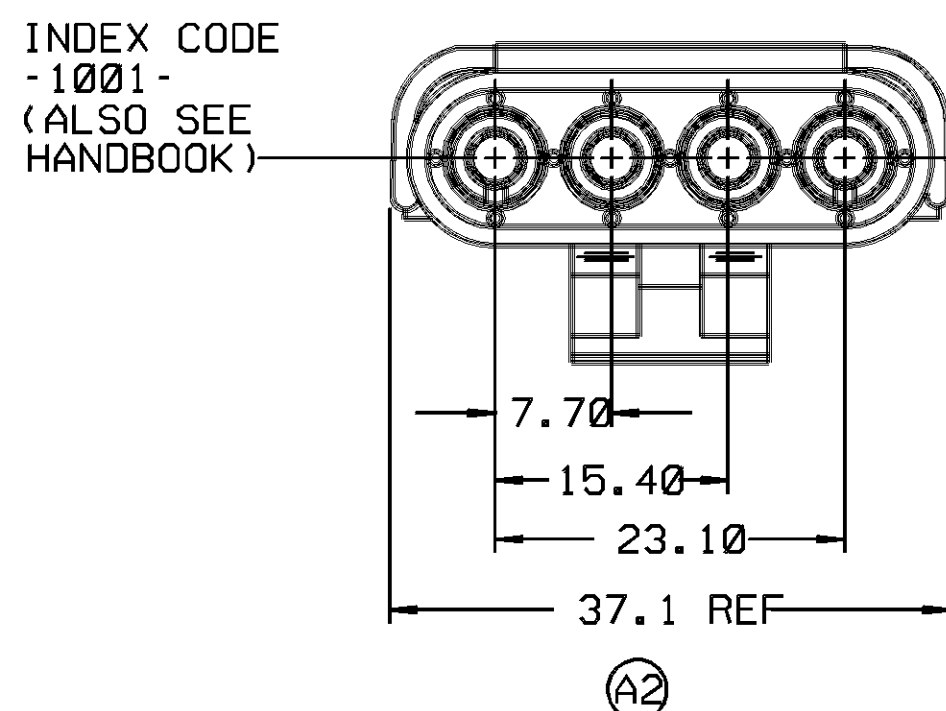
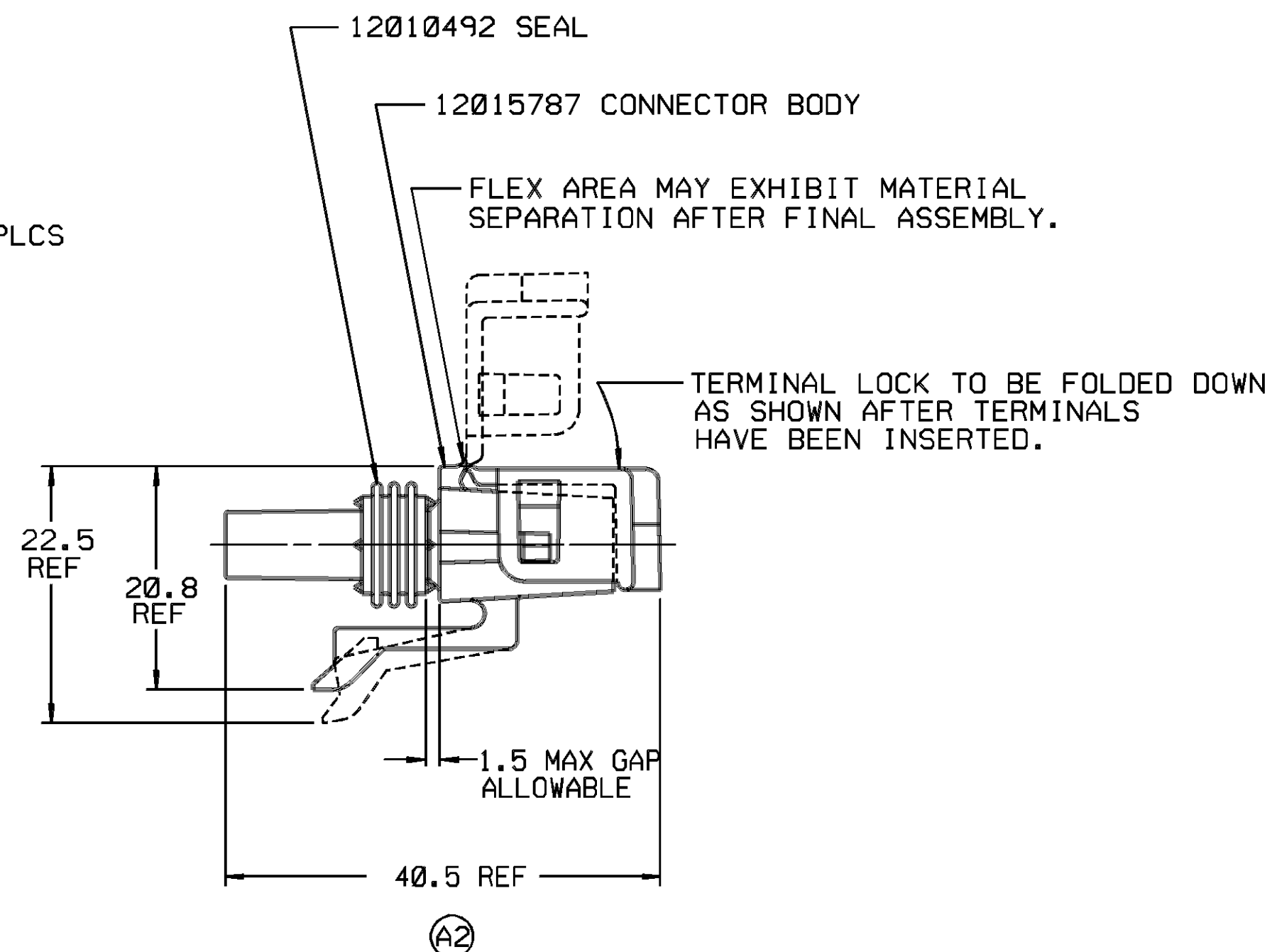
DO NOT SCALE



STANDARD CONSTRUCTION

OPTIONAL
CONSTRUCTION

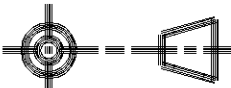
CABLE END VIEW OF CONN BODY



- NOTES — 1. USE FEMALE TERMINAL 12089188 OR EQUIVALENT FOR 'IN-LINE' APPLICATIONS.
2. USE CABLE SEAL 12015323 OR EQUIVALENT.
3. MATING CONNECTOR 12010974 OR EQUIVALENT.
4. WHEN PARTS ARE SHIPPED, THEY MUST BE PACKED IN PLASTIC BAGS OR SHIPPING CONTAINERS MUST BE LINED WITH PLASTIC LINERS. BAGS OR LINERS MUST BE SEALED TO AVOID ENTRY OF FOREIGN MATTER.
5. SEALING CODE 3.
6. WHEN DESIGNING A PART TO MATE TO THIS WEATHER PACK CONNECTOR, REQUEST THE LATEST COPY OF DRAWING NUMBER 12020084 FROM THE PACKARD ELECTRIC DIVISION.

[illegible]

PART NO.
1201 5797

PED / MICROSTATION.		FILE SPEC:	
		***** DGN#SPECIFICATION***** *****SYTIME*****	
THIRD ANGLE PROJECTION		METRIC	
		DIMENSIONS ARE IN MILLIMETERS UNLESS OTHERWISE SPECIFIED.	
CODE NO. 6900		TOLERANCE UNLESS OTHERWISE SPECIFIED DECIMAL: ANGULAR ±2°	
G.C. -C-5110		ONE PLACE ± 0.3 TWO PLACE ± 0.15	
DWG. DATE	05MY80	SCALE NONE	
DR. JOYCE E. HEBBERTS		05MY80	
EST.NO.		CK. T. MUDREY	DATE 05MY80
REFERENCE NO.		APPR. JOHN A. YURTI	DATE 07MY80
		APPR. ART WINYARD	DATE 07MY80
MATERIAL SPEC.			
SEE DRAWING			
NAME			
ASM CONN 4F W/P TWR			
PART NO.		SIZE	
1201		5797	
		C	

H **PACKARD ELECTRIC DIVISION**
GENERAL MOTORS CORPORATION
WARREN, OHIO

36V
38A
98
101 - V
122V
197A
4274A
4300A
4400A
4471A

C/N NISSAN

PACKARD ELECTRIC

Mouser Electronics

Authorized Distributor

Click to View Pricing, Inventory, Delivery & Lifecycle Information:

[Aptiv:](#)

[12015797](#) [12015797-B](#)