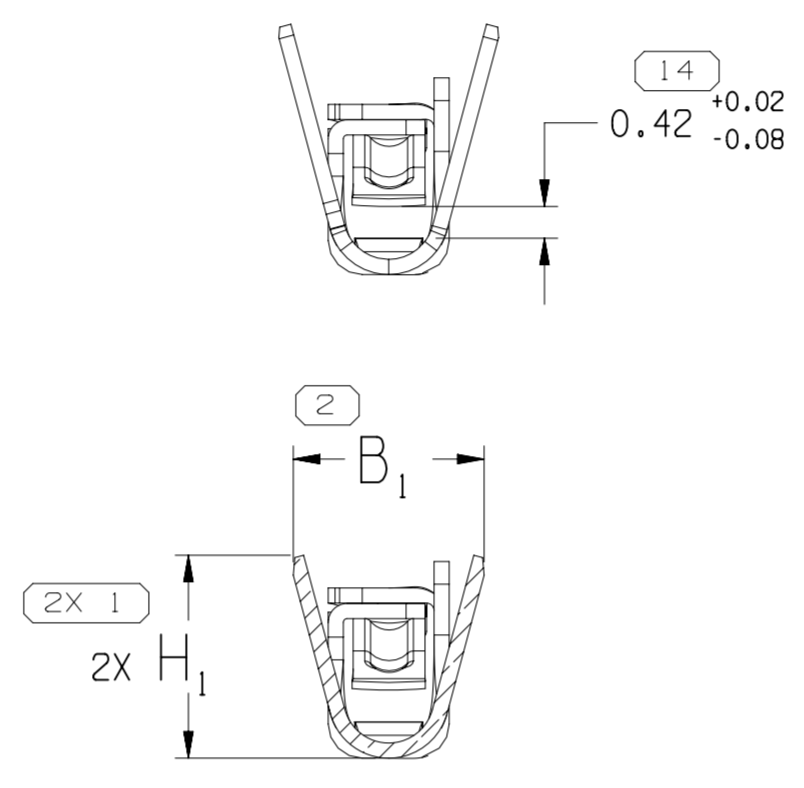
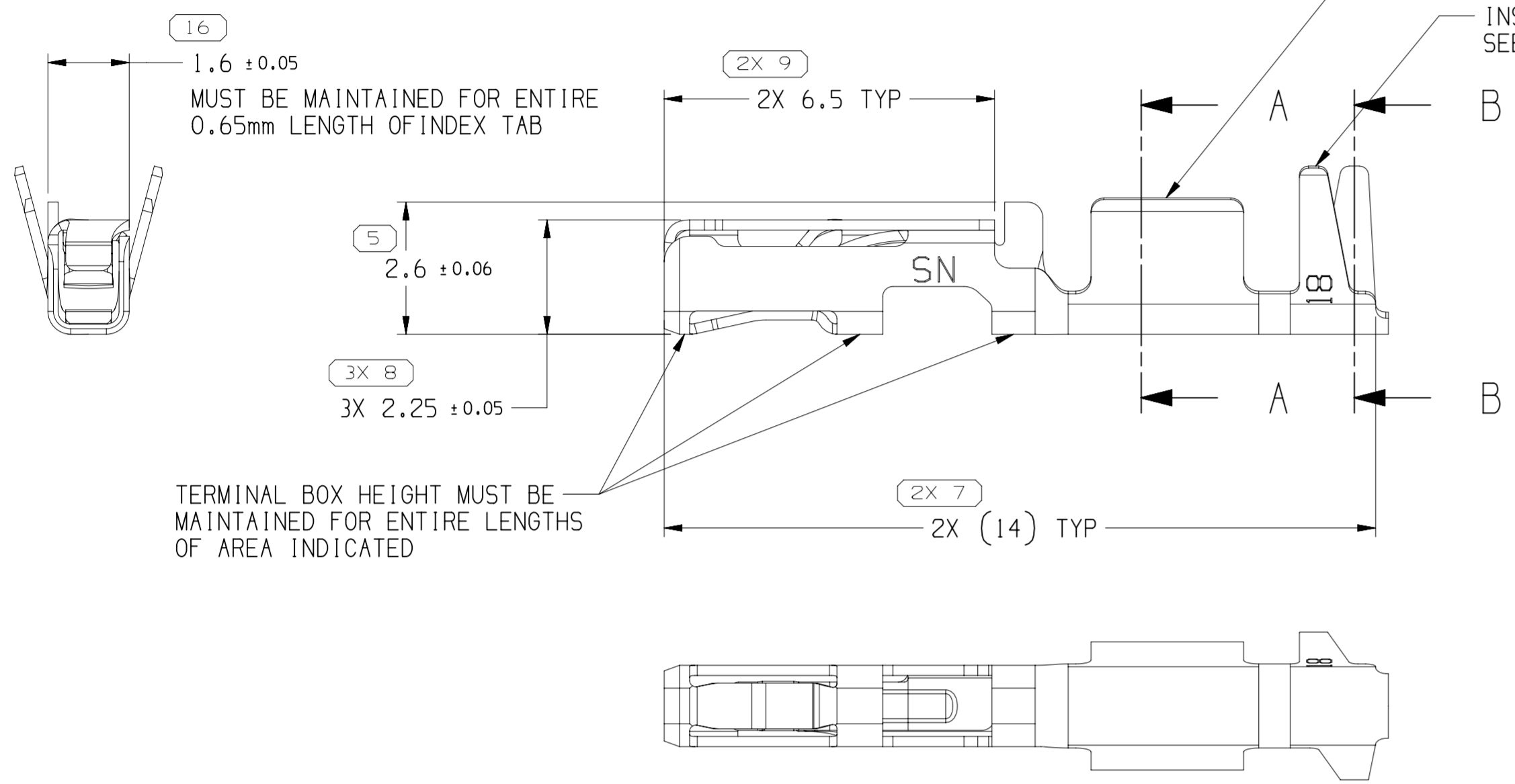
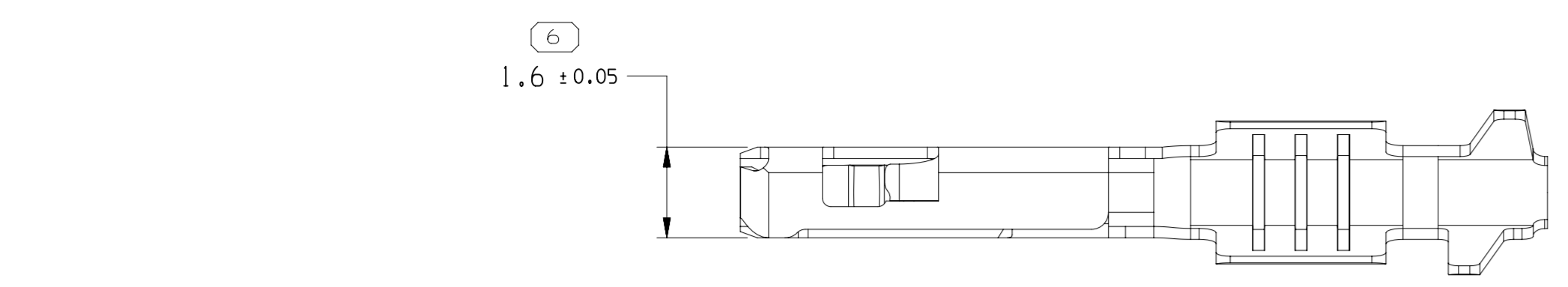


| SYMBOL DEFINITION  |                                  | MISSING SYMBOLS |    |
|--|----------------------------------|-----------------|----|
| A DIMENSION WITHOUT AN INSPECTION REPORT SYMBOL DOES NOT REQUIRE INSPECTION. IT MAY BE CONTROLLED ON THE INDIVIDUAL COMPONENT DRAWING. | TOTAL NO OF INSPECTIONS REQUIRED | 15              | 17 |
|  | LAST NO. USED                    |                 | 18 |

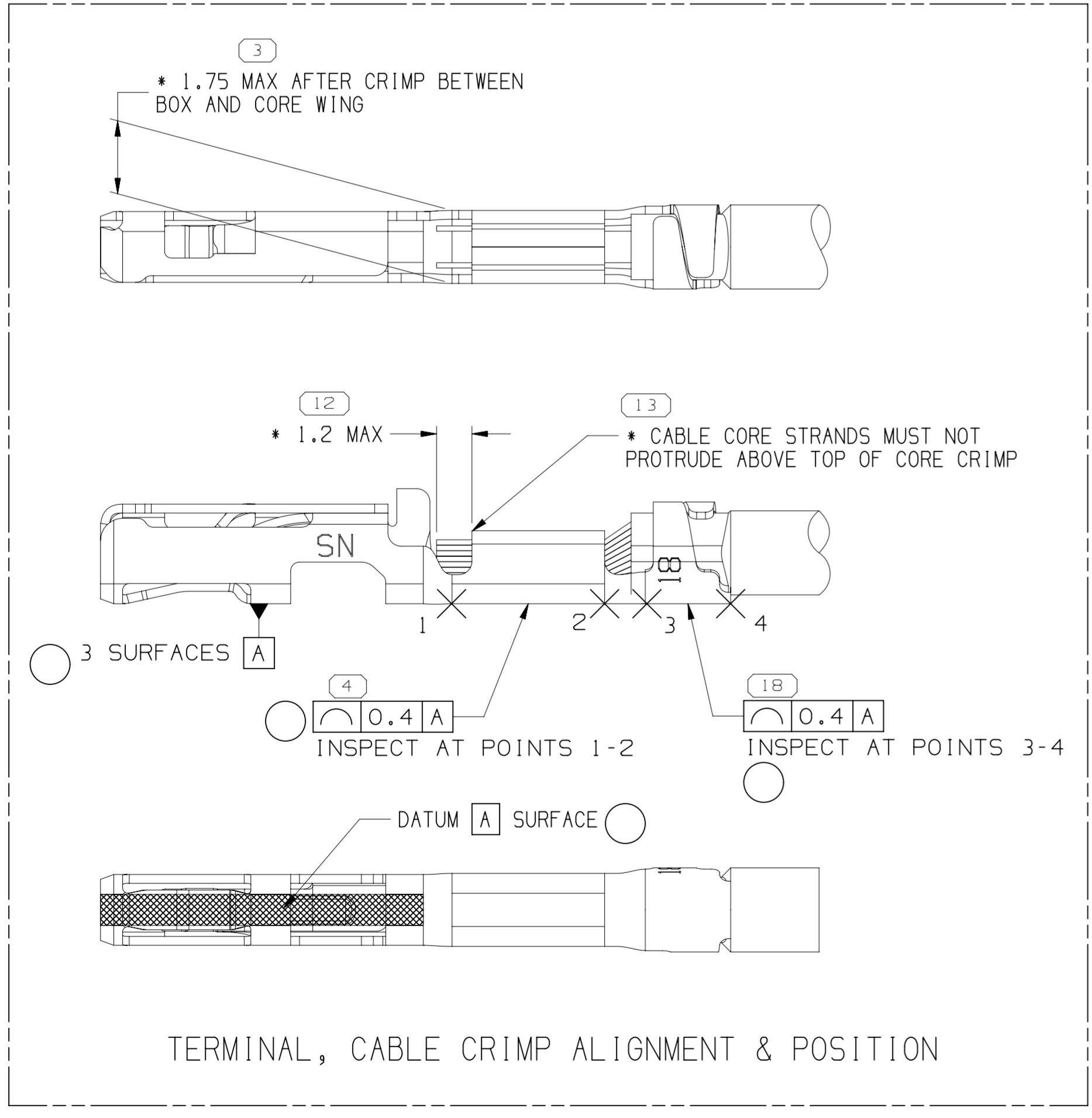
| DWG STATUS |     |     |     | ZONE | REVISION HISTORY |   |  |  | AUTH | DR     | APVD 1 | APVD 2 |     |
|------------|-----|-----|-----|------|------------------|---|--|--|------|--------|--------|--------|-----|
| DATE       | STG | REV | N/P |      | CHG              |   |  |  |      |        |        |        |     |
| 28JUN10    | R   | 01  | -   | -    |                  | ALL PARTS - RELEASED  |  |  |      | 437646 | JVM    | JVM    | RBS |
| 11JA18     | R   | 02  | -   | -    |                  | 35088746 - UPDATED PART AVAILABILITY  |  |  |      | 438742 | AGH    | VMR    | AGH |
| 19JA18     | R   | 03  | -   | -    |                  | 35088745 - UPDATED PART AVAILABILITY  |  |  |      | 438799 | AGH    | VMR    | AGH |
| 01MR18     | R   | 04  | -   | -    |                  | 35088747 - UPDATED PART AVAILABILITY  |  |  |      | 439143 | AGH    | VMR    | AGH |
| 02MY18     | R   | 05  | -   | -    |                  | 35088745-46 - REMOVED INSULATOR HOLE FEATURE & ITS ASSOCIATED INFO; 35088747 - REVISED GRAPHICS   |  |  |      | 439662 | LXA    | JAA    | AGH |
| 05AP19     | R   | 06  | -   | -    |                  | ALL PARTS - DIM #4 WAS 0 ± 2° AND ADDED GD&T PROFILE OF LINE CONTROL FRAME & DATUM A OVERALL INFO |  |  |      | 441273 | DAV    | JAA    | RBS |



SECTION A-A SECTION B-B

NOTES

- UNLESS OTHERWISE SPECIFIED AND/OR INDICATED:  
DIMENSIONS ARE TO FACE OF VIEW SHOWN AND AUTOMATICALLY ROUNDED BY COMPUTER FOR INSPECTION (SEE MATH MODEL FOR PRECISE DIMENSIONS). FOR ALL OTHER DIMENSIONS NOT SHOWN BUT REQUIRED FOR TOOL BUILD, SEE MATH MODEL FOR PRECISE TOOL PATH DATA.
- RECOMMENDED MATING BLADE THICKNESS 0.64±0.03mm  
RECOMMENDED MATING BLADE WIDTH NOT TO EXCEED 1mm AND NO LESS THAN 0.6mm. SEE USCAR EWCAP-001 DRAWING (0.64 PIN) FOR OTHER MATING BLADE REQUIREMENTS.
- MAXIMUM CURRENT CAPACITY IS 7.5 AMPS WITH 0.8mm<sup>2</sup> COPPER CABLE.
- \* DENOTES DIMENSIONS MADE AT CUT-OFF AND CRIMP DIE
- MAXIMUM INSULATION CRIMP WIDTH 1.77mm AND HEIGHT 2.3mm FOR CABLE SIZE UP TO 1.9mm O.D.  
MAXIMUM CORE CRIMP WIDTH 1.67mm
- DO NOT PROBE, TEST OR OTHERWISE CONTACT THE INTERIOR REGION (THE SPRING OR ANY MOVING PART) OF THIS TERMINAL. SEVERE DAMAGE CAN OCCUR, COMPROMISING THE PERFORMANCE OF THE ELECTRICAL INTERFACE.
- PLATING TYPE:  
1. REFLOW TIN 1.9-3.3 MICROMETERS THICK OVER NICKEL UNDERPLATE 0.13-0.5 MICROMETERS THICK  
  
PLATING TYPE INFORMATION SHOWN ABOVE IS REFERENCE ONLY, PLATING REQUIREMENTS ARE CONTAINED IN APPLICABLE MATERIAL SPECIFICATION
- SEE TAXI P/N 13887649 FOR SIMILAR TERMINALS WITH DIFFERENT CONNECTOR CAVITY INDEX.
- PARTS MEET THE PERFORMANCE REQUIREMENTS OF GMW3191 DEC 2007 AND SAE/USCAR-2 R5 REVISIONS FOR THE FOLLOWING CLASSIFICATIONS:  
TEMPERATURE CLASS 3(-40° C TO +125° C)  
VIBRATION CLASS 1(ON BODY OR CHASSIS)  
SEALING CLASS 1(UNSEALED)



|  |              |
|--|--------------|
| PART DRAWING   |              |
| STYLE  |              |
| VOLUME (CM <sup>3</sup> )  | DISTR CODE   |
|  | D            |
| UNLESS OTHERWISE SPECIFIED   |              |
| THIS DOCUMENT IS IN ACCORDANCE WITH ASME Y14.5M-1994 AS AMENDED BY THE GM GLOBAL DIMENSIONING AND TOLERANCING ADDENDUM-2001. SEPARATE PATTERNS OF FEATURES MAY BE GAGED SEPARATELY REGARDLESS OF DATUM REFERENCES. |              |
| ALL DIMENSIONS ARE IN MILLIMETERS  |              |
| THIRD ANGLE PROJECTION   | DO NOT SCALE |
| USE MATH DATA  | NX           |

**• APTIV •**  
CONNECTION SYSTEMS  
WARREN, OH  
COPYRIGHT 2017 APTIV. ALL RIGHTS RESERVED.

THIS DRAWING IS THE PROPERTY OF APTIV AND CONTAINS APTIV CONFIDENTIAL INFORMATION. THE REPRODUCTION, DISTRIBUTION AND UTILIZATION OF THIS DOCUMENT OR ITS RELATED CAD MATH DATA, AS WELL AS COMMUNICATION OF ANY CONTENT TO OTHERS, WITHOUT EXPRESS AUTHORIZATION, IS PROHIBITED.

|                       |        |
|-----------------------|--------|
| DR                    | DATE   |
| APVD1 J. VILLAMIL     | 03NO17 |
| APVD2 J. VILLAMIL     | 03NO17 |
| APVD3 ROBERT B SNADER | 03NO17 |
| APVD4                 |        |
| APVD5                 |        |

SUBSTANCES OF CONCERN AND RECYCLED CONTENT PER APTIV 10949001

MATERIAL SEE CHART

DRAWING NAME  
TAXI TERM F OCS 0.64 IUR SN

DRAWING NUMBER  
13767042

|      |       |          |          |     |     |     |
|------|-------|----------|----------|-----|-----|-----|
| SIZE | SCALE | FRAME NO | SHEET NO | STG | REV | N/P |
| A1   | 10:1  | 1 OF 1   | 3 OF     | R   | 06  | -   |

| PART NO  | REV | N/P | MATERIAL DESCRIPTION    | CONTACT AREA PLATING TYPE (SEE NOTE 7) | CRIMP AREA PLATING TYPE (SEE NOTE 7) | I.D. | CABLE SIZE (mm <sup>2</sup> ) | CABLE DIA  | B <sub>1</sub> ±0.15 | B <sub>2</sub> ±0.25 | (H <sub>1</sub> ) | (H <sub>2</sub> ) |
|----------|-----|-----|-------------------------|--|--------------------------------------|------|-------------------------------|------------|----------------------|----------------------|-------------------|-------------------|
| 35088745 | 02  | AA  | TIN PLATED COPPER ALLOY | 1                                      | 1                                    | 18   | 0.75 - 0.8                    | 1.7 - 1.9  | 2.52                 | 2.88                 | 2.68              | 3.31              |
| 35088746 | 02  | AA  | TIN PLATED COPPER ALLOY | 1                                      | 1                                    | 21   | 0.35 - 0.5                    | 1.2 - 1.83 | 2.04                 | 2.8                  | 2.06              | 3.17              |
| 35088747 | 02  | AA  | TIN PLATED COPPER ALLOY | 1                                      | 1                                    | 25   | 0.13 - 0.22                   | 0.81 - 1.2 | 1.54                 | 1.74                 | 1.56              | 1.77              |

|  |                             |
|--|-----------------------------|
| 6  | PROCESS SENSITIVE DIMENSION |
| DIMENSIONS ENCLOSED IN ( ) INDICATE REFERENCE DIMENSIONS AND NO TOLERANCE LIMITS ARE ESTABLISHED |                             |
| DIMENSIONAL RANGE (MM)   | CHART ID                    |
| FROM 0   | >12                         |
| TO 12  |                             |
| TOLERANCE UNLESS OTHERWISE SPECIFIED   |                             |
| +0.1   | +0.2                        |
| ANGULAR TOLERANCE  | ±2°                         |

# Mouser Electronics

Authorized Distributor

Click to View Pricing, Inventory, Delivery & Lifecycle Information:

[Aptiv:](#)

[35088746](#)