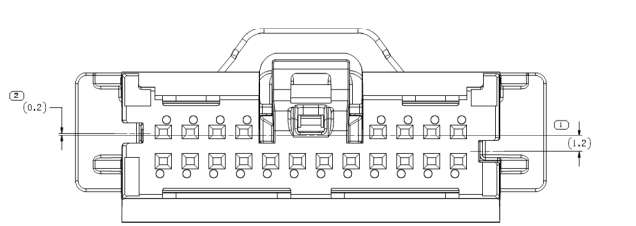
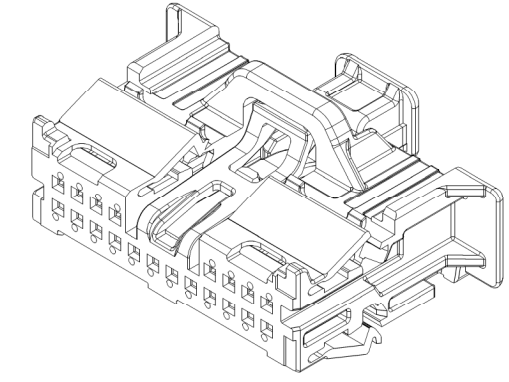
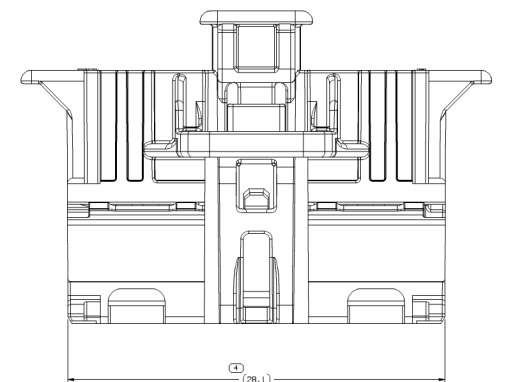
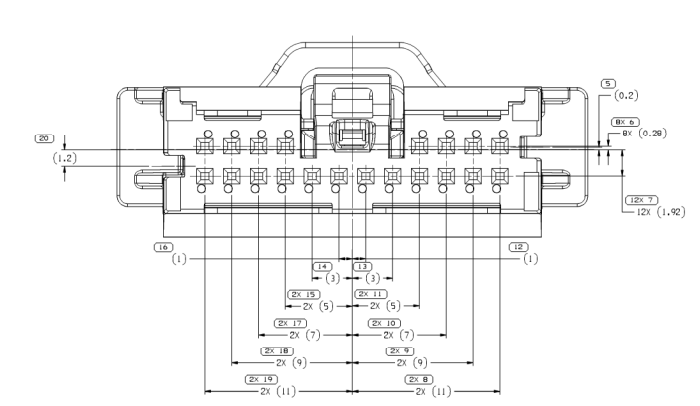


SYMBOL DEFINITION		MISSING SYMBOLS	
A DIMENSION WITHOUT AN INSPECTION REPORT SYMBOL (I) DOES NOT REQUIRE INSPECTION. IT MAY BE CONTROLLED ON THE INDIVIDUAL COMPONENT DRAWING.			
TOTAL NO. OF INSPECTIONS REQUIRED	50	NO MISSING SYMBOL NUMBER	
LAST NO. USED	23		

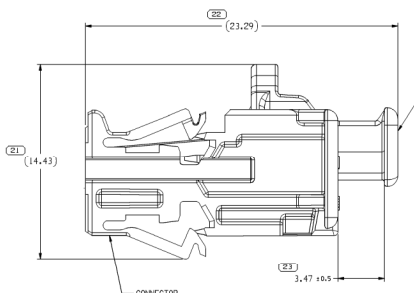
REV	DATE	BY	CHK	DESCRIPTION
001				ISSUE FOR PRODUCTION
002				REVISION 1
003				REVISION 2
004				REVISION 3
005				REVISION 4
006				REVISION 5
007				REVISION 6
008				REVISION 7
009				REVISION 8
010				REVISION 9
011				REVISION 10
012				REVISION 11
013				REVISION 12
014				REVISION 13
015				REVISION 14
016				REVISION 15
017				REVISION 16
018				REVISION 17
019				REVISION 18
020				REVISION 19
021				REVISION 20
022				REVISION 21
023				REVISION 22
024				REVISION 23



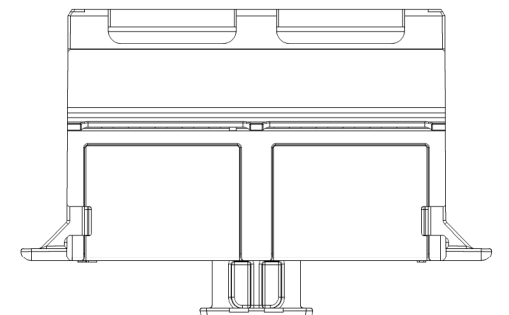
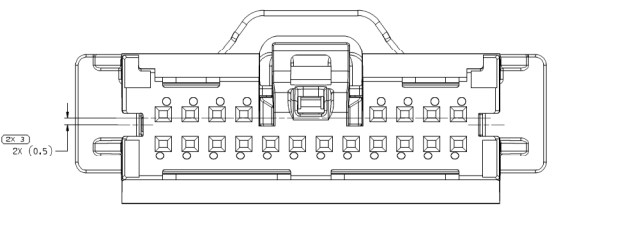
TYPE 102
SAME AS TYPE 101
EXCEPT AS SHOWN



TYPE 101



TYPE 103
SAME AS TYPE 101
EXCEPT AS SHOWN



- NOTES
- UNLESS OTHERWISE SPECIFIED AND/OR INDICATED: DIMENSIONS ARE TO FACE OF VIEW SHOWN AND AUTOMATICALLY ROUNDED BY COMPUTER FOR INSPECTION (SEE WITH MODEL FOR PRECISE DIMENSIONS). FOR ALL OTHER DIMENSIONS NOT SHOWN BUT REQUIRED FOR TOOL BUILD, SEE WITH MODEL FOR PRECISE TOOL PATH DATA.
 - WHEN PARTS ARE SHIPPED THEY MUST BE PUSHED IN PLASTIC BAGS OR SHIPPING CONTAINERS MUST BE LINED WITH PLASTIC LINERS. BAGS OR LINERS MUST BE SEALED TO AVOID FOREIGN MATTER.
 - SEALING CODE 1 - DESIGN WILL MEET REQUIREMENTS OF SAE/J1455 UNSEALED CONNECTOR SYSTEM ENVIRONMENTAL TEST FLOWCHART
 - THIS PART IS NOT CONTROLLED FOR AUTOMATIC FEEDING.
 - FOR APPLICATION DATA SEE THE INDIVIDUAL APPLICATION DRAWINGS.

33305408
REV 12 OF 21

PART NO	REV	DATE	TYPE	CDN	CPA
33305411	04	AC	103	33305407	33380638
33305410	04	AC	102	33305406	33380638
33305409	04	AC	101	33305405	33380638

DELPHI
DELPHI FINLAND ELECTRICAL/ELECTRONIC ARCHITECTURE

DATE: 12/08/08
REV: 12

33305408

TAXI ASM CONN 20 F CTS 050

33305408

Mouser Electronics

Authorized Distributor

Click to View Pricing, Inventory, Delivery & Lifecycle Information:

[Aptiv:](#)

[33305411](#)