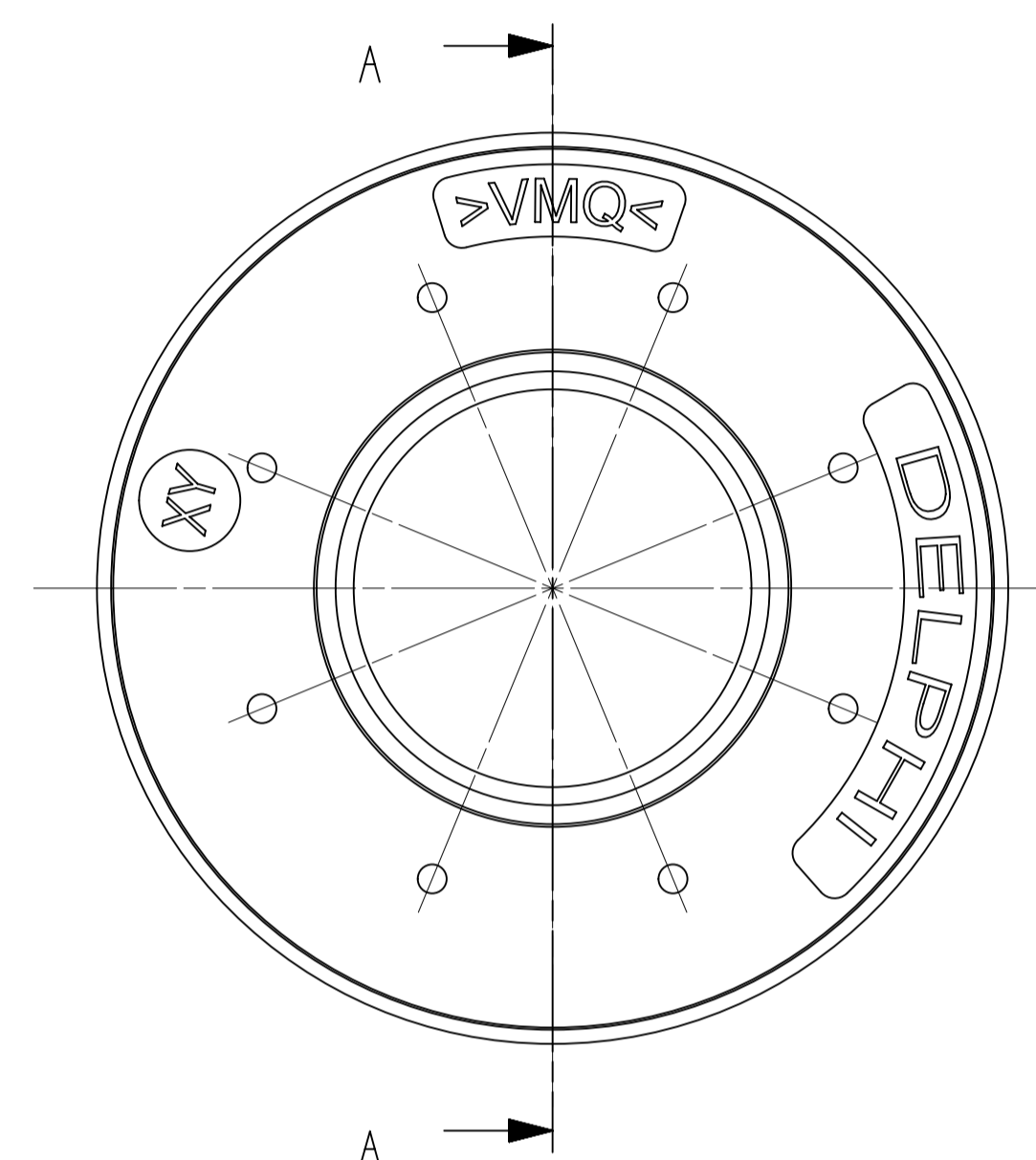
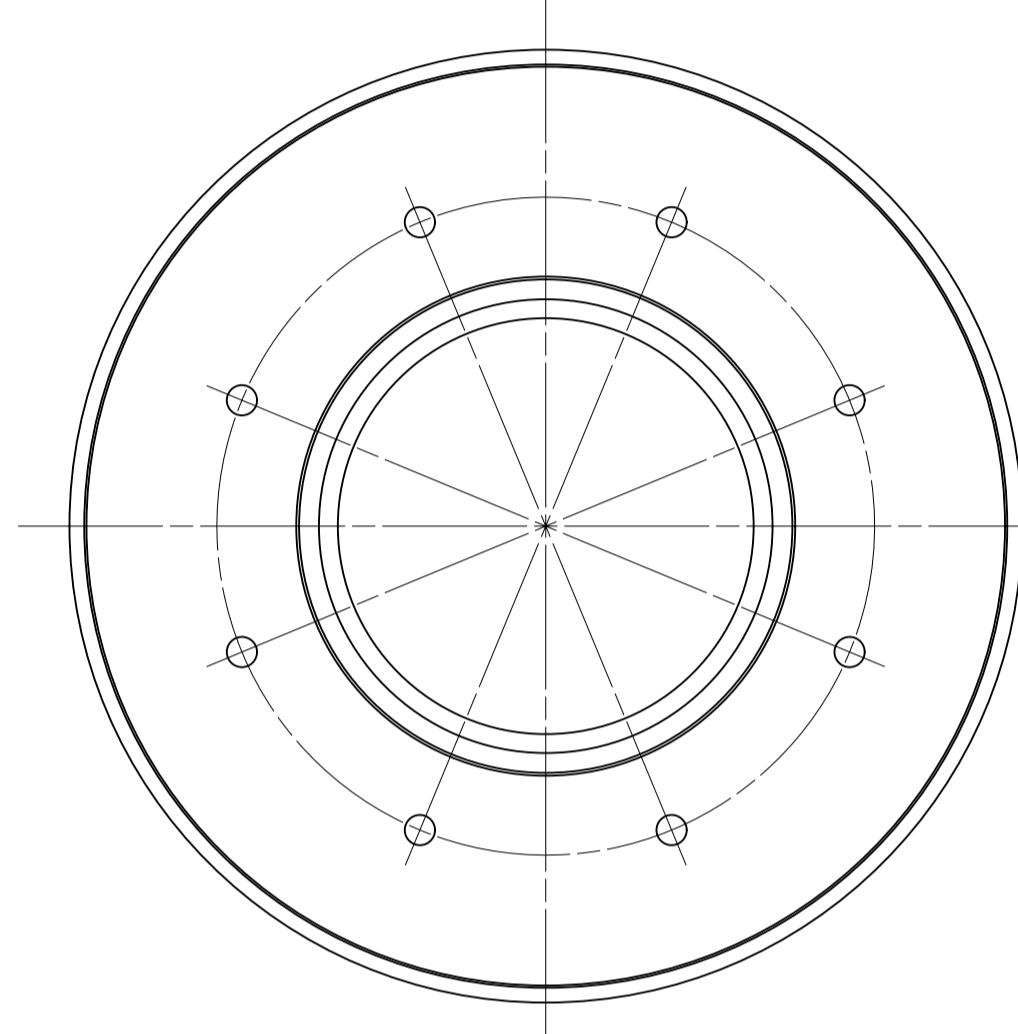
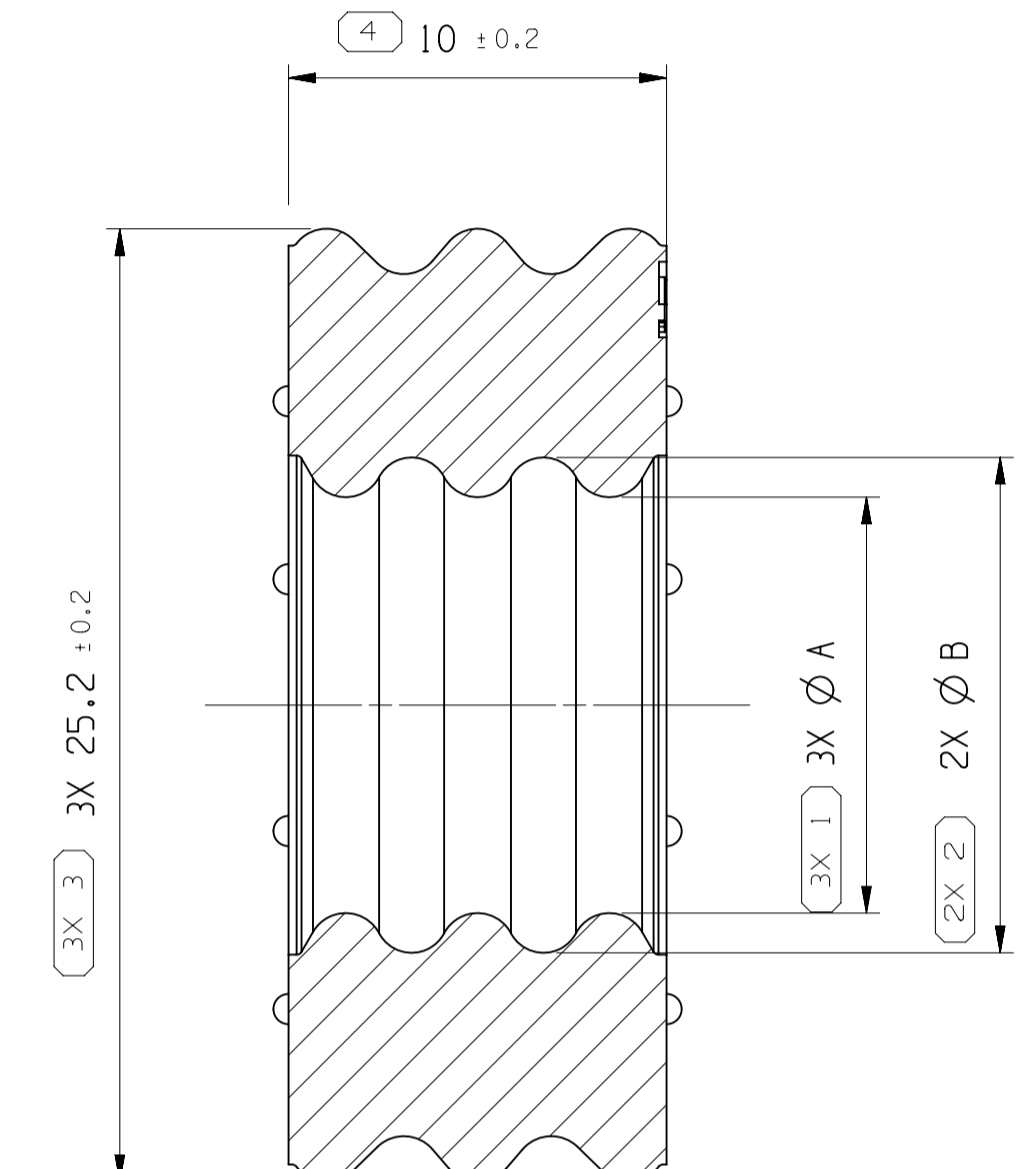


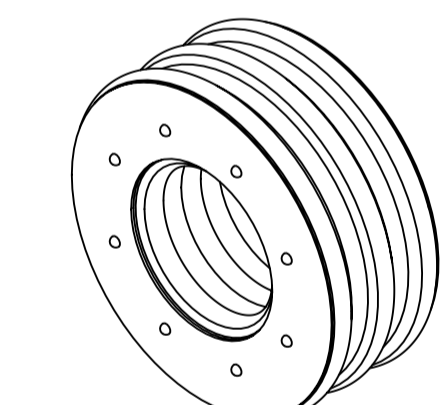
DWG STATUS		ZONE		REVISION HISTORY		AUTH	DR	APVD 1	APVD 2
DATE	STG	REV	N/P	CHG					
15DE21	R	01			INITIAL RELEASE			M.KLE	S.RAN T.BOL



SECTION A-A



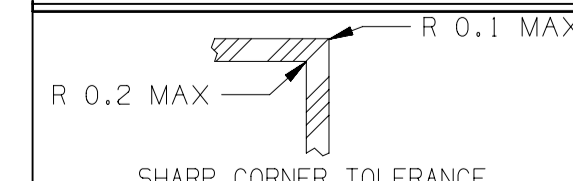
SCALE: 2:1



DWG TYP	PART DRAWING	DISTR CODE	D
WEIGHT (GR)	SEE TABLE		
VOLUME (CM³)	SEE TABLE		
ROUTING			

- NOTES
- NOT DIMENSIONED GEOMETRY HAS TO BE TAKEN FROM THE CORRESPONDING 3D DATA FILE
 - MATERIAL SPECIFICATION: SILICONE, AUTOLUBRICATION
 - TENSILE STRENGTH : RM MIN 6.2 N/MM²
 - ELONGATION : 375% DIN 53504-S2
 - DUROMETER ORIGINAL: SHORE (A) 50±5 DIN53505
 - MEASURE ON TEST SLABS
 - SHOWN IS 35095204

A LINE DRAWN THROUGH A PART NUMBER INDICATES THAT PHYSICAL PARTS ARE NOT AVAILABLE FOR ORDERING.
 PART NUMBERS THAT DO NOT HAVE A LINE PRESENT INDICATE THAT PHYSICAL PARTS ARE AVAILABLE FOR ORDERING.
 CONTACT APTIV SALES TO ASSURE AVAILABILITY OF PARTS.

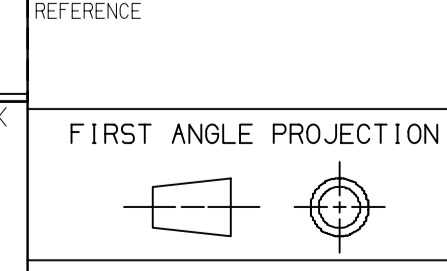


○ DIM TO CHECK	○ DIM FOR HELP	□ THEORETIC DIM			
DIMENSIONAL RANGE (MM) CHART C					
FROM	>0	>25	>60	>80	>80
TO	25	60	80	80	80
TOLERANCE UNLESS OTHERWISE SPECIFIED					
	±0.3	±0.5	±0.6	±0.75	±0.75
ANGULAR TOLERANCE ±2°					

UNLESS OTHERWISE SPECIFIED

GENERAL TOLERANCES ACCORDING TO: SEE CHART

GD&T ACCORDING TO: ISO 1101 ISO 8015



DO NOT SCALE USE MATH DATA

• APTIV •

CONNECTION SYSTEMS
 KRAKOW, POLAND
 COPYRIGHT 2021 APTIV. ALL RIGHTS RESERVED.

THIS DRAWING IS THE PROPERTY OF APTIV AND CONTAINS APTIV CONFIDENTIAL INFORMATION; THE REPRODUCTION, DISTRIBUTION AND UTILIZATION OF THIS DOCUMENT OR ITS RELATED CAD DATA, AS WELL AS COMMUNICATION OF ANY CONTENT TO OTHERS, WITHOUT EXPRESS AUTHORIZATION, IS PROHIBITED.

DR	M.KLEJDYSZ	DATE	15DE21
APVD1	S.RANGASAMY	15DE21	
APVD2	T.BOLTE	15DE21	
APVD3			
APVD4			
APVD5			

SUBSTANCES OF CONCERN AND RECYCLED CONTENT PER APTIV 10949001

MATERIAL SEE TABLE

DRAWING NAME SINGLE WIRE SEAL

DRAWING NUMBER 35049932

SIZE	A1	SCALE	5:1	FRAME NO	1 OF 1	SHEET NO	1 OF 1	STG	R	REV	01	N/P	-
------	----	-------	-----	----------	--------	----------	--------	-----	---	-----	----	-----	---

SL.NO	TITLE	CAVITY DIAMETER Ø	CABLE SIZE [mm²]	PART-NO.	PART-REV.	INSULATION DIAMETER [mm]	WEIGHT [g]	VOLUME [cm³]	MATERIAL	COLOR	SIM. TO RAL	MATERIAL SPEC.	A ±0.2	B ±0.2
3			50	35095204		Ø 11.5-12.8	3.8	3.4	SILICONE 50 SHORE 2%	WHITE	9010	M3469011	11.0	13.1
2	SEAL	24.0	35 SHIELDED	35049931	01	Ø 12.5-13.5	3.7	3.3		MAIZE	1006	M3469035	11.9	14.0
1			35	35093138		Ø 9.8-11.0	4.3	3.8		GRAY	7000	M3469003	9.1	11.2

CONTROLLED DOCUMENTS ARE ONLY AVAILABLE ON THE SERVER

Mouser Electronics

Authorized Distributor

Click to View Pricing, Inventory, Delivery & Lifecycle Information:

[Aptiv:](#)

[35049931](#)