

# Bluetooth module

Includes:

- Pre-configured Bluetooth radio module with soldered headers (XBee socket compatible)



More info about the product!



Bluetooth module SKU is: AS-XBEE-BT-2.4-INT-01

Get a discounted bulk price on this product for orders of 50 units or more. Contact us at [info@ardusimple.com](mailto:info@ardusimple.com) to get a quote.

## Description

With ArduSimple Bluetooth module, you will be able to provide low cost RTK technology to your smartphone or computer without cables.

Good to know:

- Compatible with all ArduSimple boards with XBee socket
- Default configuration is at 115'200bps and Bluetooth PIN: 1234
- Compatible with smartphones, computers and other devices that support Bluetooth 2.0
- You can customize the name of the Bluetooth device, by default is "RTK\_GNSS\_\*\*\*"
- Not compatible with iOS device, for iOS devices we can propose the [BT+BLE Bridge](#).

Product Change History:

- AS-XBEE-BT-2.4-INT-00: initial version at 38'400bps
- AS-XBEE-BT-2.4-INT-01: BT baudrate set at 115'200bps

## Specifications

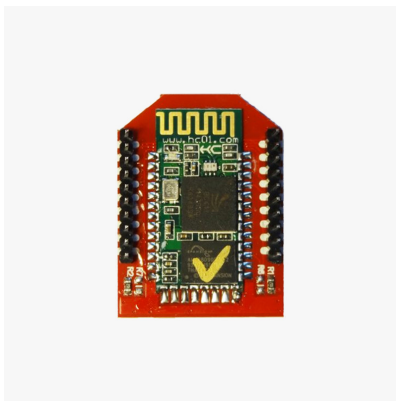
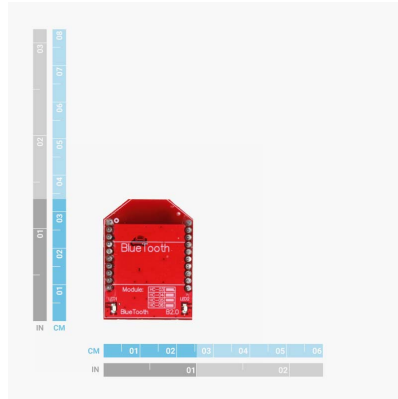
### Interfaces

- UART
- RS232 ([requires accessory](#))

### Bluetooth hardware features

- Bluetooth V2.0
- Bluetooth SPP (Serial Port Profile)
- Voltage supply (VCC): 3.0 - 3.6V
- UART voltage: same as VCC
- Frequency: 2.4 GHz (2402 - 2480 MHz)
- Max output power: 10dBm

## Image Gallery



## Documentation

Footprint      <https://www.snapeda.com/search/?q=ardusimple>

Bluetooth module includes free basic technical support. Contact [info@ardusimple.com](mailto:info@ardusimple.com) for more information.

Data and descriptions in this document are subject to change without notice. Product photos and pictures are for illustration purposes only and may differ from the real product appearance.

# Mouser Electronics

Authorized Distributor

Click to View Pricing, Inventory, Delivery & Lifecycle Information:

[ArduSimple:](#)

[AS-XBEE-BT-2.4-INT](#)