

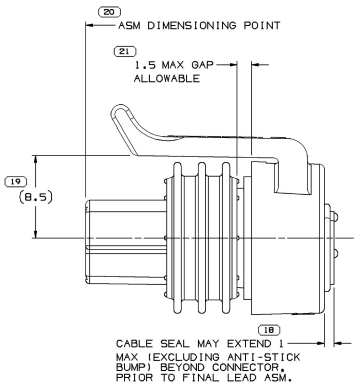
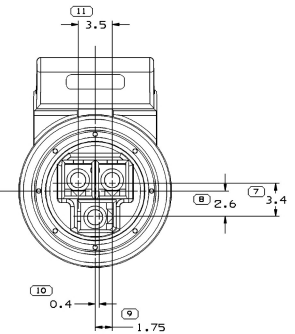
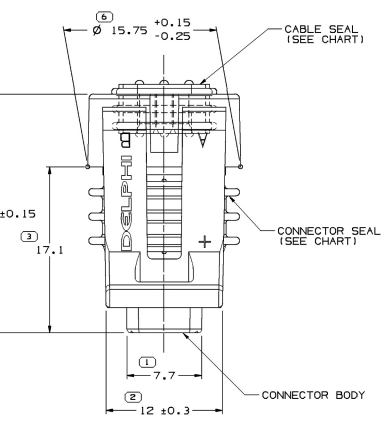
MATING TERMINAL
INFORMATION
SCALE 10:1

ED MATERIAL:
646 (CA210) EXTRA SPRING
PER-TIN PLATED BRASS

THICKNESS: 0.005-0.003 MM

TENSILE STRENGTH: 480-430 MPa

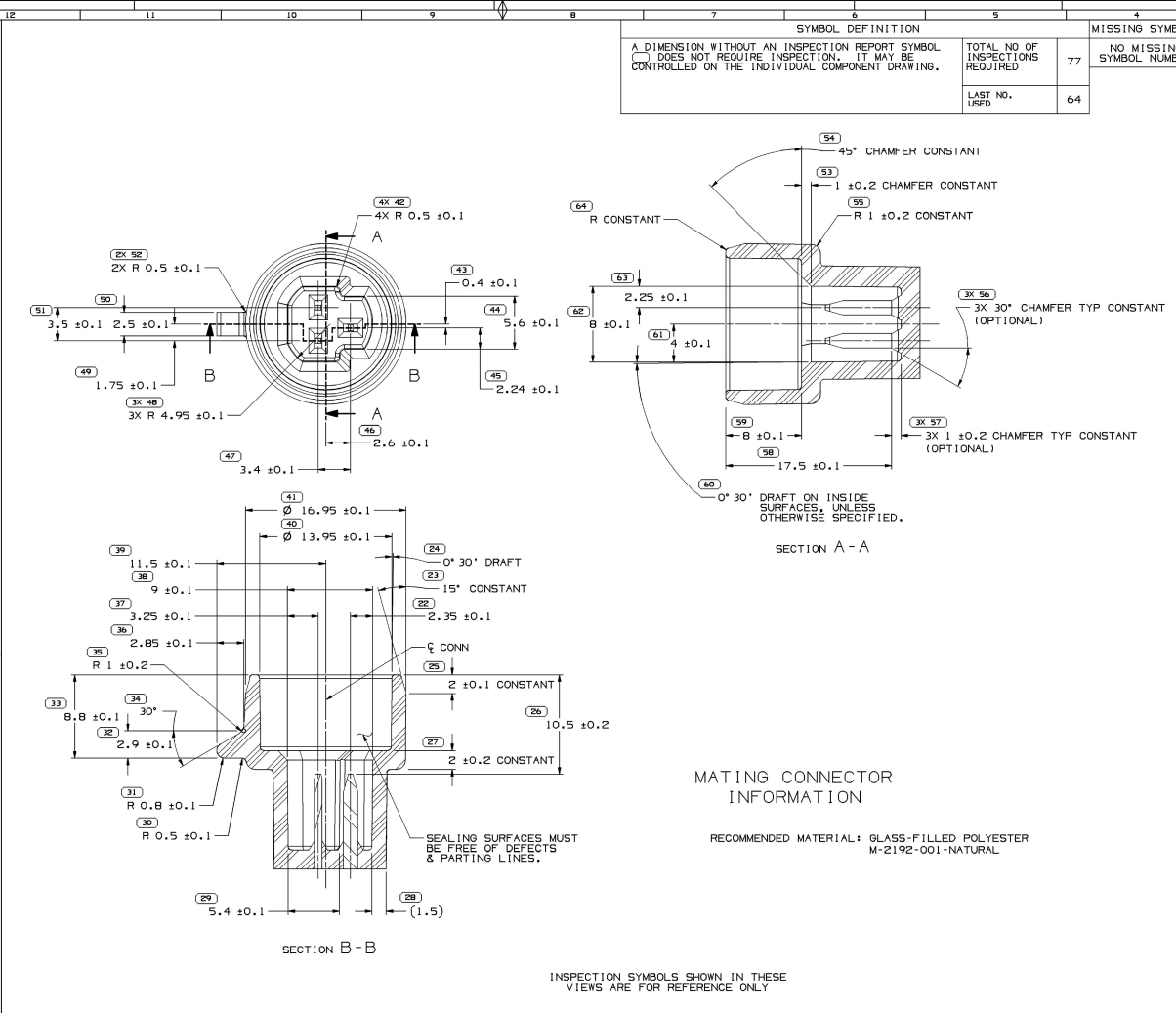
INSPECTION SYMBOLS SHOWN IN THESE
VIEWS ARE FOR REFERENCE ONLY



TYPE 101

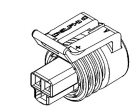
REV	N/P	PART NO. WITHOUT ADHESIVE	REV	N/P	TYPE	CONNECTOR	CONNECTOR SEAL	CABLE SEAL & COLOR
B3	-	15452173	01	AB	102	12065286	15439078	12065285 - RED
-	-	12186827	A3	-	101	12065286	12186821	12110072 - TAN
-	-	12162226	C3	-	101	12162225	12052893	12078089 - PURPLE
-	-	12110192	B3	-	101	12065286	12052893	12110072 - TAN
-	-	12078090	C3	-	101	12065286	12052893	12078089 - PURPLE
-	-	12065287	B3	-	101	12065286	12052893	12065285 - RED

REV N/P PART NO. WITHOUT ADHESIVE REV N/P TYPE CONNECTOR CONNECTOR SEAL CABLE SEAL & COLOR



SYMBOL DEFINITION		MISSING SYMBOLS	
A DIMENSION WITHOUT AN INSPECTION REPORT SYMBOL DOES NOT REQUIRE INSPECTION. IT MAY BE CONTROLLED ON THE INDIVIDUAL COMPONENT DRAWING.	TOTAL NO. OF INSPECTIONS REQUIRED	NO MISSING SYMBOL NUMBER	DATE
	77		310002
			R 01
			-
			-
			-
	LAST NO. USED		
	64		

DWG STATUS			REVISION HISTORY		
DATE	REV	BY	CHK	DATE	REVISION
310002	R 01	-	-	15452173	RELEASED
606011	R 02	-	-		ALL PARTS - CREATED APPLICATION DATA
03J114	R 03	-	-		ALL PARTS - ADDED LUBEVLL LUBRICANT NOTE



- NOTES
- UNLESS OTHERWISE SPECIFIED AND/OR INDICATED, DIMENSIONS ARE TO FACE OF VIEW SHOWN AND AUTOMATICALLY ROUNDED BY COMPUTER FOR INSPECTION (SEE MATH MODEL FOR PRECISE DIMENSIONS). FOR ALL OTHER DIMENSIONS NOT SHOWN BUT REQUIRED FOR TOOL BUILD, SEE MATH MODEL FOR PRECISE TOOL PATH DATA.
 - WHEN PARTS ARE SHIPPED THEY MUST BE PACKED IN PLASTIC BAGS OR SHIPPING CONTAINERS MUST BE LINED WITH PLASTIC LINERS. BAGS OR LINERS MUST BE SEALED TO AVOID ENTRY OF FOREIGN MATTER.
 - SEALING CODE 3 - DESIGN WILL PASS SALT FOG AND IMMERSION TEST AFTER CONDITIONING AS SPECIFIED IN ESA-644 (WEATHER-PACK) ESA-710 (METRI-PACK), ESA-650 (UNDERHOOD MICRO-PACK), C-4006 (WORLD CONNECTOR), ETC WHEN MATED TO MATING PART OR EQUIVALENT.
 - THIS PART ACCEPTS THE FOLLOWING COMPONENTS OR EQUIVALENT: CAVITIES TO ACCEPT 12047680 TERMINAL.
 - FOR LEAD LENGTH CALCULATIONS, DISTANCE FROM MATING END OF CONNECTOR TO FRONT END OF CABLE CORE IS 10.15/7.05.
 - FOR PART NUMBERS WITH ADHESIVE, USE M351001 OR ADHESIVE APPROVED BY MATERIALS ENGINEERING TO GLUE CONNECTOR SEAL TO CONNECTOR.
 - FOR APPLICATION DATA SEE THE INDIVIDUAL APPLICATION DRAWINGS.
- S-60-T LUBEVLL LUBRICANT CAN BE USED AS AN AUXILIARY SUPPORT ON THE CABLE INSTALLATION PROCESS.

TYPE 102
SAME AS TYPE 101
EXCEPT AS SHOWN

(N/A) PROCESS SENSITIVE DIMENSIONS

DIMENSIONS ENCLOSED IN () INDICATE DIMENSIONS ARE NOMINAL AND NO TOLERANCE WILL BE ESTABLISHED

DRAWING NUMBER 12078089

DATE 15452173

SCALE 10:1

PROJECTION THIRD ANGLE

DO NOT SCALE

USE MATH DATA

UNLESS OTHERWISE SPECIFIED THIS DRAWING IS TO BE USED IN ACCORDANCE WITH MIL-STD-883C METHOD 2000 FOR TESTING ELECTRICAL CONNECTORS - CIVILIAN AND MILITARY UNLESS OTHERWISE SPECIFIED THE APPROVED PART NUMBER IS TO BE USED UNLESS OTHERWISE SPECIFIED. THE REPRODUCTION, DISTRIBUTION OR USE OF THIS DOCUMENT BY ITS SUBJECT OR AS RELATED COMMUNICATION OF THE CONTENT HEREIN IS EXPRESSLY PROHIBITED, IN THE ABSENCE OF WRITTEN PERMISSION.

DELPHI CORPORATION
1996-01-15
DELPHI IS A REGISTERED TRADEMARK OF DELPHI CORPORATION
THIS DRAWING IS THE PROPERTY OF DELPHI CORPORATION
ALL RIGHTS ARE RESERVED
NO PART OF THIS DOCUMENT IS TO BE REPRODUCED OR TRANSMITTED IN ANY FORM OR BY ANY MEANS, ELECTRONIC OR MECHANICAL, INCLUDING PHOTOCOPYING, RECORDING, OR BY ANY INFORMATION STORAGE AND RETRIEVAL SYSTEM, WITHOUT PERMISSION IN WRITING FROM DELPHI CORPORATION
CONTACT DELPHI SALES TO OBTAIN AVAILABILITY

PART DRAWING

OR
APPROVED BY: J. REEVES
APPROVED BY: L. MARRETT
APPROVED BY: G. ZANAVATTI
APPROVED BY:

SUBSTITUTES OF COMPONENTS AND MATERIALS
CONTENT PER DELPHI 120446

SEE DRAWING

DRAWING TITLE
TAXI ASM CONN F M/P 15

SIZE A
SCALE 1:1
PAGE NO. 1 OF 1

12078089