
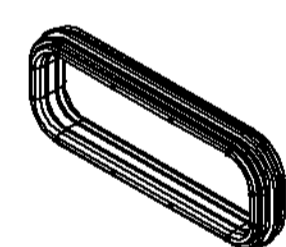
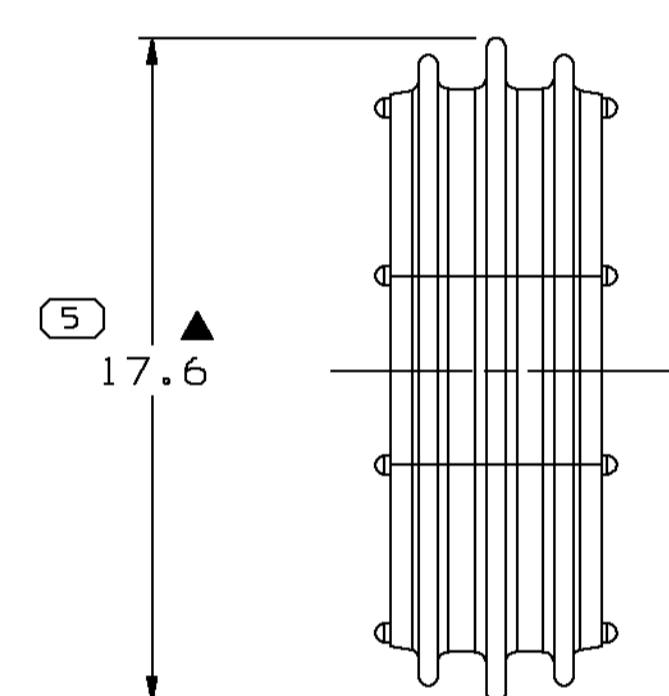
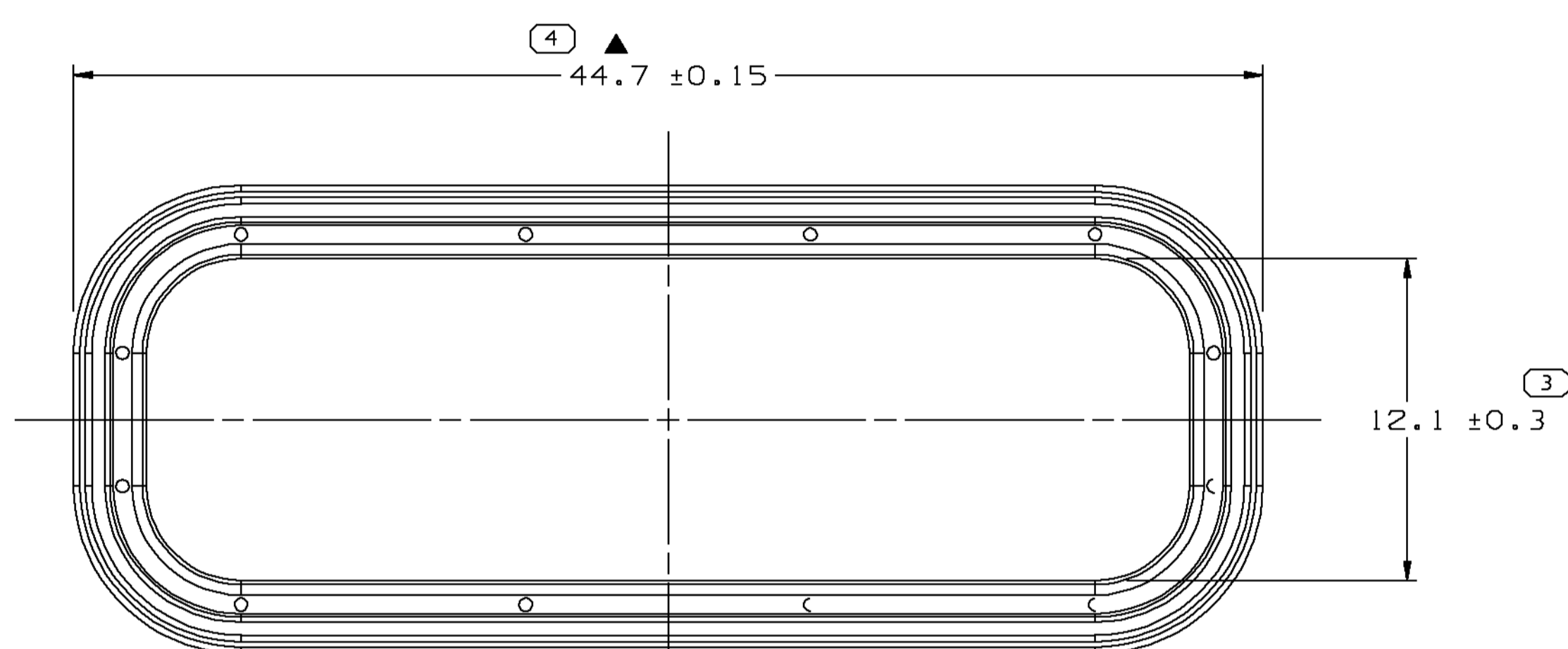
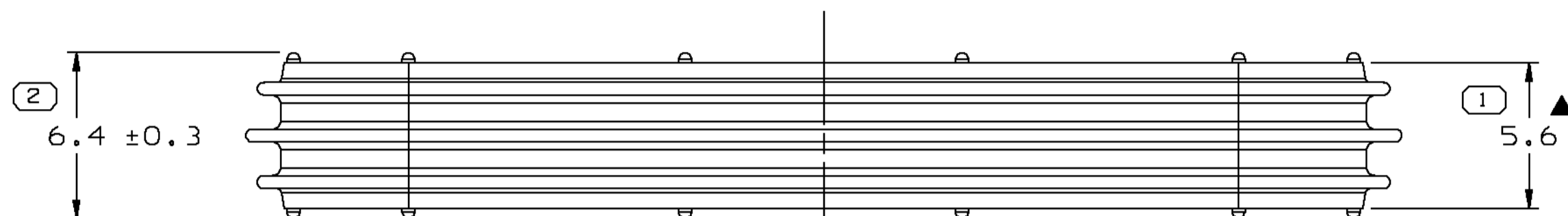

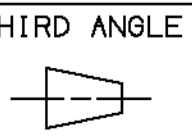


SYMBOL DEFINITION		
A DIMENSION WITHOUT AN INSPECTION REPORT SYMBOL  DOES NOT REQUIRE INSPECTION. IT MAY BE CONTROLLED ON THE INDIVIDUAL COMPONENT DRAWING.	TOTAL NO OF INSPECTIONS REQUIRED	5
	LAST NO. USED	5

MISSING SYMBOLS					DWG STATUS			ZONE	REVISION HISTORY			AUTH	DR	CK	APVD
DATE	STG	REV	CHG	N/P	DATE	STG	REV	CHG	N/P	ZONE	DATE	STG	REV	CHG	N/P
15MR01	R	001	-	A3											



- NOTES:
- UNLESS OTHERWISE SPECIFIED AND/OR INDICATED: DIMENSIONS ARE TO FACE OF VIEW SHOWN AND AUTOMATICALLY ROUNDED BY COMPUTER FOR INSPECTION. (SEE MATH MODEL FOR PRECISE DIMENSION) FOR ALL OTHER DIMENSIONS NOT SHOWN BUT REQUIRED FOR TOOL BUILD, SEE MATH MODEL FOR PRECISE TOOL PATH DATA.
 - MATING COMPONENTS: CONNECTOR 15326056 OR EQUIVALENT.
 - THIS PART IS CONTROLLED FOR AUTOMATIC FEEDING AS DENOTED ON DRAWING WITH ▲.

DELPHI Automotive Systems			
MATERIAL SPEC R0070017 SIL RED DK OR EQUIVALENT *			
SUBSTANCES OF CONCERN AND RECYCLED CONTENT PER DELPHI-A 10949001			
PART DRAWING			DISTR CODE D
CODE NUMBER 6901	DWG DATE 05MY97	SCALE 5:1	
QC SPEC	STYLE	VOLUME cm ³ 0.850	
PART GEOMETRY 3D SOLID	UNLESS OTHERWISE SPECIFIED: THIS DOCUMENT IS IN ACCORDANCE WITH ASME Y14.5M - 1994 AS AMENDED BY THE GM GLOBAL DIMENSIONING AND TOLERANCING ADDENDUM - 1997. ALL GEOMETRIC TOLERANCES AND RELATED DATUMS APPLY RFS. RULE #1 (PERFECT FORM AT MMC) DOES NOT APPLY WHEN RELATIONSHIP BETWEEN FEATURES IS ESTABLISHED BY ORIENTATION OR LOCATION TOLERANCES. SEPARATE POSITION CALLOUTS MAY BE GAGED SEPARATELY REGARDLESS OF DATUM REFERENCES.		
 CHANGE RESTRICTED NO MANUAL CHANGES	REFERENCE	DR	DATE
COPY OF MATH DATA DO NOT SCALE		APVD1 E. LUQUENO	05MY97
		APVD2 J VAZQUEZ S	05MY97
		APVD3 L. LOPEZ	09MY97
		APVD4	
		APVD5	
METRIC UNLESS OTHERWISE SPECIFIED, ALL DIMENSIONS ARE IN MILLIMETERS	DRAWING NAME SEAL CONN GT 16F		
THIRD ANGLE PROJECTION 			
SHEET NUMBER 1 OF 1	DRAWING NUMBER 15326060		DWG STATUS STG REV N/P R 001 A3
		SIZE A1	

PROCESS SENSITIVE DIMENSION		DIMENSIONAL RANGE (MM)											CHART E1
FROM	TO	0	> 20	> 30	> 70	> 100	> 150	> 200	> 250	> 300	> 400		
TOLERANCE UNLESS OTHERWISE SPECIFIED													
±0.15 ±0.2 ±0.3 ±0.4 ±0.5 ±0.6 ±0.8 ±1 ±1.2													
ANGULAR TOLERANCE ± 2°													

