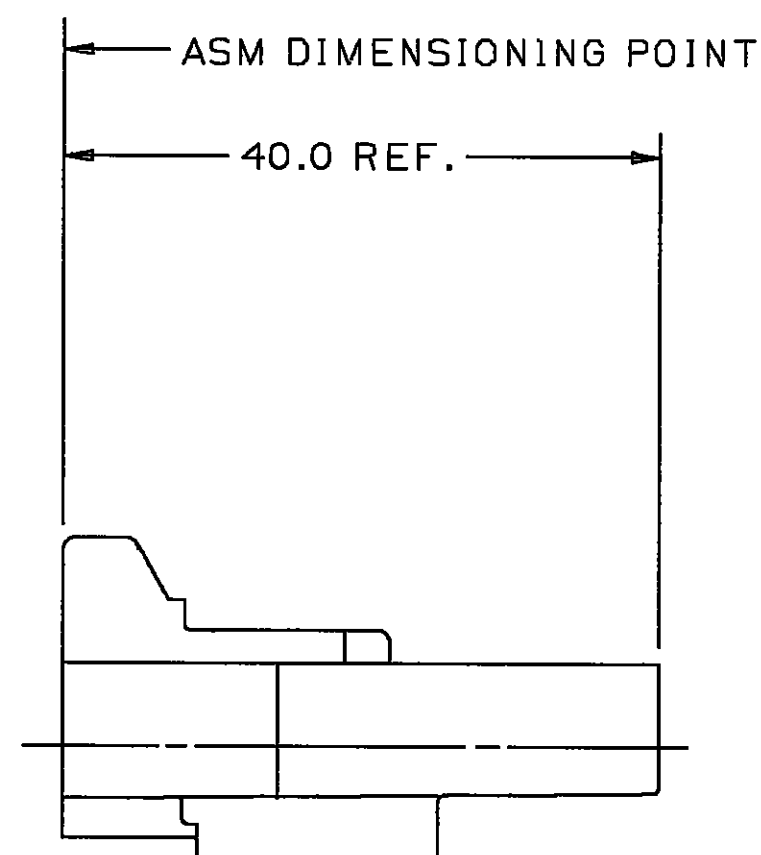
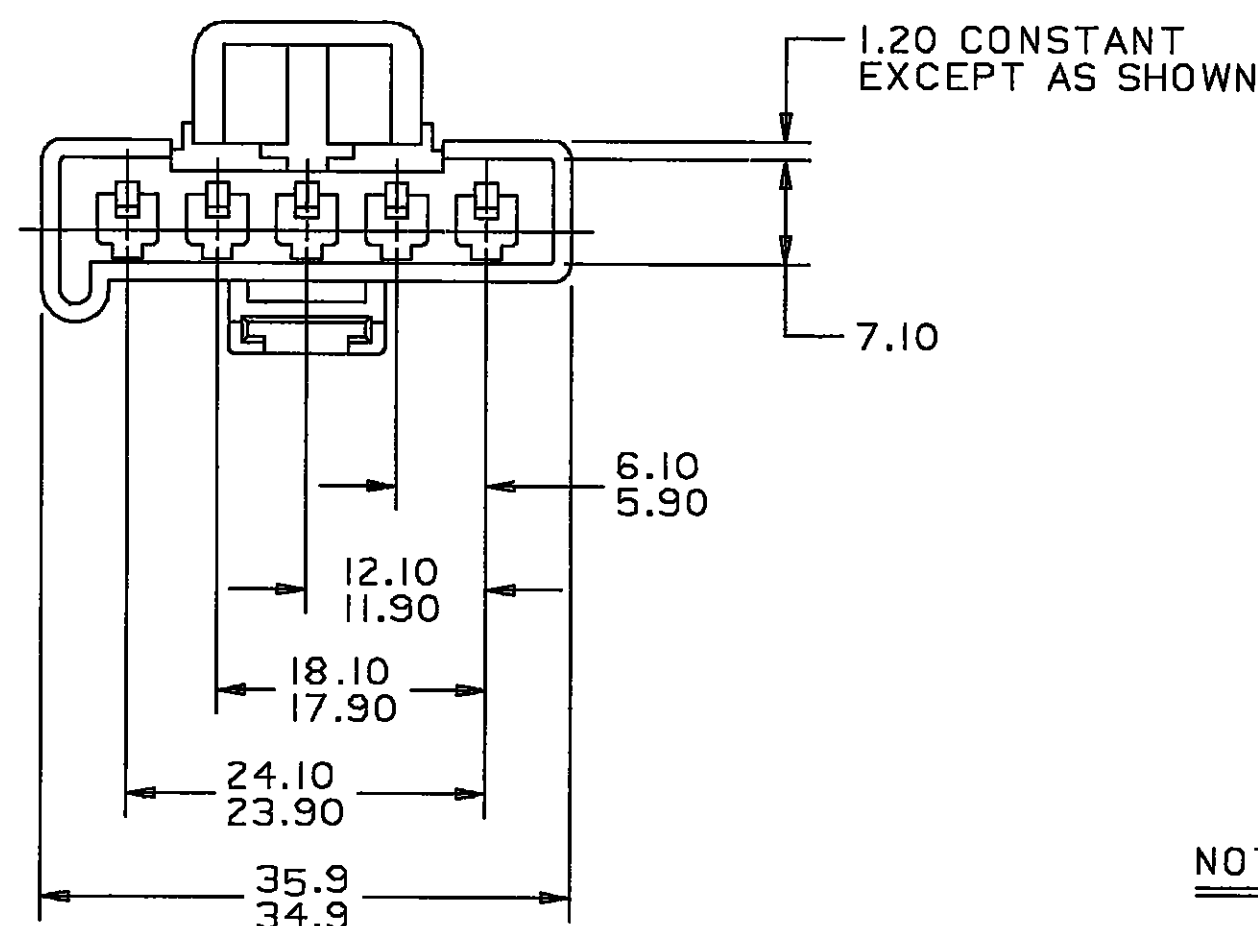


THIS DRAWING AND DESIGN HEREON CON-
STITUTES A PROPRIETARY DESIGN OF
PACKARD ELECTRIC DIVISION AND IS NOT
TO BE DUPLICATED OR REPRODUCED WITH-
OUT AUTHORITY OF PACKARD ELECTRIC
DIVISION



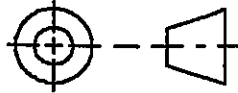
1. MATING CONNECTOR IS I2045801.
2. USE TERMINAL I2034047 OR EQUIVALENT.
3. THIS CONNECTOR TO ACCEPT SECONDARY LOCK I2045805 OR EQUIVALENT.
4. MATERIAL RECYCLING CODE >PA66< PER SAE J1344. (2.3)X(0.1) RAISED CHARACTERS AS SHOWN TO BE LOCATED ON ANY EXTERIOR SURFACE. OPTIONAL CONSTRUCTION TO BE NO MATERIAL RECYCLING CODE.
5. (2.3)X(0.1) RAISED DELPHI CORPORATE BRAND TO BE LOCATED ON ANY EXTERIOR SURFACE, PREFERABLY VISIBLE AT FINAL ASSEMBLY. OPTIONAL CONSTRUCTION TO BE "PED" OR NO LOGO.

[illegible]

DRAWING NO.

1204 5803

C06D2231

<h1>METRIC</h1> <p>DIMENSIONS ARE IN MILLIMETERS UNLESS OTHERWISE SPECIFIED</p>		<p>THIRD ANGLE PROJECTION</p> 	
<p>CODE NO. 6900</p>		<p>TOLERANCE UNLESS OTHERWISE SPECIFIED</p>	
<p>QC</p>		<p>DECIMAL : ANGULAR $\pm 2^\circ$ ONE PLACE ± 0.2 TWO PLACE ± 0.10</p>	
<p>DWG. DATE 310C84</p>	<p>SCALE NONE</p>	<p>DR. R.L.PETERSON 310C84</p>	
<p>CD.C.MP.M.5.I2045803.0D</p>		<p>CK. D.J.JORDAN</p>	<p>DATE 240C84</p>
<p>REFERENCE NO. I2045803 'E' SIZE</p>		<p>APPR. C.E.FOWLER</p>	<p>DATE 03DE84</p>
<p>MATERIAL SPEC. M3592001 - PA66 HS IM BLK</p>		<p>APPR. J.DAUGHERTY</p>	<p>DATE 03DE84</p>
<p>NAME CONN 5M M/P 280</p>			
<p>PART NO. 1204 5803</p>			<p>SIZE C</p>
<p>OUTLINE DRAWING</p>			

PACKARD ELECTRIC

PACKARD ELECTRIC DIVISION
GENERAL MOTORS CORPORATION
WARREN, OHIO