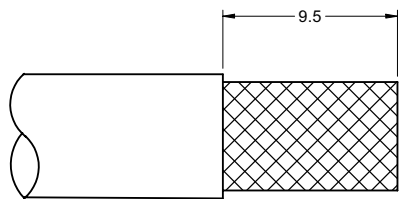
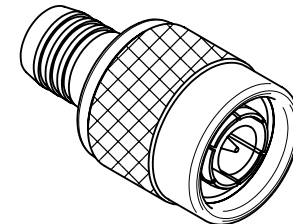
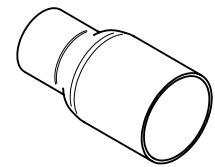
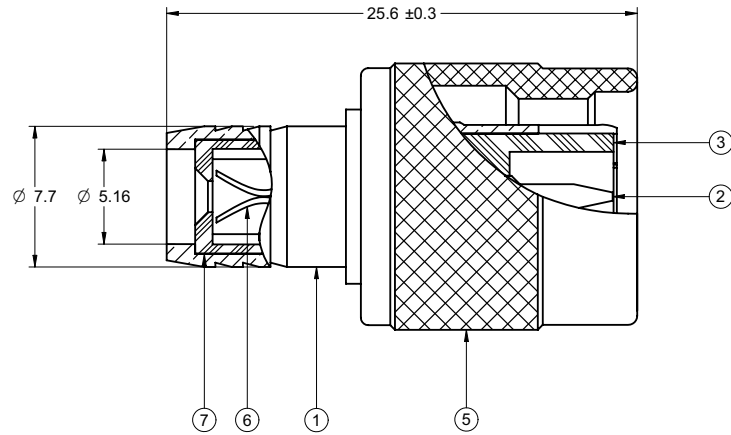
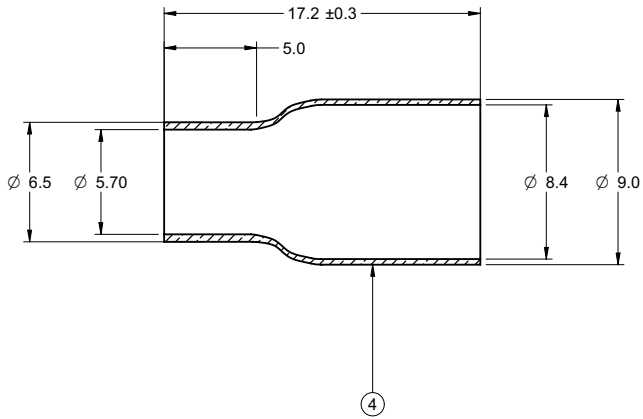


	5			4		3		2		1
PART NUMBER	ITEM ① BODY	ITEM ② CONTACT	ITEM ③ INSULATOR	ITEM ④ CRIMP SLEEVE	ITEM ⑤ CUPLING NUT	ITEM ⑥ BOTTOM CONTACT	ITEM ⑦ BOTTOM INSULATOR			
27-9078	BRASS NICKEL PLATED	BRASS Ni/Au PLATED	TPX	BRASS NICKEL PLATED	ZINC NICKEL PLATED	BERYLLIUM COPPER Ni/Au PLATED	TPX			

DRAWING NO.  
**27-9078**

REVISIONS				
RELEASE FOR QUOTATION				
A	02-20-06	L	V	T
<small>Thomas 2006.04.22 15:23:31 +08'00"</small>				



**CABLE STRIP DIMENSIONS**  
ASSEMBLY INSTRUCTIONS ON SHEET 2

**NOTES:**

**1. ELECTRICAL SPECIFICATIONS**

IMPEDANCE: 50 OHMS NOMINAL  
 FREQUENCY RANGE: 0-11 GHz  
 WORKING VOLTAGE: 500 VOLTS RMS AT SEA LEVEL  
 DIELECTRIC WITHSTANDING VOLTAGE: 1500 VOLTS RMS AT SEA LEVEL  
 CORONA LEVEL: 375 VOLTS MIN AT 70,000 FEET  
 CONTACT RESISTANCE: OUTER-0.2 MILLIOHMS MAX  
 CENTER-2.1 MILLIOHMS MAX  
 INSULATION RESISTANCE: 5000 MEGOHMS MIN

**2. MECHANICAL SPECIFICATIONS**

DURABILITY: 500 CYCLES MIN  
 CABLE RETENTION: 20lbs., RG-58 AU CABLE

**3. ENVIRONMENTAL SPECIFICATIONS**


RECOMMENDED TEMPERATURE RANGE: -55 °C TO +85°C  
 MOISTURE RESISTANCE: MIL-STD-202

THIS DRAWING TO BE INTERPRETED  
PER ANSI Y 14.5M - 1994

**COMPANY CONFIDENTIAL**

<b>受控 CONTROLLED DOCUMENT</b>					
编号 P/N	27-9078	版本 Rev	0A	日期 Rel'd Date	Mar 24, 08

TOLERANCE UNLESS OTHERWISE SPECIFIED		DRAWN BY LINDA	DATE 02-20-06
DECIMALS	mm	CHECKED BY BETTY.YU	DATE 02-20-06
X	± 0.5	APPROVED BY THOMAS	DATE 02-26-06
X.X	± 0.2	U/M	mm
X.XX	± 0.05		
ANGLES	± 0.5°		

 <b>cinch</b> <small>CONNECTIVITY SOLUTIONS</small> <small>a bel group</small>	
TITLE <b>TNC 2 PC RG58</b>	
SHEET 1 OF 2	DRAWING NO. <b>27-9078</b>
SIZE <b>C</b>	

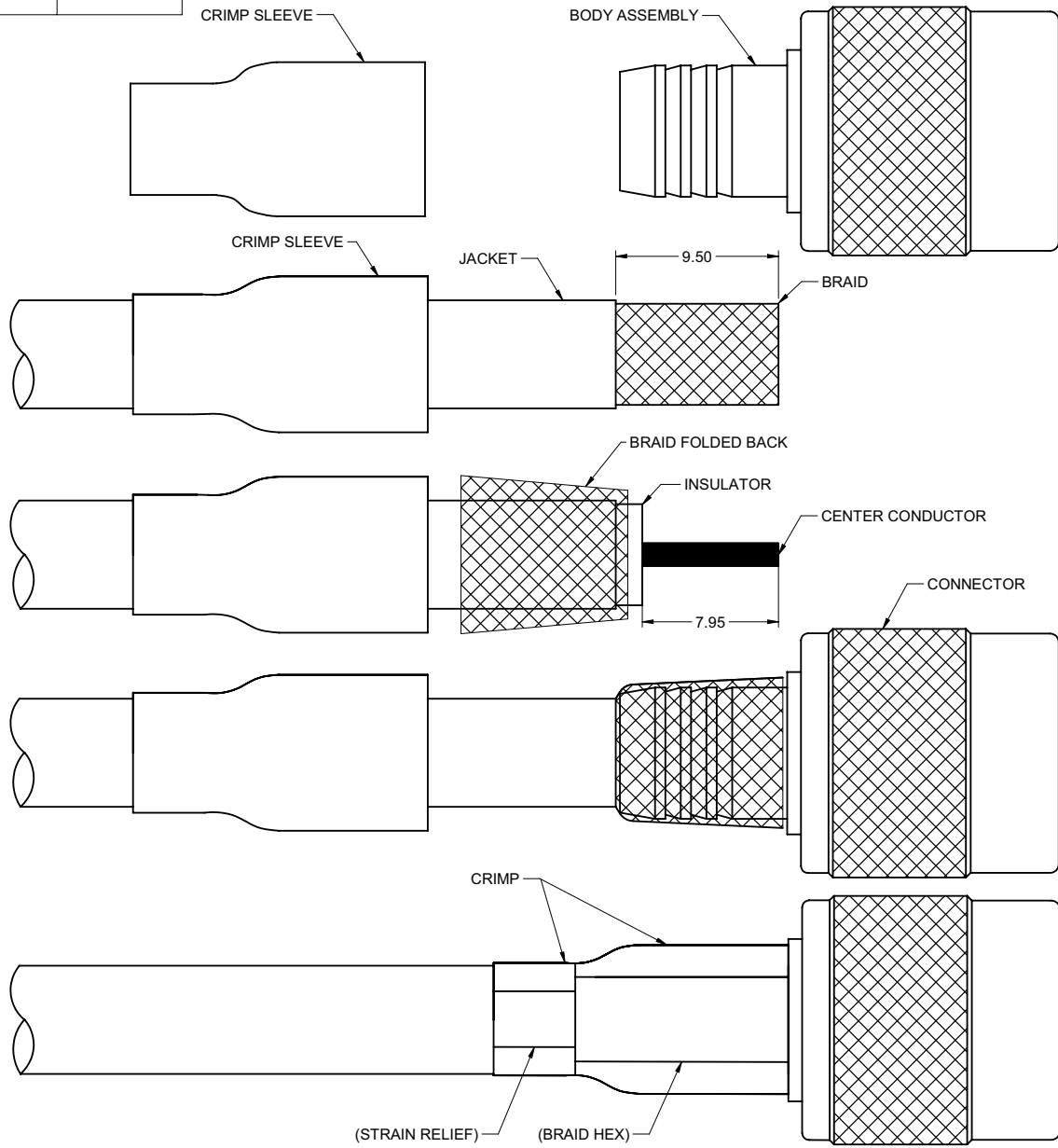
THIS DRAWING WAS PRODUCED BY COMPUTER,  
DO NOT SCALE DRAWING OR UPDATE MANUALLY.

5	4	3	2	1
PART NUMBER	CABLE	CRIMP BRAID HEX SIZE	CRIMP (STRAIN RELIEF)	RECOMMENDED CRIMP TOOL
27-9078	RG58	8.13	5.36	24-9858P

DRAWING NO. 27-9078				
REVISIONS				
RELEASE FOR QUOTATION				
A	02-20-06	L	Y	T

**ASSEMBLY INSTRUCTIONS**

1. IDENTIFY CONNECTOR PARTS. (2 PIECE PARTS.)
2. SLIDE CRIMP SLEEVE OVER CABLE AND STRIP CABLE JACKET TO DIMENSION SHOWN, DO NOT NICK BRAID OR CENTER CONDUCTOR DURING STRIP OPERATIONS.
3. FLAIR BRAID AND FOLD BACK. STRIP CABLE INSULATION TO DIMENSION SHOWN, DO NOT NICK CENTER CONDUCTOR.
4. INSERT CENTER CONDUCTOR INTO THE GUIDE HOLE FOUND IN THE REAR OF THE CONNECTOR BODY, TWIST THE BODY ONTO THE CENTER CONDUCTOR UNTIL THE CABLE INSULATION BUTTS UP TO THE BODY.
5. ARRANGE BRAID UNIFORMLY AROUND CRIMP STEM, SLIDE CRIMP SLEEVE OVER BRAID AND CRIMP SECURELY USING RECOMMENDED CRIMP TOOL.




THIS DRAWING TO BE INTERPRETED PER ANSI Y 14.5M - 1994

**COMPANY CONFIDENTIAL**

受控 CONTROLLED DOCUMENT					
编号 P/N	27-9078	版本 Rev	0A	日期 Rel'd Date	Mar 24, 08

TOLERANCE UNLESS OTHERWISE SPECIFIED		DRAWN BY LINDA	DATE 02-20-06
DECIMALS	mm	CHECKED BY BETTY.YU	DATE 02-20-06
X	+ 0.5	APPROVED BY THOMAS	DATE 02-26-06
X.X	+ 0.2	U/M	mm
X.XX	+ 0.05		
ANGLES	+ 0.5°		

 cinch CONNECTIVITY SOLUTIONS a bel group	
TITLE TNC 2 PC RG58	
SHEET 2 OF 2	DRAWING NO. 27-9078
SIZE C	

THIS DRAWING WAS PRODUCED BY COMPUTER, DO NOT SCALE DRAWING OR UPDATE MANUALLY.