

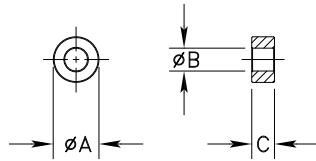
NOTES:

1 - BURNISH TO BREAK SHARP EDGES.

SIZE	PART NO.	REV.
B	5975002501	1

04/01/2013

UNCONTROLLED COPY WHEN PRINTED



A	B	C
9.30/9.70	4.60/4.90	4.65/4.90
.374	.187	.188

ELECTRICAL SPECIFICATIONS

$Sl/A(mm^{-1})$	$l_e (mm)$	$A_e (mm^2)$	$V_e (mm^3)$	$L_o (nH)$	$AL (nH)$ @ 10 kHz <10gauss	$\tan d/m_i$ @ 100 kHz <1gauss
1.8910	20.7	11.0	227	0.665	3300±20%	≤20X10E-6

BOLD NUMBERS ARE IN MILLIMETERS\*\*, LIGHT NUMBERS ARE IN INCHES.

1	B-3492	ADDED LOSS FACTOR SPECIFICATION	D.S.	01-02-03
REV.	ECN	DESCRIPTION	DRFT	DATE
REVISIONS				
APPLICABLE SPECS	DRAWING CLASS	<b>FAIR-RITE PRODUCTS CORP.</b>		
Tolerances Unless Otherwise Indicated	MATERIAL	TOROID		
	FR# 75	DRAWN BY S. ZAMONSKY	DATE 09-24-1999	REV.
2PL 3PL FRACT ANGLE	FINISH	SIZE	PART NO.	REV.
		B	5975002501	0
	APPRVD BY	SCALE	NONE	SHEET 1 of 1