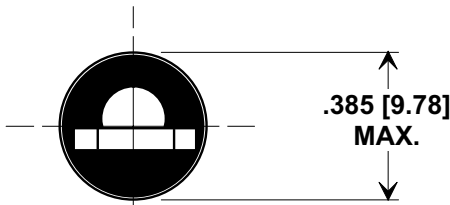
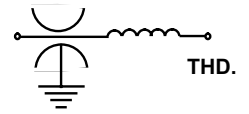
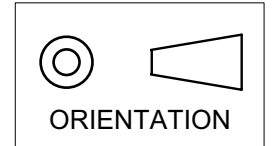


MARKETING SALES DRAWING

DIMENSIONS IN INCHES - DO NOT SCALE THIS DRAWING
DIMENSIONS IN METRIC - []

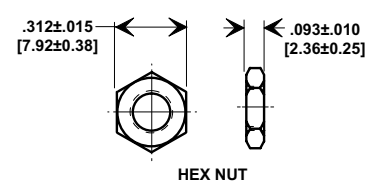
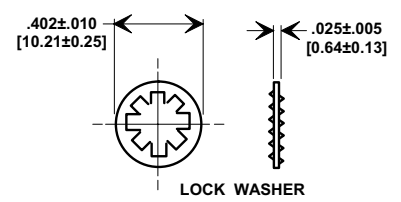
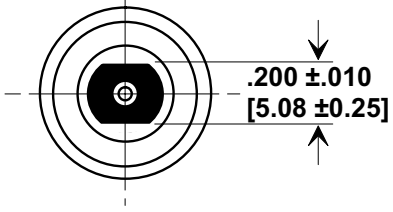
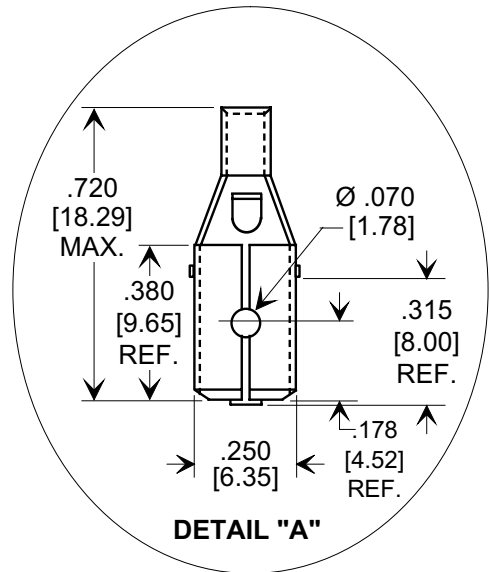
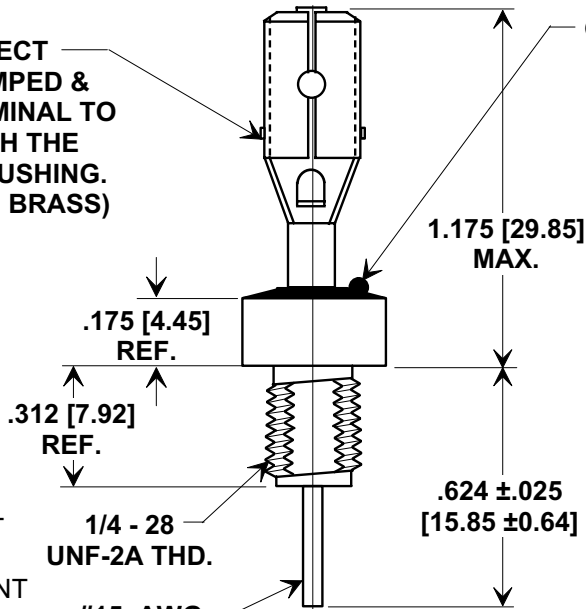
This drawing is the property of Tusonix, Inc., and may not be used, reproduced, published or disclosed to others without expressed authorization by Tusonix Inc.

Electrical Testing
 per Tusonix standard
 test plans and Mil-Std-202
 Test Methods.



**QUICK DISCONNECT
 TERMINAL - CRIMPED &
 SOLDERED. TERMINAL TO
 BE ALIGNED WITH THE
 FLATS OF THE BUSHING.
 (NICKEL PLATED BRASS)**

**GREEN INK DOT IDENTIFIER
 RoHS PART ONLY**



NOTES:

- TUSONIX STANDARD PART NUMBER: 4600-072. TUSONIX RoHS COMPLIANT PART NUMBER: 4600-072 LF. CUSTOMER MUST SPECIFY STANDARD OR RoHS PART NUMBER WHEN ORDERING.
- MATERIALS:
 BUSHING - TIN PLATED STEEL.
 LEAD STANDARD PART;
 SOLDER PLATED COPPER.
 RoHS PART; SILVER PLATED COPPER.
 NUT - TIN PLATED BRASS.
 L"WASHER - TIN PLATED PHOSPHOR BRONZE.
- PART MARKING: STANDARD PART: NONE.
 RoHS PART: GREEN INK DOT ON EPOXY. LOCATION GENERAL.
- MOUNTING TORQUE: 8 lb - ins. max.
- DCR - .01Ω max.
- MAX. SOLDER TEMPERATURE 500°F.
- ONE ADDITIONAL MALE TAB TO BE SUPPLIED, BULK PACKAGED WITH LOCK WASHER AND HEX NUT.

MIN. Cx (μF)	WVDC		CURRENT DC	I.R. MIN. @ 100 (VDC)	DWV (VDC)	MIN. NO LOAD INSERTION LOSS (dB) PER MIL-STD 220 @ +25°C					TEMP. CHANGE	
	85°C	125°C				30 KHz	100 KHz	300 KHz	1 MHz	10 MHz		1GHz
.15	280	200 DC 125 AC	20 A	1 G Ω	500	----	7	15	25	40	60	X7R

REVISION RECORD Original Release C.O. 20061212-7-01	0	--TOLERANCES-- Unless Otherwise Specified	Title	
	COAXIAL BROADBAND - "L"			
	DECIMAL ±		Drawn L.E. 12-13-06 Scale 2 X	
	ANGLES ±		Approved B.L. 12-13-06	
TUSONIX TUCSON, ARIZONA		A	4600-072	

X-2015 Rev-0