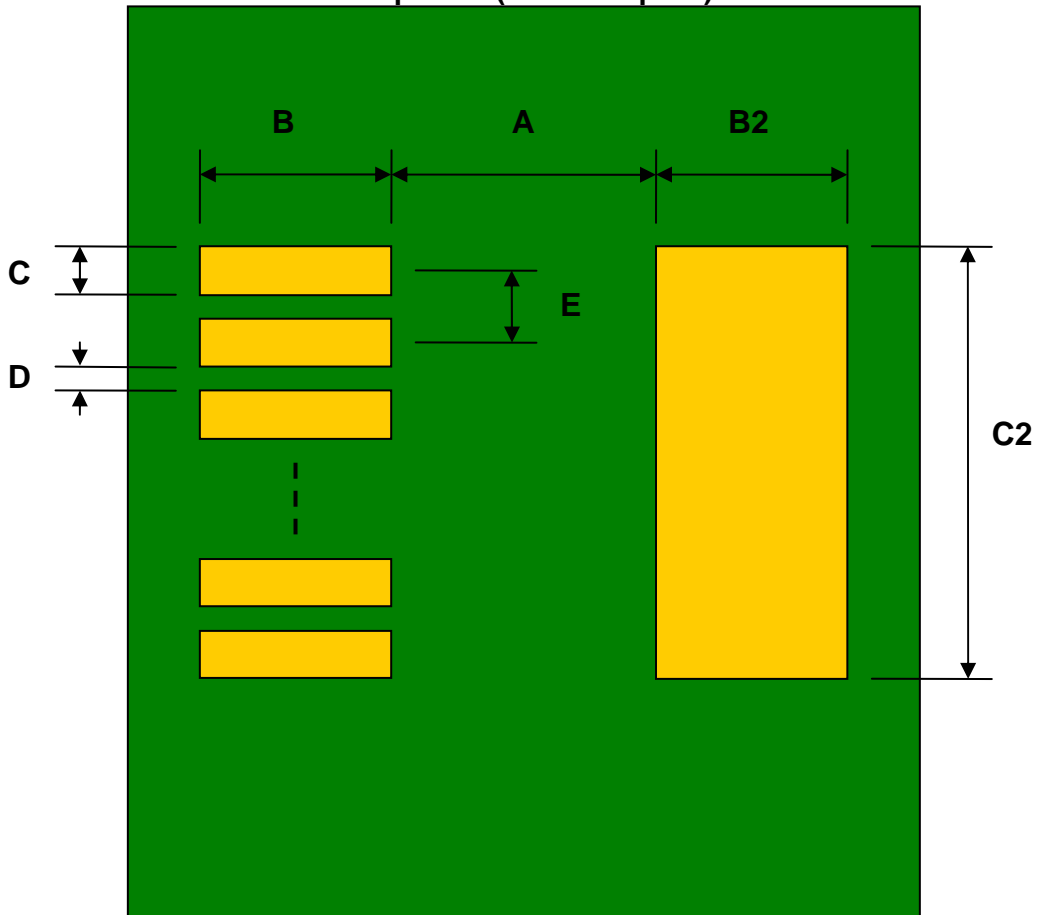


## SOT-223-4 to DIP-6 SMT Adapter (2.3 mm pitch, 3.56 x 6.50 mm body)

REF.	DIMENSIONS					
	mm			inches		
	MIN.	TYP.	MAX.	MIN.	TYP.	MAX.
A		4.80				
B		2.00				
C		1.00				
B2		2.00				
C2		3.30				
D		1.30				
E		2.30				
F					0.300	
G					0.100	
H					0.025	

Top View (SMT Footprint)



(Representative drawing only - not to scale)

### Bottom View (DIP Pins)



(Representative drawing only - not to scale)

### Side View (DIP Pins)



(Representative drawing only - not to scale)

# Mouser Electronics

Authorized Distributor

Click to View Pricing, Inventory, Delivery & Lifecycle Information:

[Chip Quik:](#)

[PA0174](#)