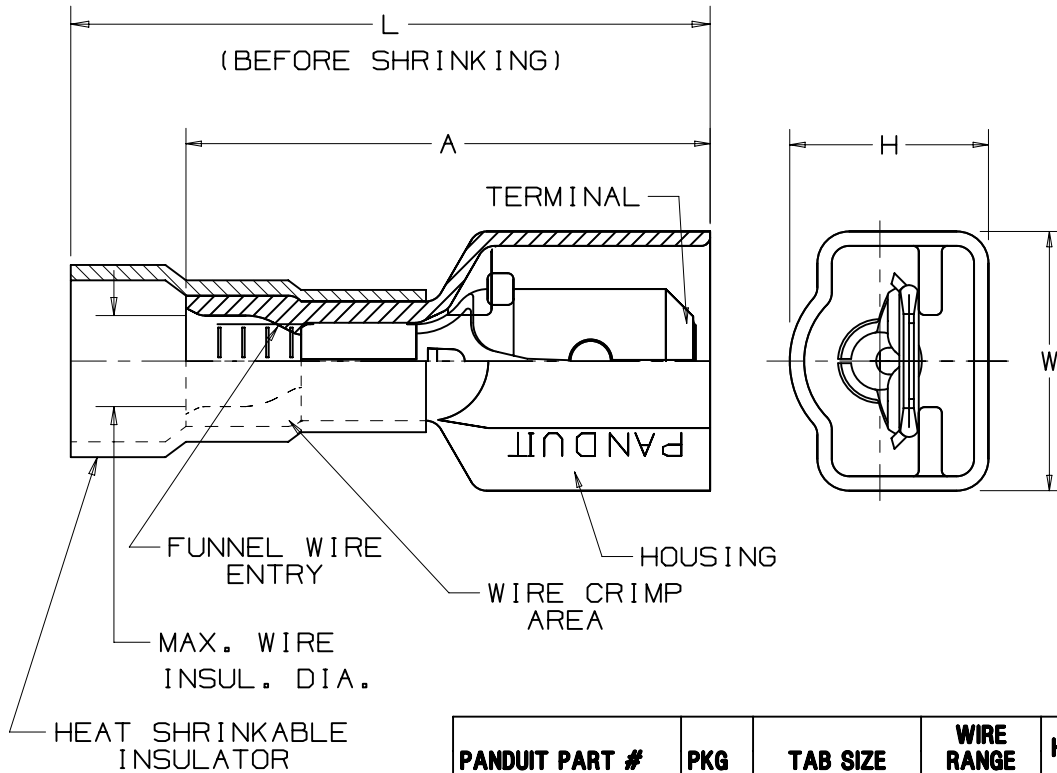


THIS COPY IS PROVIDED ON A RESTRICTED BASIS AND IS NOT TO BE USED IN ANY WAY DETRIMENTAL TO THE INTERESTS OF PANDUIT CORP.



NOTES:

1. FOR USE WITH STRANDED COPPER WIRE ONLY
(SEE TABLE FOR WIRE RANGE)
2. MATERIAL:
 - A. TERMINAL - CDA 260 BRASS, NICKEL PLATED
 - B. HOUSING - TYPE 66 NYLON
 - C. INSULATOR - HEAT SHRINKABLE POLYOLEFIN WITH HOT MELT SEALANT
3. MINIMUM SHRINK TEMPERATURE: 300°F (150°C)
4. ALL DIMENSIONS SHOWN ARE NOMINAL. DIMENSIONS IN BRACKETS ARE IN MILLIMETERS.
5. INSTALLATION TOOL: CT-310
6. PACKAGING QTY:
 - A. STD PKG -Q = 25
 - B. BULK PKG. -D = 500
7. WIRE STRIP LENGTH: $9/32'' + 1/32'' [7.1 + 0.8]$
 $- 0 \quad - 0$

PANDUIT PART #	PKG	TAB SIZE	WIRE RANGE AWG	HOUSING COLOR	MAX. INSUL. DIA.	DIMENSIONS			
						A	W	H	L
DNH18-250FIM	-Q	.250 X .032 [6,35 X 0,81]	#22-18	RED	.133 [3,38]	.90 [22,9]	.41 [10,4]	.31 [7,9]	1.50 [38,1]
DNH14-250FIM	-Q -D	.250 X .032 [6,35 X 0,81]	#16-14	BLUE	.158 [4,01]	.90 [22,9]	.41 [10,4]	.31 [7,9]	1.50 [38,1]

REV	DATE	BY	CHK	APR	DESCRIPTION	ECN
05	2-23-15	JHNU	JHNU	RGB	ADDED NOTE 7	N41457BA-DC
04	04-25-13	JBN	RTFI	RTFI	UPDATED DRAWING BORDER & TITLE BLOCK	A41457

TITLE		HEAT SHRINK FULLY INSULATED MALE DISCONNECTS	
ITEM REVISION NAME		CUSTOMER DRAWING	
DATASET FILE NAME		PANDUIT	
UNLESS OTHERWISE SPECIFIED, DIMENSIONAL TOLERANCES ARE: IN [mm]		MATERIAL:	
.x ± .1 [2.54] .xxx ± .005 [.127]		SEE NOTES	
.xx ± .01 [.25] ANGLES ± 5 °		DRAWING NUMBER:	
		A41457	
DRAWN BY	DATE	CHK	SCALE
DRL	-	LCA	NONE
SHT 1 OF 1			SIZE
			A

D10100DA/15

Mouser Electronics

Authorized Distributor

Click to View Pricing, Inventory, Delivery & Lifecycle Information:

Panduit:

[DNH14-250FIM-Q](#) [DNH18-250FIM-Q](#)