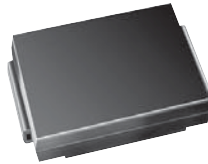


## Surface Mount Schottky Barrier Rectifier



DO-214AB (SMC)

### FEATURES

- Low profile package
- Ideal for automated placement
- Guardring for overvoltage protection
- Low power losses, high efficiency
- Very low forward voltage drop
- High surge capability
- Meets MSL level 1, per J-STD-020C, LF max peak of 260 °C
- Solder Dip 260 °C, 40 seconds
- Component in accordance to RoHS 2002/95/EC and WEEE 2002/96/EC



### MAJOR RATINGS AND CHARACTERISTICS

$I_{F(AV)}$	4.0 A
$V_{RRM}$	20 V to 40 V
$I_{FSM}$	150 A
$V_F$	0.31 V, 0.35 V
$T_j$ max.	125 °C

### TYPICAL APPLICATIONS

For use in low voltage high frequency inverters, free-wheeling, dc-to-dc converters, and polarity protection applications.

### MECHANICAL DATA

**Case:** DO-214AB (SMC)

Epoxy meets UL 94V-0 flammability rating

**Terminals:** Matte tin plated leads, solderable per J-STD-002B and JESD22-B102D

E3 suffix for commercial grade, HE3 suffix for high reliability grade (AEC Q101 qualified)

**Polarity:** Color band denotes the cathode end

### MAXIMUM RATINGS ( $T_A = 25\text{ °C}$ unless otherwise noted)

PARAMETER	SYMBOL	SL42	SL43	SL44	UNIT
Device marking code		SL2	SL3	SL4	
Maximum repetitive peak reverse voltage	$V_{RRM}$	20	30	40	V
Maximum RMS voltage	$V_{RMS}$	14	21	28	V
Maximum DC blocking voltage	$V_{DC}$	20	30	40	V
Maximum average forward rectified current <sup>(1)</sup> at $T_L$ (see Fig. 1)	$I_{F(AV)}$	4.0 8.0			A
Peak forward surge current 8.3 ms single half sine-wave superimposed on rated load	$I_{FSM}$	150			A
Operating junction temperature range	$T_J$	- 55 to + 125			°C
Storage temperature range	$T_{STG}$	- 55 to + 150			°C

**Note:**

(1) P.C.B. mounted 0.55 x 0.55" (14 x 14 mm) copper pad areas,  $T_L = 90\text{ °C}$

<b>ELECTRICAL CHARACTERISTICS</b> ( $T_A = 25\text{ }^\circ\text{C}$ unless otherwise noted)						
PARAMETER	TEST CONDITIONS	SYMBOL	SL42	SL43	SL44	UNIT
Maximum instantaneous forward voltage at <sup>(1)</sup>	$I_F = 4.0\text{ A}$ , $T_A = 125\text{ }^\circ\text{C}$	$V_F$	0.31		0.35	V
	$I_F = 4.0\text{ A}$ , $T_A = 25\text{ }^\circ\text{C}$		0.42		0.44	
	$I_F = 8.0\text{ A}$ , $T_A = 125\text{ }^\circ\text{C}$		0.37		0.41	
	$I_F = 8.0\text{ A}$ , $T_A = 25\text{ }^\circ\text{C}$		0.47		0.50	
Maximum DC reverse current at rated DC blocking voltage <sup>(1)</sup>	$T_A = 25\text{ }^\circ\text{C}$ $T_A = 100\text{ }^\circ\text{C}$	$I_R$	0.5 35			mA

**Note:**

(1) Pulse test: 300  $\mu\text{s}$  pulse width, 1 % duty cycle

<b>THERMAL CHARACTERISTICS</b> ( $T_A = 25\text{ }^\circ\text{C}$ unless otherwise noted)					
PARAMETER	SYMBOL	SL42	SL43	SL44	UNIT
Typical thermal resistance <sup>(1)</sup>	$R_{\theta JA}$	50			$^\circ\text{C/W}$
	$R_{\theta JL}$	14			

**Note:**

(1) P.C.B. mounted 0.55 x 0.55" (14 x 14 mm) copper pad areas,  $T_L = 90\text{ }^\circ\text{C}$

<b>ORDERING INFORMATION</b> (Example)					
PREFERRED P/N	UNIT WEIGHT (g)	PREFERRED PACKAGE CODE	BASE QUANTITY	DELIVERY MODE	
SL43-E3/57T	0.235	57T	850	7" Diameter Plastic Tape & Reel	
SL43-E3/9AT	0.235	9AT	3500	13" Diameter Plastic Tape & Reel	
SL43HE3/57T <sup>(1)</sup>	0.235	57T	850	7" Diameter Plastic Tape & Reel	
SL43HE3/9AT <sup>(1)</sup>	0.235	9AT	3500	13" Diameter Plastic Tape & Reel	

**Note:**

(1) Automotive grade AEC Q101 qualified

## RATINGS AND CHARACTERISTICS CURVES

( $T_A = 25\text{ }^\circ\text{C}$  unless otherwise noted)

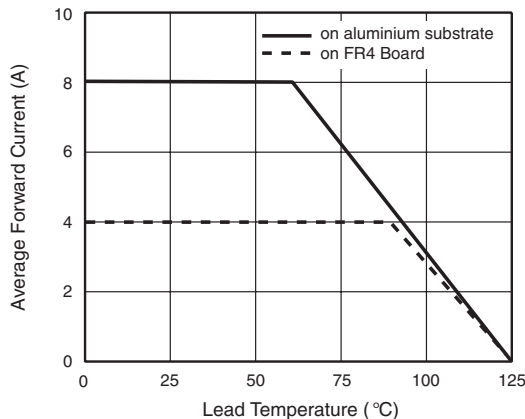


Figure 1. Forward Current Derating Curve

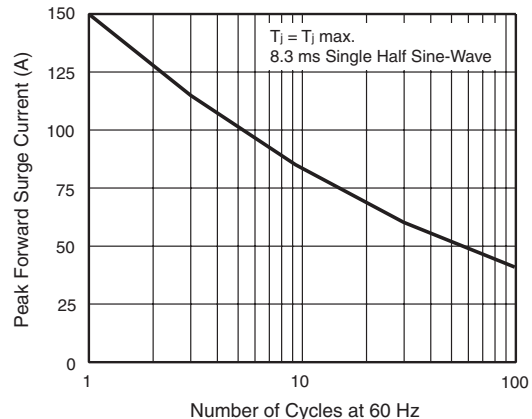


Figure 2. Maximum Non-Repetitive Peak Forward Surge Current

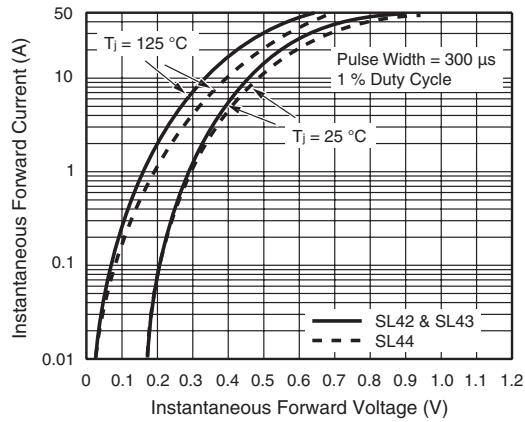


Figure 3. Typical Instantaneous Forward Characteristics

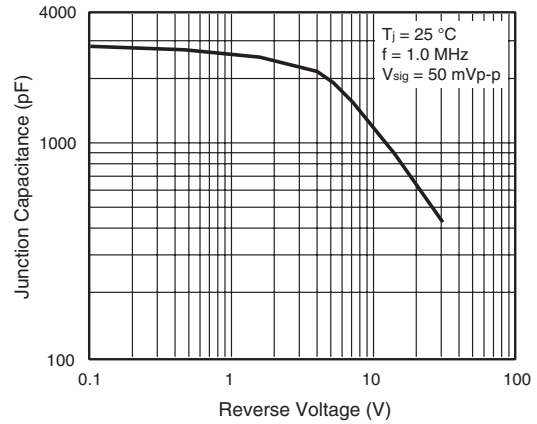


Figure 5. Typical Junction Capacitance

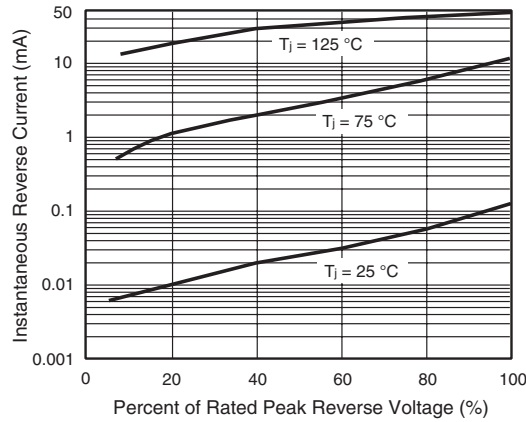
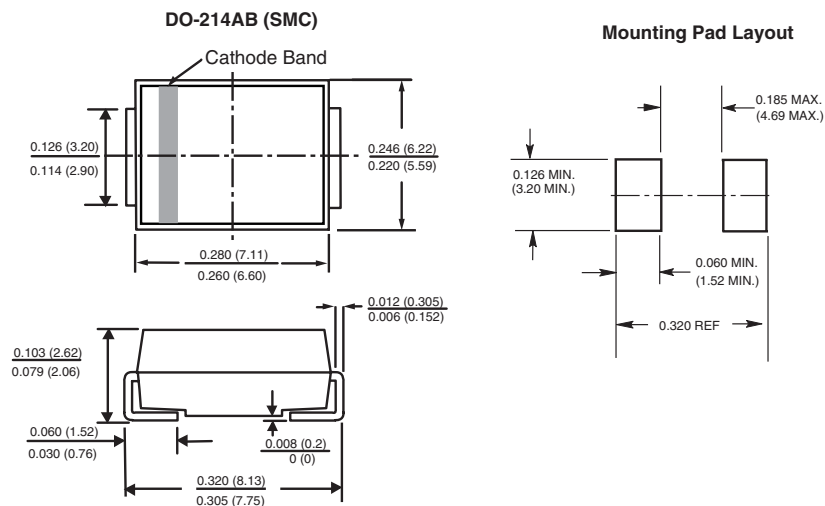


Figure 4. Typical Reverse Characteristics

### PACKAGE OUTLINE DIMENSIONS in inches (millimeters)





## Notice

Specifications of the products displayed herein are subject to change without notice. Vishay Intertechnology, Inc., or anyone on its behalf, assumes no responsibility or liability for any errors or inaccuracies.

Information contained herein is intended to provide a product description only. No license, express or implied, by estoppel or otherwise, to any intellectual property rights is granted by this document. Except as provided in Vishay's terms and conditions of sale for such products, Vishay assumes no liability whatsoever, and disclaims any express or implied warranty, relating to sale and/or use of Vishay products including liability or warranties relating to fitness for a particular purpose, merchantability, or infringement of any patent, copyright, or other intellectual property right.

The products shown herein are not designed for use in medical, life-saving, or life-sustaining applications. Customers using or selling these products for use in such applications do so at their own risk and agree to fully indemnify Vishay for any damages resulting from such improper use or sale.