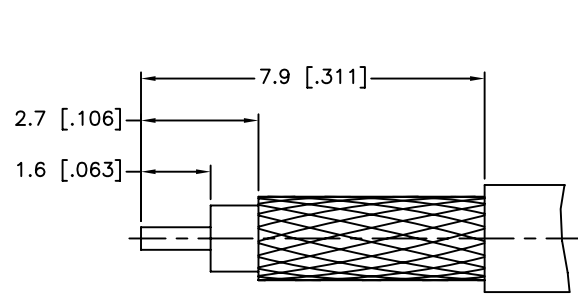
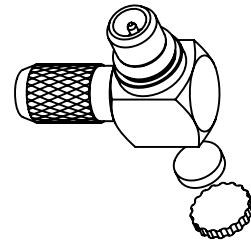
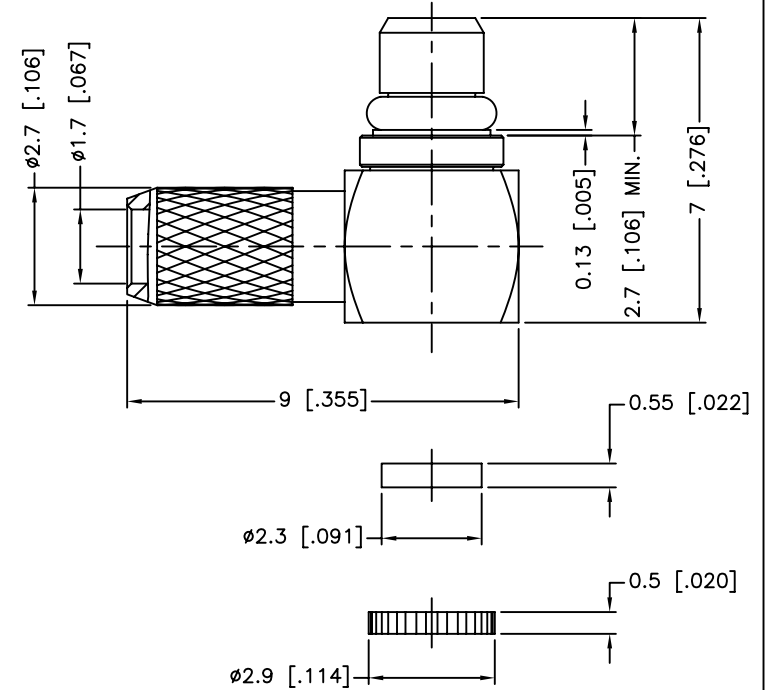
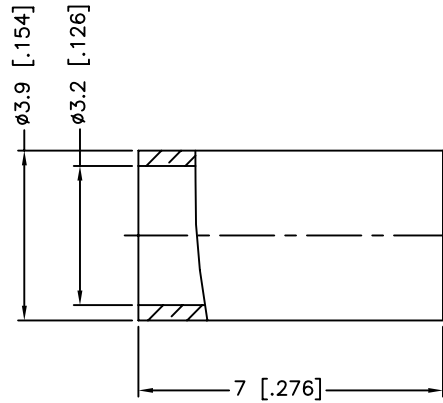


REV.	DATE	ECR NO.	DESCRIPTION
A	03/12/03	XXXXXX	UPDATE DRAWING FORMAT
B	08/30/11	2296	REVISE THE FERRULE AND INCREASE THE BARREL'S OD TO .106", ADD STEP DIMENSION



RECOMMENDED
CABLE STRIPPING DIM'S



1. IMPEDANCE: 50 OHM
2. FREQUENCY RANGE: 0-6 GHz
3. DIELECTRIC WITHSTANDING VOLTAGE: 500 VRMS. MIN.
4. DURABILITY: 500 CYCLES MIN.
5. TEMPERATURE RANGE: -65°C TO +165°C
6. CRIMP FERRULE
HEX CRIMP SIZE .128"
7. CONTACT PIN TO SOLDER

UNLESS OTHERWISE SPECIFIED DIMENSIONS ARE IN MILLIMETERS. DIMENSIONS IN [] ARE IN INCHES AND FOR CUSTOMER REFERENCE ONLY.				APPROVALS	DATE	<h1 style="color: blue; margin: 0;">Amphenol Connex</h1>	
7	FERRULE	BRASS	GOLD	1	DRAWN M.ZHANG		PART DESCRIPTION MMCX R/A CRIMP PLUG (FOR RG-174/U,188A/U,316/U CABLE)
6	COVER	BRASS	GOLD	1			
5	INSULATOR	PTFE	NATURAL	1	ISSUED		PART NO. 262103
4	RETAINER RING	BER. COPPER	GOLD	1	SHEET 1 OF 1		DWG. NO. 262103.DWG
3	CONTACT PIN	BRASS	GOLD	1	CAD FILE C:/CONNEX/262103.DWG	REV. B SIZE A SCALE NA	
2	INSULATOR	PTFE	NATURAL	1	<small>UNLESS OTHERWISE SPECIFIED TOLERANCES FOR MILLIMETERS ARE: 0.5 - 8mm ± 0.20mm 8 - 30mm ± 0.40mm 30 - 120mm ± 0.50mm</small>		
1	BODY WITH HOUSING	BRASS	GOLD	1	<small>UNLESS OTHERWISE SPECIFIED TOLERANCES FOR INCHES ARE: .020 - .315 = ± 0.007" .315 - 1.180 = ± 0.015" 1.180 - 4.724 = ± 0.020"</small>		
DESCRIPTION				MATERIAL	FINISH	QTY	DO NOT SCALE DRAWING