

KOBICONN Test Points, Terminal Strips and Terminal Blocks



TEST POINTS GLASS BEAD INSULATOR

Our PCB test point and terminals feature a large loop for easy probe attachment or to facilitate the clipping on of other components.

They are ideal for components which need frequent replacement and are also suitable for raising hot components above the surface of the PCB.

A glass bead in a choice of eight colors for identification purposes ensures a snug fit on the board. White, yellow, black, brown, blue, pink, red and green are available. Other colors available upon request.

The unique shape of the test point will not damage through-plated holes during assembly yet prevents any movement prior to soldering.

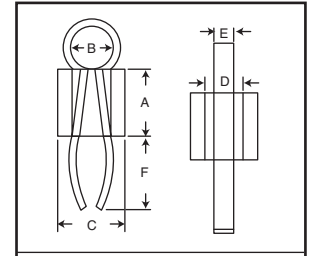
Also ideal as terminals.
 • Three sizes
 • Choice of eight colors



RoHS Compliant

DIMENSIONS: in.	
.040" Mounting Hole	.052" Mounting Hole
A= .120-.130	A= .112-.122
B= .051-.059	B= .080-.085
C= .087-.097	C= .113-.123
D= .042-.052	D= .059-.069
E= .020	E= .032
F= .109	F= .109
	F= .141*

* 3 / 32" board thickness only



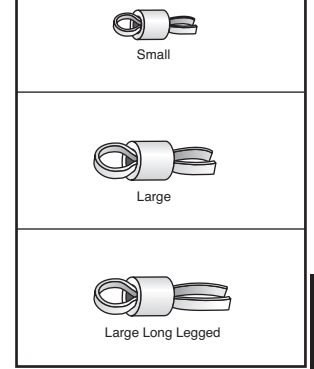
Material:
 Bead: boro silicate sintered glass
 Tag: phosphor bronze B5384 solder tinned

† Note: Coefficient of expansion is quoted for the range of 50°C to 300°C.

Price Each					
1	100	500	1000	5000	10000
.30	.198	.152	.132	.119	.107

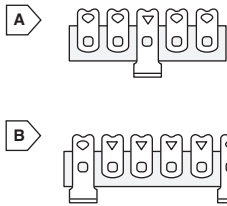
Glass Bead				
† Coeff.	Density	Viscosity Poise °C	Log (OHM. CM)	Dielectric Properties
Term. Expn x10 ⁻⁶ /°C	g/cc	14.6 13 7.6	TR. DC. Resistivity	at 1MHZ at 20°C
4.94	2.27	10 10 10	100 250°C 350°C	Const Loss Angle
		475 515 719	365 10.01 8.2	5.7 0.003

MOUSER STOCK NO.	Board Thickness (In.)	Mounting Hole (In.)	MOUSER STOCK NO.	Board Thickness (In.)	Mounting Hole (In.)	MOUSER STOCK NO.	Board Thickness (In.)	Mounting Hole (In.)	Color
151-201-RC	1/16	.040	151-101-RC	1/16	.052	151-301-RC	3/32	.052	White
151-202-RC	1/16	.040	151-102-RC	1/16	.052	151-302-RC	3/32	.052	Yellow
151-203-RC	1/16	.040	151-103-RC	1/16	.052	151-303-RC	3/32	.052	Black
151-204-RC	1/16	.040	151-104-RC	1/16	.052	151-304-RC	3/32	.052	Brown
151-205-RC	1/16	.040	151-105-RC	1/16	.052	151-305-RC	3/32	.052	Blue
151-206-RC	1/16	.040	151-106-RC	1/16	.052	151-306-RC	3/32	.052	Pink
151-207-RC	1/16	.040	151-107-RC	1/16	.052	151-307-RC	3/32	.052	Red
151-208-RC	1/16	.040	151-108-RC	1/16	.052	151-308-RC	3/32	.052	Green



TERMINAL STRIPS

- Lug: tin plated
- Strip: phenolic .375"x.062"
- Mount: for #6 screw



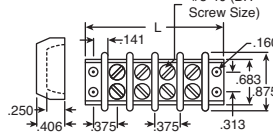
For quantities of 500 and up, call for quote.

MOUSER STOCK NO.	Fig.	Desc.	Price Each		
			1	10	100
158-1002	A	2 lugs	.38	.25	.23
158-1003	A	3 lugs	.56	.37	.34
158-1004	A	4 lugs	.68	.52	.47
158-1005	A	5 lugs	.96	.64	.58
158-1006	B	6 lugs	1.14	.76	.69
158-1007	B	7 lugs	.98	.89	.81
158-1008	B	8 lugs	1.35	1.04	.94

BARRIER TERMINAL BLOCKS

Insulator material is molded phenolic. Eyelets are nickel plated brass, screws are nickel plated steel, 10 amp rated. Universal screw head fits slotted or phillips screwdriver.

DIMENSIONS: in.



For quantities of 500 and up, call for quote.

MOUSER STOCK NO.	Term.	L	Price Each		
			1	10	100
15BB002	2	1.425	1.46	.97	.88
15BB004	4	2.175	2.35	1.81	1.65
15BB008	8	3.675	3.53	2.72	2.47
15BB010	10	5.175	4.38	3.37	3.07

FAHNESTOCK CLIPS

- Features:**
- Quick connect/disconnect
 - Wire clip
 - Battery clip
 - Terminal/connector
 - Nickel plated, spring brass



For quantities of 10,000 and up, call for quote.

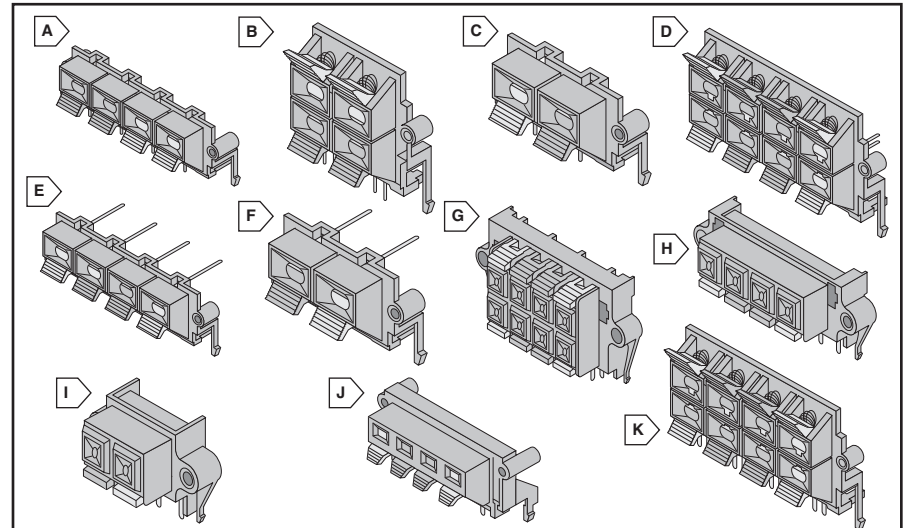
MOUSER STOCK NO.	Screw Size	W x L (In.)	Price Each		
			1	100	1000
524-11-4034C	6	5/16 x 3/4	.21	.19	.15

COMPRESSION TERMINALS

Printed circuit terminals. Ideal for speaker systems and other audio or low voltage applications. These terminal blocks firmly grasp stripped wire. Buttons are color coded black and red.

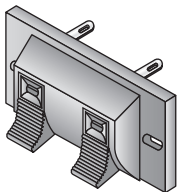


RoHS Compliant



COMPRESSION TERMINAL BLOCKS

Quick connect terminals. Ideal for speaker systems and other audio or low voltage applications. These terminal blocks firmly grasp stripped wire. Color coded (black and red)



RoHS Compliant

MOUSER STOCK NO.	Position	Price Each			
		1	10	100	500
151-R225-E	2	1.47	.98	.89	.81
151-R242-E	4	2.54	1.69	1.54	1.40

MOUSER STOCK NO.	Fig.	Position	Price Each			
			1	10	100	500
151-CJ9002-E	A	4	1.18	.91	.70	.63
151-CJ9007-E	B	4	1.18	.91	.70	.63
151-CJ9008-E	C	2	.86	.66	.51	.39
151-CJ9011-E	D	8	1.85	1.42	1.09	.93
151-CJ9012-E	E	4	1.31	1.01	.78	.60
151-CJ9018-E	F	2	.86	.66	.51	.39

MOUSER STOCK NO.	Fig.	Position	Price Each			
			1	10	100	500
151CJ9019-E	G	8	1.98	1.52	1.17	1.00
151-CJ9020-E	H	4	1.31	1.01	.78	.60
151-CJ9021-E	I	2	.86	.66	.51	.39
151-CJ9028-E	J	4	1.39	1.07	.82	.63
151-CJ9031-E	K	8	2.10	1.52	1.27	1.15